

## Product datasheet for **TA323727**

### FGFR3 Rabbit Polyclonal Antibody

#### Product data:

Product Type:	Primary Antibodies
Applications:	IHC
Recommended Dilution:	IHC: 35-150 Positive control: Human liver cancer Predicted cell location: Cytoplasm
Reactivity:	Human, Mouse
Host:	Rabbit
Isotype:	IgG
Clonality:	Polyclonal
Immunogen:	Synthetic peptide corresponding to a region derived from 30-44 amino acids of Human Fibroblast growth factor receptor 3
Formulation:	PBS pH7.3, 0.05% NaN <sub>3</sub> , 50% glycerol
Concentration:	lot specific
Purification:	Antigen affinity purification
Conjugation:	Unconjugated
Storage:	Store at -20°C as received.
Stability:	Stable for 12 months from date of receipt.
Gene Name:	fibroblast growth factor receptor 3
Database Link:	<a href="#">NP_000133</a> <a href="#">Entrez Gene 14184 Mouse</a> <a href="#">Entrez Gene 2261 Human</a> <a href="#">P22607</a>



[View online »](#)

**Background:**

This gene encodes a member of the fibroblast growth factor receptor (FGFR) family; with its amino acid sequence being highly conserved between members and among divergent species. FGFR family members differ from one another in their ligand affinities and tissue distribution. A full-length representative protein would consist of an extracellular region; composed of three immunoglobulin-like domains; a single hydrophobic membrane-spanning segment and a cytoplasmic tyrosine kinase domain. The extracellular portion of the protein interacts with fibroblast growth factors; setting in motion a cascade of downstream signals; ultimately influencing mitogenesis and differentiation. This particular family member binds acidic and basic fibroblast growth hormone and plays a role in bone development and maintenance. Mutations in this gene lead to craniosynostosis and multiple types of skeletal dysplasia. Three alternatively spliced transcript variants that encode different protein isoforms have been described.

**Synonyms:**

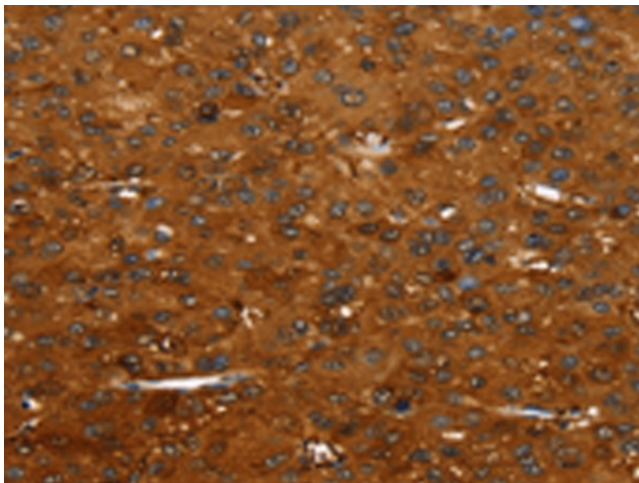
ACH; CD333; CEK2; HSGFR3EX; JTK4

**Protein Families:**

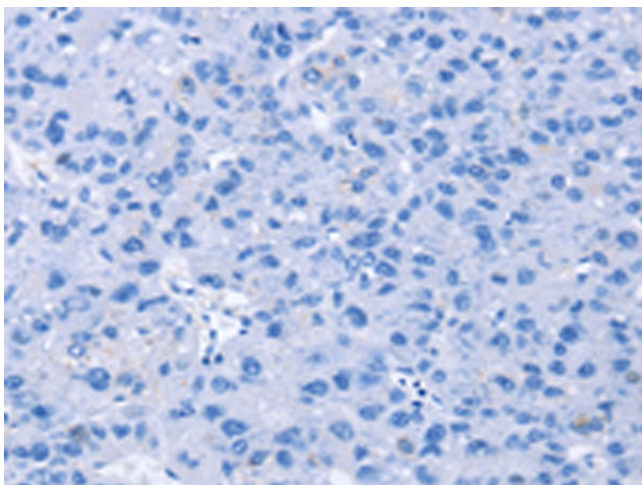
Druggable Genome, Protein Kinase, Transmembrane

**Protein Pathways:**

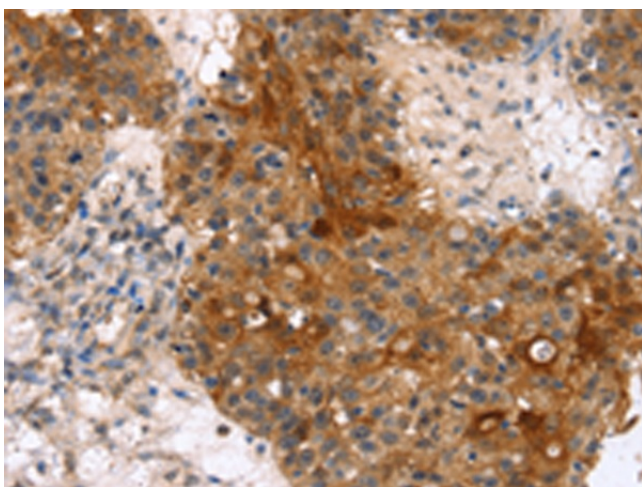
Bladder cancer, Endocytosis, MAPK signaling pathway, Pathways in cancer, Regulation of actin cytoskeleton

**Product images:**

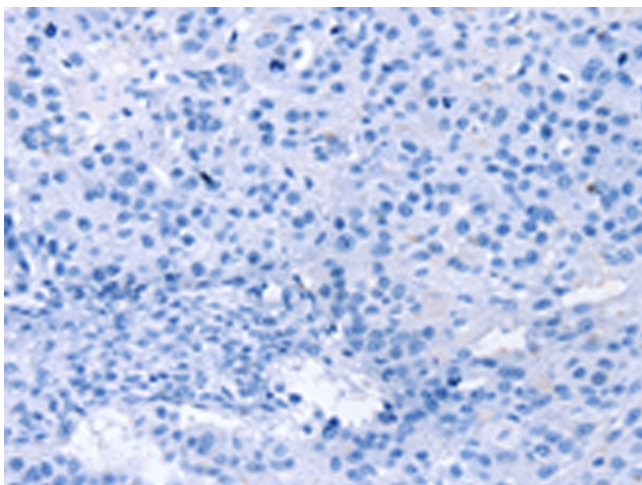
Immunohistochemistry of paraffin-embedded Human liver cancer tissue using TA323727 (FGFR3 Antibody) at dilution 1/35 (Original magnification:  $\times 200$ )



Immunohistochemistry of paraffin-embedded Human liver cancer tissue using TA323727 (FGFR3 Antibody) at dilution 1/35, treated with synthetic peptide. (Original magnification:  $\times 200$ )



Immunohistochemistry of paraffin-embedded Human breast cancer tissue using TA323727 (FGFR3 Antibody) at dilution 1/35 (Original magnification:  $\times 200$ )



Immunohistochemistry of paraffin-embedded Human breast cancer tissue using TA323727 (FGFR3 Antibody) at dilution 1/35, treated with synthetic peptide. (Original magnification:  $\times 200$ )