

## Product datasheet for **TA323725S**

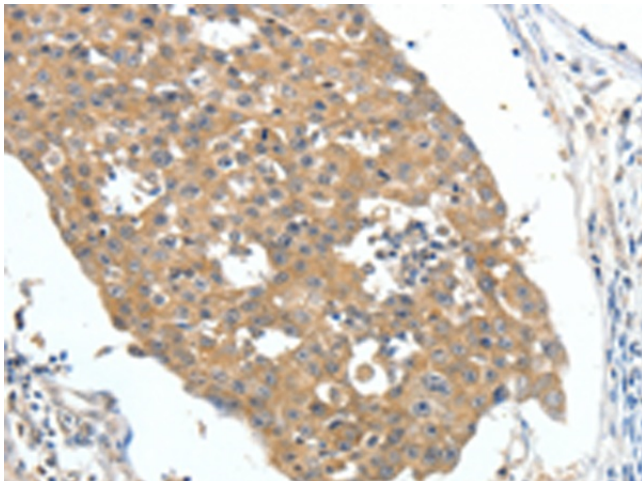
### FSH Receptor (FSHR) Rabbit Polyclonal Antibody

#### Product data:

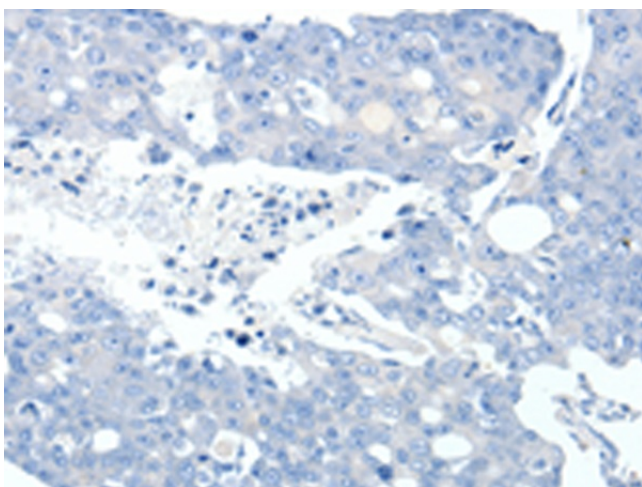
Product Type:	Primary Antibodies
Applications:	IHC
Recommended Dilution:	IHC: 50-200 Positive control: Human breast cancer Predicted cell location: Cytoplasm
Reactivity:	Human, Mouse, Rat
Host:	Rabbit
Isotype:	IgG
Clonality:	Polyclonal
Immunogen:	Fusion protein corresponding to a region derived from 28-218 amino acids of human follicle stimulating hormone receptor
Formulation:	PBS pH7.3, 0.05% NaN <sub>3</sub> , 50% glycerol
Purification:	Antigen affinity purification
Conjugation:	Unconjugated
Storage:	Store at -20°C as received.
Stability:	Stable for 12 months from date of receipt.
Gene Name:	follicle stimulating hormone receptor
Database Link:	<a href="#">NP_000136</a> <a href="#">Entrez Gene 14309 Mouse</a> <a href="#">Entrez Gene 25449 Rat</a> <a href="#">Entrez Gene 2492 Human</a> <a href="#">P23945</a>
Background:	The protein encoded by this gene belongs to family 1 of G-protein coupled receptors. It is the receptor for follicle stimulating hormone and functions in gonad development. Mutations in this gene cause ovarian dysgenesis type 1; and also ovarian hyperstimulation syndrome. Alternative splicing results in multiple transcript variants.
Synonyms:	FSHRO; LGR1; ODG1
Protein Families:	Druggable Genome, ES Cell Differentiation/IPS, GPCR, Transmembrane
Protein Pathways:	Neuroactive ligand-receptor interaction



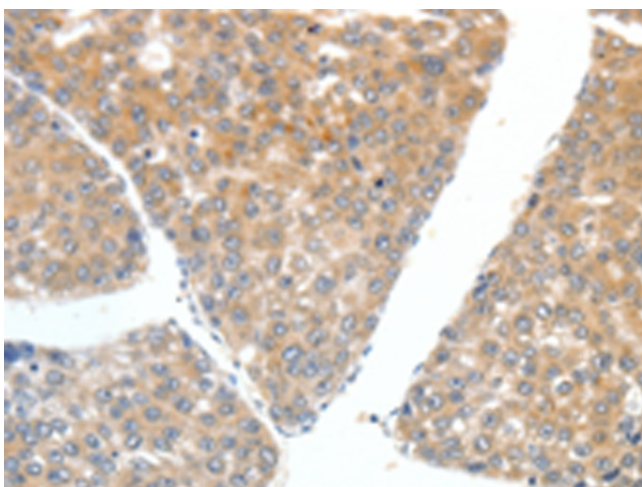
[View online »](#)

**Product images:**

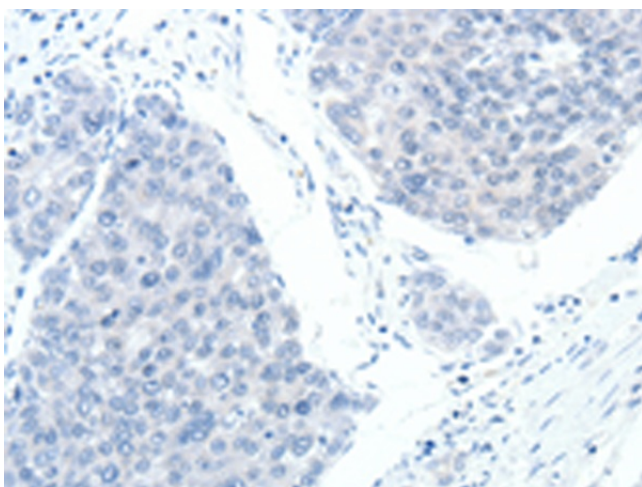
Immunohistochemistry of paraffin-embedded Human breast cancer tissue using [TA323725] (FSHR Antibody) at dilution 1/70 (Original magnification: ×200)



Immunohistochemistry of paraffin-embedded Human breast cancer tissue using [TA323725] (FSHR Antibody) at dilution 1/70, treated with fusion protein. (Original magnification: ×200)



Immunohistochemistry of paraffin-embedded Human liver cancer tissue using [TA323725] (FSHR Antibody) at dilution 1/70 (Original magnification:  $\times 200$ )



Immunohistochemistry of paraffin-embedded Human liver cancer tissue using [TA323725] (FSHR Antibody) at dilution 1/70, treated with fusion protein. (Original magnification:  $\times 200$ )