

## Product datasheet for **TA323724**

### FSH Receptor (FSHR) Rabbit Polyclonal Antibody

#### Product data:

Product Type:	Primary Antibodies
Applications:	IHC, WB
Recommended Dilution:	WB: 500-2000 WB positive control: Hela cell lysate IHC: 100-300 Positive control: Human esophagus cancer Predicted cell location: Cell membrane
Reactivity:	Human, Mouse, Rat
Host:	Rabbit
Isotype:	IgG
Clonality:	Polyclonal
Immunogen:	Fusion protein corresponding to a region derived from 28-218 amino acids of human follicle stimulating hormone receptorfollicle stimulating hormone receptor
Formulation:	PBS pH7.3, 0.05% NaN <sub>3</sub> , 50% glycerol
Concentration:	lot specific
Purification:	Antigen affinity purification
Conjugation:	Unconjugated
Storage:	Store at -20°C as received.
Stability:	Stable for 12 months from date of receipt.
Predicted Protein Size:	71 kDa
Gene Name:	follicle stimulating hormone receptor
Database Link:	<a href="#">NP_000136</a> <a href="#">Entrez Gene 14309 Mouse</a> <a href="#">Entrez Gene 25449 Rat</a> <a href="#">Entrez Gene 2492 Human</a> <a href="#">P23945</a>



[View online »](#)

**Background:**

The protein encoded by this gene belongs to family 1 of G-protein coupled receptors. It is the receptor for follicle stimulating hormone and functions in gonad development. Mutations in this gene cause ovarian dysgenesis type 1; and also ovarian hyperstimulation syndrome. Alternative splicing results in multiple transcript variants. Its activation is necessary for the hormonal functioning of FSH. FSHRs are found in the ovary; testis; and uterus.

**Synonyms:**

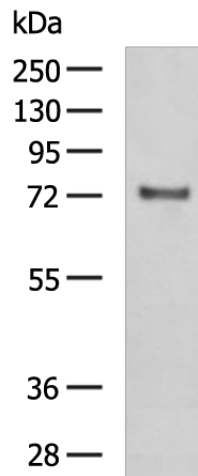
FSHRO; LGR1; ODG1

**Protein Families:**

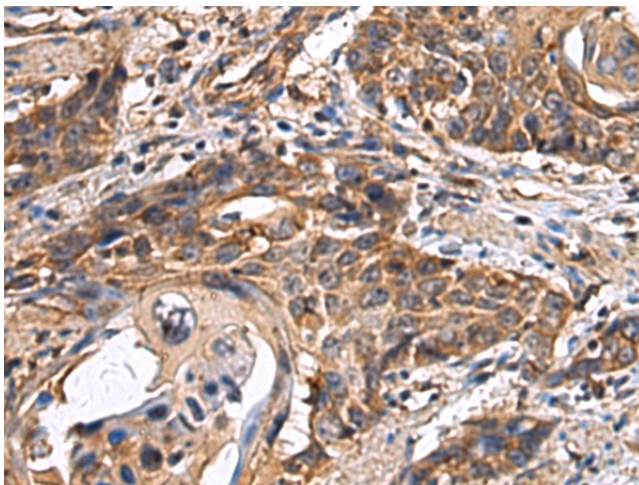
Druggable Genome, ES Cell Differentiation/IPS, GPCR, Transmembrane

**Protein Pathways:**

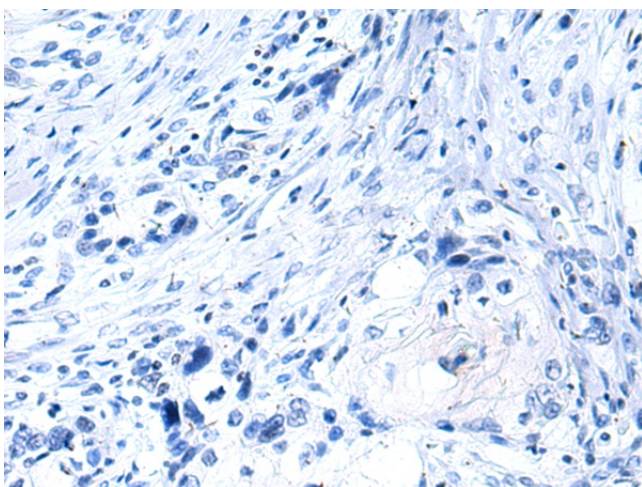
Neuroactive ligand-receptor interaction

**Product images:**


Gel: 8%SDS-PAGE  
 Lysate: 40 µg  
 Lane: HeLa cell lysate  
 Primary antibody: TA323724 (FSHR Antibody) at dilution 1/1000  
 Secondary antibody: Goat anti rabbit IgG at 1/5000 dilution  
 Exposure time: 30 seconds



Immunohistochemistry of paraffin-embedded Human esophagus cancer tissue using TA323724 (FSHR Antibody) at dilution 1/120 (Original magnification: ×200)



Immunohistochemistry of paraffin-embedded Human esophagus cancer tissue using TA323724 (FSHR Antibody) at dilution 1/120, treated with fusion protein. (Original magnification:  $\times 200$ )