

## Product datasheet for **TA323722**

### Growth hormone receptor (GHR) Rabbit Polyclonal Antibody

#### Product data:

Product Type:	Primary Antibodies
Applications:	WB
Recommended Dilution:	WB: 200-1000 WB positive control: PC cell
Reactivity:	Human, Mouse, Rat
Host:	Rabbit
Isotype:	IgG
Clonality:	Polyclonal
Immunogen:	Synthetic peptide corresponding to a region derived from 48-63 amino acids of Human growth hormone receptor
Formulation:	PBS pH7.3, 0.05% NaN <sub>3</sub> , 50% glycerol
Concentration:	lot specific
Purification:	Antigen affinity purification
Conjugation:	Unconjugated
Storage:	Store at -20°C as received.
Stability:	Stable for 12 months from date of receipt.
Predicted Protein Size:	69 kDa
Gene Name:	growth hormone receptor
Database Link:	<a href="#">NP_000154</a> <a href="#">Entrez Gene 14600 Mouse</a> <a href="#">Entrez Gene 25235 Rat</a> <a href="#">Entrez Gene 2690 Human</a> <a href="#">P10912</a>



[View online »](#)

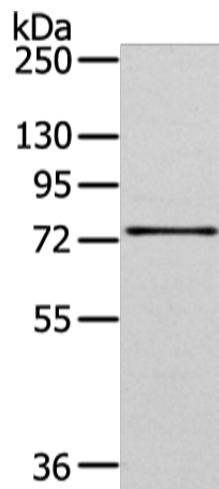
**Background:** This gene encodes a member of the type I cytokine receptor family; which is a transmembrane receptor for growth hormone. Binding of growth hormone to the receptor leads to receptor dimerization and the activation of an intra- and intercellular signal transduction pathway leading to growth. Mutations in this gene have been associated with Laron syndrome; also known as the growth hormone insensitivity syndrome (GHIS); a disorder characterized by short stature. In humans and rabbits; but not rodents; growth hormone binding protein (GHBP) is generated by proteolytic cleavage of the extracellular ligand-binding domain from the mature growth hormone receptor protein. Multiple alternatively spliced transcript variants have been found for this gene.

**Synonyms:** GHBP; GHIP

**Protein Families:** Druggable Genome, Transmembrane

**Protein Pathways:** Cytokine-cytokine receptor interaction, Jak-STAT signaling pathway, Neuroactive ligand-receptor interaction

**Product images:**



Gel: 6%SDS-PAGE  
Lysate: 40  $\mu$ g  
Lane: PC cell  
Primary antibody: TA323722 (GHR Antibody) at dilution 1/400  
Secondary antibody: Goat anti rabbit IgG at 1/8000 dilution  
Exposure time: 2 minutes