

Product datasheet for **TA323719**

Glutathione Synthetase (GSS) Rabbit Polyclonal Antibody

Product data:

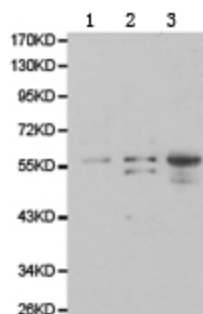
Product Type:	Primary Antibodies
Applications:	WB
Recommended Dilution:	WB: 1:500-2000
Reactivity:	Human, Mouse, Rat
Host:	Rabbit
Isotype:	IgG
Clonality:	Polyclonal
Immunogen:	Full length fusion protein
Formulation:	PBS pH7.3, 0.05% NaN ₃ , 50% glycerol
Concentration:	lot specific
Purification:	Antigen affinity purification
Conjugation:	Unconjugated
Storage:	Store at -20°C as received.
Stability:	Stable for 12 months from date of receipt.
Predicted Protein Size:	52 kDa
Gene Name:	glutathione synthetase
Database Link:	NP_000169 Entrez Gene 14854 MouseEntrez Gene 25458 RatEntrez Gene 2937 Human P48637
Background:	Glutathione is important for a variety of biological functions, including protection of cells from oxidative damage by free radicals, detoxification of xenobiotics, and membrane transport. The protein encoded by this gene functions as a homodimer to catalyze the second step of glutathione biosynthesis, which is the ATP-dependent conversion of gamma-L-glutamyl-L-cysteine to glutathione. Defects in this gene are a cause of glutathione synthetase deficiency.
Synonyms:	GSHS; HEL-S-64p; HEL-S-88n
Protein Families:	Druggable Genome



[View online »](#)

Protein Pathways: Glutathione metabolism, Metabolic pathways

Product images:



Predicted band size: 52 kDa. Positive control: 293T, HeLa and HT-1080 cell lysate. Recommended dilution: 1/500-2000. (Gel: 10%SDS-PAGE Lane 1: 293T cell lysate Lane 2: HeLa cell lysate Lane 3: HT-1080 cell lysate Lysates: 40 ug per lane Primary antibody: 1/500 dilution Secondary antibody: Goat anti Rabbit IgG - H&L (HRP) at 1/10000 dilution Exposure time: 1 minute)