

## Product datasheet for **TA323718**

### Gelsolin (GSN) Rabbit Polyclonal Antibody

#### Product data:

Product Type:	Primary Antibodies
Applications:	IHC
Recommended Dilution:	IHC: 50-200 Positive control: Human liver cancer Predicted cell location: Cytoplasm
Reactivity:	Human, Mouse, Rat
Host:	Rabbit
Isotype:	IgG
Clonality:	Polyclonal
Immunogen:	Synthetic peptide corresponding to a region derived from 768-782 amino acids of Human gelsolin
Formulation:	PBS pH7.3, 0.05% NaN <sub>3</sub> , 50% glycerol
Concentration:	lot specific
Purification:	Antigen affinity purification
Conjugation:	Unconjugated
Storage:	Store at -20°C as received.
Stability:	Stable for 12 months from date of receipt.
Predicted Protein Size:	81 kDa
Gene Name:	gelsolin
Database Link:	<a href="#">NP_000168</a> <a href="#">Entrez Gene 227753 Mouse</a> <a href="#">Entrez Gene 296654 Rat</a> <a href="#">Entrez Gene 2934 Human</a> <a href="#">P06396</a>
Background:	The protein encoded by this gene binds to the "plus" ends of actin monomers and filaments to prevent monomer exchange. The encoded calcium-regulated protein functions in both assembly and disassembly of actin filaments. Defects in this gene are a cause of familial amyloidosis Finnish type (FAF). Multiple transcript variants encoding several different isoforms have been found for this gene.
Synonyms:	ADF; AGEL

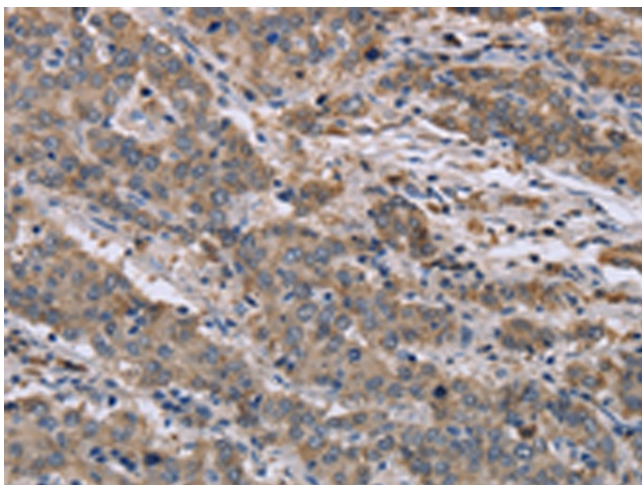


[View online »](#)

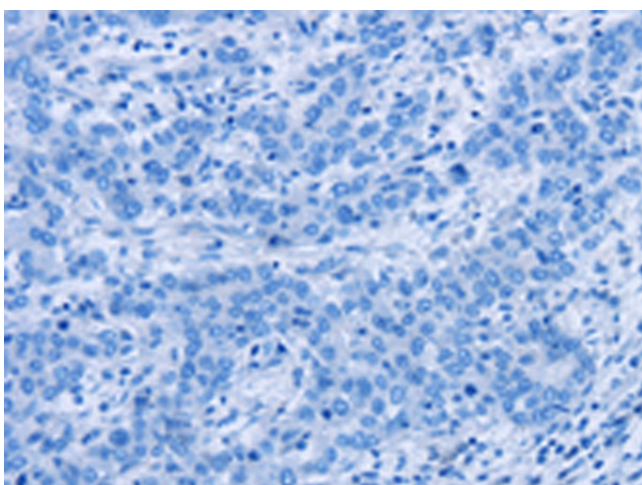
**Protein Families:** Druggable Genome, Secreted Protein

**Protein Pathways:** Fc gamma R-mediated phagocytosis, Regulation of actin cytoskeleton

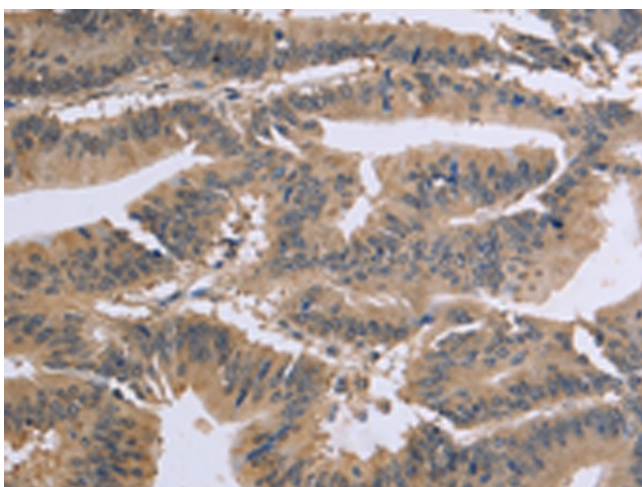
**Product images:**



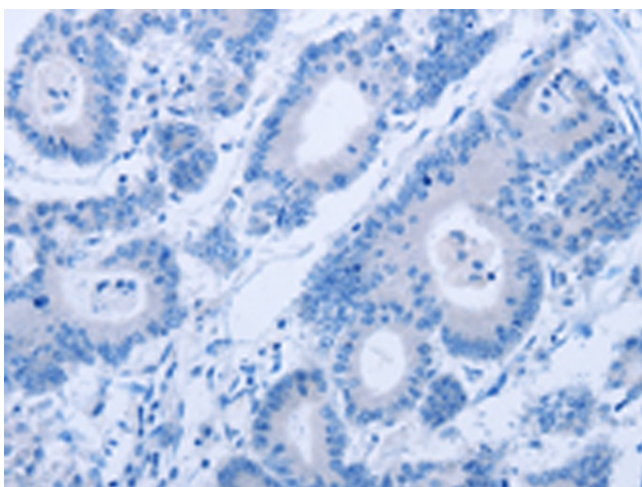
Immunohistochemistry of paraffin-embedded Human liver cancer tissue using TA323718 (GSN Antibody) at dilution 1/40 (Original magnification: ×200)



Immunohistochemistry of paraffin-embedded Human liver cancer tissue using TA323718 (GSN Antibody) at dilution 1/40, treated with synthetic peptide. (Original magnification: ×200)



Immunohistochemistry of paraffin-embedded Human colon cancer tissue using TA323718 (GSN Antibody) at dilution 1/40 (Original magnification: ×200)



Immunohistochemistry of paraffin-embedded Human colon cancer tissue using TA323718 (GSN Antibody) at dilution 1/40, treated with synthetic peptide. (Original magnification: ×200)