

Product datasheet for **TA323714**

CD61 (ITGB3) Rabbit Polyclonal Antibody

Product data:

Product Type:	Primary Antibodies
Applications:	WB
Recommended Dilution:	WB: 1:500-1000
Reactivity:	Human, Mouse
Modifications:	Phospho-specific
Host:	Rabbit
Isotype:	IgG
Clonality:	Polyclonal
Immunogen:	Peptide sequence around phosphorylation site of tyrosine 785 (I-T-Y(p)-R-G) derived from Human Integrin β 3.
Formulation:	PBS pH7.3, 0.05% NaN ₃ , 50% glycerol
Concentration:	lot specific
Purification:	Antigen affinity purification
Conjugation:	Unconjugated
Storage:	Store at -20°C as received.
Stability:	Stable for 12 months from date of receipt.
Predicted Protein Size:	87 kDa
Gene Name:	integrin subunit beta 3
Database Link:	NP_000203 Entrez Gene 16416 Mouse Entrez Gene 3690 Human P05106



[View online »](#)

Background:

Integrin alpha-V/beta-3 is a receptor for cytotactin, fibronectin, laminin, matrix metalloproteinase-2, osteopontin, osteomodulin, prothrombin, thrombospondin, vitronectin and von Willebrand factor. Integrin alpha-IIb/beta-3 is a receptor for fibronectin, fibrinogen, plasminogen, prothrombin, thrombospondin and vitronectin. Integrins alpha-IIb/beta-3 and alpha-V/beta-3 recognize the sequence R-G-D in a wide array of ligands. Integrin alpha-IIb/beta-3 recognizes the sequence H-H-L-G-G-A-K-Q-A-G-D-V in fibrinogen gamma chain. Following activation integrin alpha-IIb/beta-3 brings about platelet/platelet interaction through binding of soluble fibrinogen. This step leads to rapid platelet aggregation which physically plugs ruptured endothelial surface. In case of HIV-1 infection, the interaction with extracellular viral Tat protein seems to enhance angiogenesis in Kaposi's sarcoma lesions.

Synonyms:

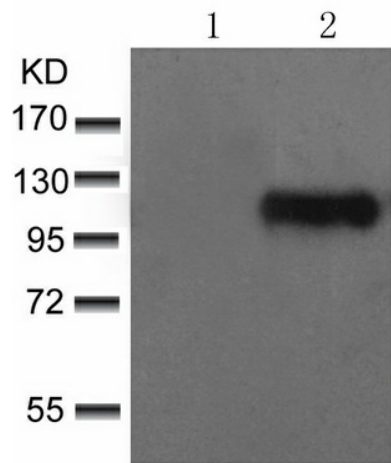
BDPLT2; BDPLT16; CD61; GP3A; GPIIIa; GT

Protein Families:

Druggable Genome, ES Cell Differentiation/IPS, Transmembrane

Protein Pathways:

Arrhythmogenic right ventricular cardiomyopathy (ARVC), Dilated cardiomyopathy, ECM-receptor interaction, Focal adhesion, Hematopoietic cell lineage, Hypertrophic cardiomyopathy (HCM), Regulation of actin cytoskeleton

Product images:

Predicted band size: 87 kDa. Positive control: HUVEC cells lysate. Recommended dilution: 1/500-1000. (Gel: 8%SDS-PAGE Lane 1: Treated with the peptide Lane 2: HUVEC cells lysate Lysates: 30 ug per lane Primary antibody: 1/500 dilution Secondary antibody: Goat anti Rabbit IgG - H&L (HRP) at 1/10000 dilution Exposure time: 1 minute)