

## Product datasheet for **TA323710S**

### LAMA3 Rabbit Polyclonal Antibody

#### Product data:

Product Type:	Primary Antibodies
Applications:	IHC
Recommended Dilution:	IHC: 50-200 Positive control: Human liver cancer Predicted cell location: Cytoplasm
Reactivity:	Human, Mouse
Host:	Rabbit
Isotype:	IgG
Clonality:	Polyclonal
Immunogen:	Synthetic peptide corresponding to a region derived from 102-114 amino acids of Human laminin, alpha 3
Formulation:	PBS pH7.3, 0.05% NaN <sub>3</sub> , 50% glycerol
Purification:	Antigen affinity purification
Conjugation:	Unconjugated
Storage:	Store at -20°C as received.
Stability:	Stable for 12 months from date of receipt.
Gene Name:	laminin subunit alpha 3
Database Link:	<a href="#">NP_000218</a> <a href="#">Entrez Gene 16774 Mouse</a> <a href="#">Entrez Gene 3909 Human</a> <a href="#">Q16787</a>
Background:	Laminins are basement membrane components thought to mediate the attachment; migration and organization of cells into tissues during embryonic development by interacting with other extracellular matrix components. The protein encoded by this gene is the alpha-3 subunit of laminin 5; which is a complex glycoprotein composed of three subunits (alpha; beta; and gamma). Laminin 5 is thought to be involved in cell adhesion; signal transduction and differentiation of keratinocytes. Mutations in this gene have been identified as the cause of Herlitz type junctional epidermolysis bullosa. Alternatively spliced transcript variants encoding different isoforms have been identified for this gene.



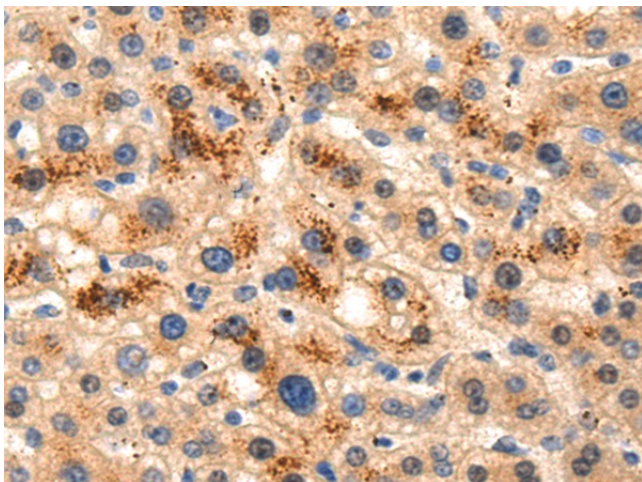
[View online »](#)

**Synonyms:** BM600; E170; LAMNA; LOCS

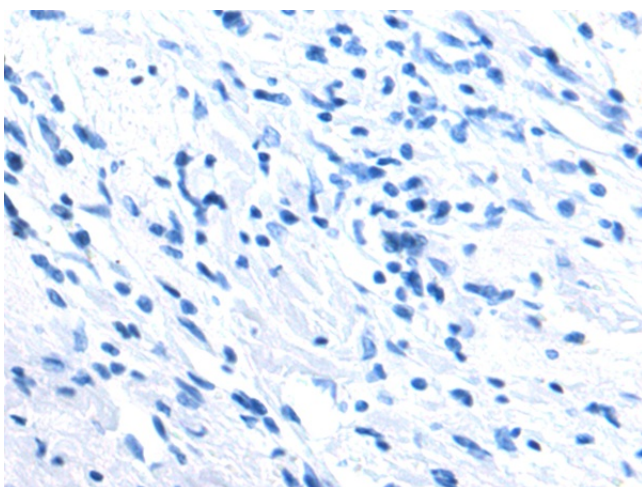
**Protein Families:** Druggable Genome, Secreted Protein

**Protein Pathways:** ECM-receptor interaction, Focal adhesion, Pathways in cancer, Small cell lung cancer

**Product images:**



Immunohistochemistry of paraffin-embedded Human liver cancer tissue using [TA323710] (LAMA3 Antibody) at dilution 1/50 (Original magnification: x200)



Immunohistochemistry of paraffin-embedded Human liver cancer tissue using [TA323710] (LAMA3 Antibody) at dilution 1/50, treated with synthetic peptide. (Original magnification: x200)