

Name: Anti-MYOC Rabbit Polyclonal Antibody
Product Data Sheet - ANTIBODY

Catalog: TA323708

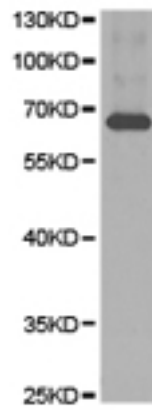
Components:	• Anti-MYOC Rabbit Polyclonal Antibody (TA323708)
Amount:	100ul
Immunogen:	Fusion protein corresponding to C terminal 260 amino acids of human myocilin, trabecular meshwork inducible glucocorticoid response
Host:	Rabbit
Isotype:	IgG
Species Reactivity:	Human; Mouse; Rat
Guaranteed Applications:	WB
Suggested Dilutions:	WB: 1:500-2000
Concentration:	2.55 mg/ml
Buffer:	PBS pH7.3, 0.05% NaN ₃ , 50% glycerol
Purification:	Antigen affinity purification
Storage Condition:	Shipped at -20C or with ice packs. Upon delivery store at -20C. Dilute in PBS (pH7.3) if necessary. Stable for 12 months from date of receipt. Avoid repeated freeze-thaws.

Target

Target Name:	myocilin
Alternative Name:	GLC1A GPOA JOAG JOAG1 TIGR
Database Link:	NP_000252 Entrez Gene 4653 Human Entrez Gene 17926 Mouse Entrez Gene 81523 Rat
Function:	Myocilin (MYOC), also known as TIGR or GLC1A, is a secreted glycoprotein of the olfactomedin family, originally identified in trabecular meshwork cells after prolonged treatment with glucocorticoids, and, independently, in the retina. It may participate in the obstruction of fluid outflow in the trabecular meshwork. Defects in MYOC are the cause of primary open angle glaucoma (POAG). MYOC has a molecular weight of 55-57 kDa, besides, a 66-kDa form, which could be a result of post-translational modifications, has also been reported in some researches.

This product is to be used for laboratory only. Not for diagnostic or therapeutic use.

Validation Data



Predicted band size: 57 kDa . Positive control: Heart tissue lysate. Recommended dilution: 1/500-2000. (Gel: 10%SDS-PAGE Lysate: 40 ug Primary antibody: 1/500 dilution Secondary antibody: Goat anti Rabbit IgG - H&L (HRP) at 1/10000 dilution Exposure time: 1 minute)

* More validation images may be available on our website: <http://www.origene.com/antibody/TA323708.aspx>

This product is to be used for laboratory only. Not for diagnostic or therapeutic use.

© 2017 OriGene Technologies, Inc. 9620 Medical Center Dr., Suite 200, Rockville, MD 20850
