

Product datasheet for **TA323707**

CMH1 (MYH7) Rabbit Polyclonal Antibody

Product data:

Product Type:	Primary Antibodies
Applications:	IHC
Recommended Dilution:	IHC: 50-200 Positive control: Human gastric cancer Predicted cell location: Cytoplasm
Reactivity:	Human, Mouse, Rat
Host:	Rabbit
Isotype:	IgG
Clonality:	Polyclonal
Immunogen:	Fusion protein corresponding to C terminal 300 amino acids of human myosin, heavy chain 7, cardiac muscle, beta
Formulation:	PBS pH7.3, 0.05% NaN ₃ , 50% glycerol
Concentration:	lot specific
Purification:	Antigen affinity purification
Conjugation:	Unconjugated
Storage:	Store at -20°C as received.
Stability:	Stable for 12 months from date of receipt.
Gene Name:	myosin, heavy chain 7, cardiac muscle, beta
Database Link:	NP_000248 Entrez Gene 29557 Rat Entrez Gene 140781 Mouse Entrez Gene 4625 Human P12883



[View online »](#)

Background:

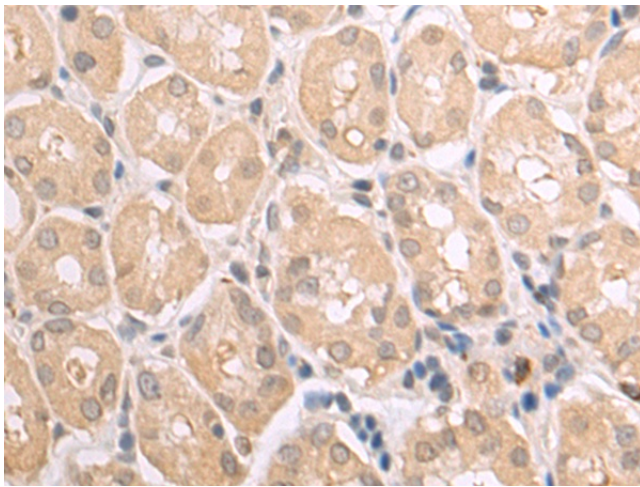
Muscle myosin is a hexameric protein containing 2 heavy chain subunits; 2 alkali light chain subunits; and 2 regulatory light chain subunits. This gene encodes the beta (or slow) heavy chain subunit of cardiac myosin. It is expressed predominantly in normal human ventricle. It is also expressed in skeletal muscle tissues rich in slow-twitch type I muscle fibers. Changes in the relative abundance of this protein and the alpha (or fast) heavy subunit of cardiac myosin correlate with the contractile velocity of cardiac muscle. Its expression is also altered during thyroid hormone depletion and hemodynamic overloading. Mutations in this gene are associated with familial hypertrophic cardiomyopathy; myosin storage myopathy; dilated cardiomyopathy; and Laing early-onset distal myopathy.

Synonyms:

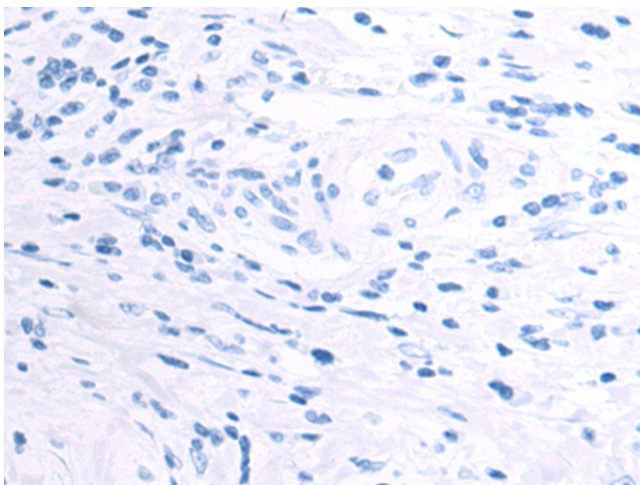
CMD1S; CMH1; MPD1; MYHCB; SPMD; SPMM

Protein Pathways:

Cardiac muscle contraction, Dilated cardiomyopathy, Hypertrophic cardiomyopathy (HCM), Tight junction, Viral myocarditis

Product images:

Immunohistochemistry of paraffin-embedded Human gastric cancer tissue using TA323707 (MYH7 Antibody) at dilution 1/80 (Original magnification: x200)



Immunohistochemistry of paraffin-embedded Human gastric cancer tissue using TA323707 (MYH7 Antibody) at dilution 1/80, treated with fusion protein. (Original magnification: x200)