

## Product datasheet for **TA323703**

### Polycystin 2 (PKD2) Rabbit Polyclonal Antibody

#### Product data:

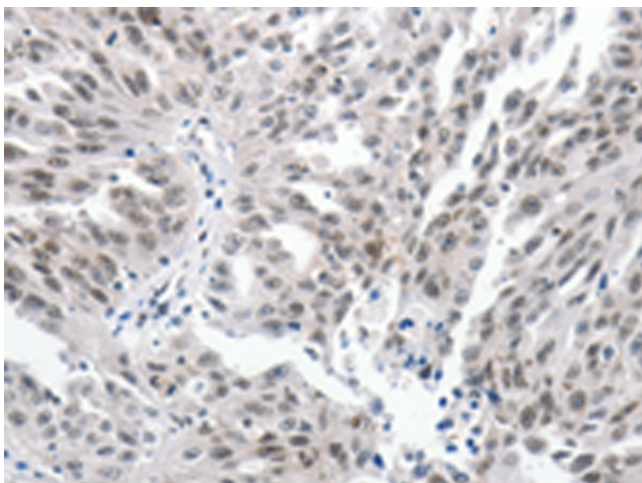
Product Type:	Primary Antibodies
Applications:	IHC
Recommended Dilution:	IHC: 25-100 Positive control: Human ovarian cancer Predicted cell location: Cytoplasm, Nucleus
Reactivity:	Human
Host:	Rabbit
Isotype:	IgG
Clonality:	Polyclonal
Immunogen:	Synthetic peptide corresponding to a region derived from 956-968 amino acids of Human polycystic kidney disease 2 (autosomal dominant)
Formulation:	PBS pH7.3, 0.05% NaN <sub>3</sub> , 50% glycerol
Concentration:	lot specific
Purification:	Antigen affinity purification
Conjugation:	Unconjugated
Storage:	Store at -20°C as received.
Stability:	Stable for 12 months from date of receipt.
Gene Name:	polycystin 2, transient receptor potential cation channel
Database Link:	<a href="#">NP_000288</a> <a href="#">Entrez Gene 5311 Human</a> <a href="#">Q13563</a>
Background:	This gene encodes a member of the polycystin protein family. The encoded protein is a multi-pass membrane protein that functions as a calcium permeable cation channel; and is involved in calcium transport and calcium signaling in renal epithelial cells. This protein interacts with polycystin 1; and they may be partners in a common signaling cascade involved in tubular morphogenesis. Mutations in this gene are associated with autosomal dominant polycystic kidney disease type 2.
Synonyms:	APKD2; Pc-2; PC2; PKD4; TRPP2



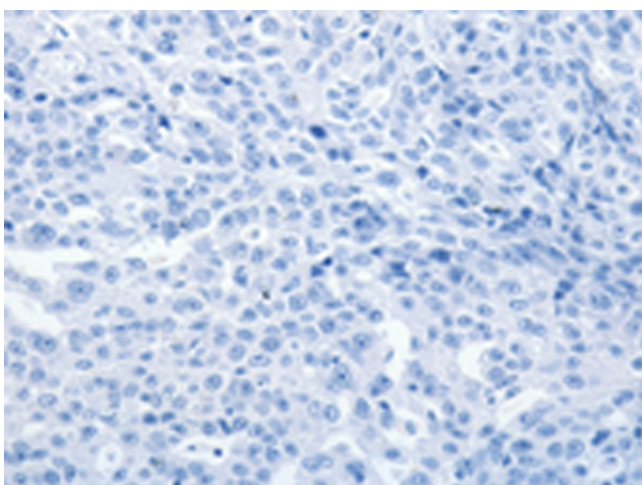
[View online »](#)

Protein Families: Druggable Genome, Ion Channels: Transient receptor potential, Transmembrane

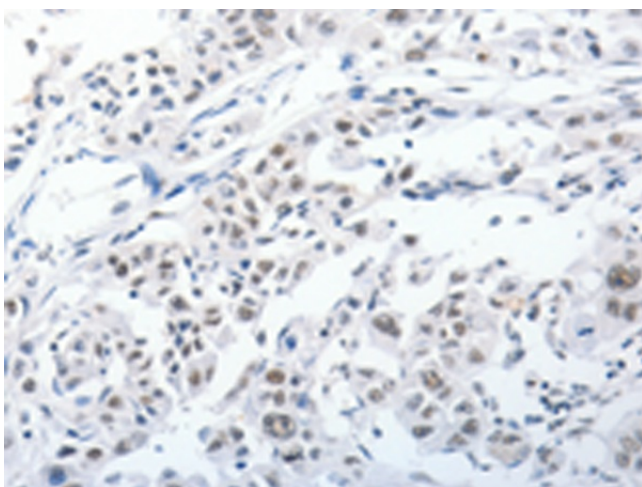
### Product images:



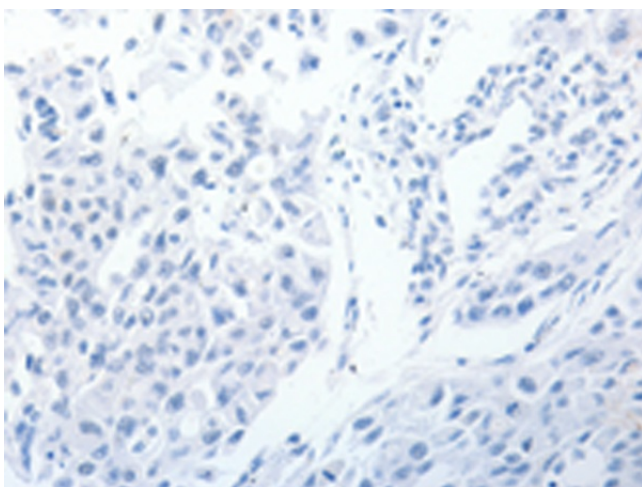
Immunohistochemistry of paraffin-embedded Human ovarian cancer tissue using TA323703 (PKD2 Antibody) at dilution 1/25 (Original magnification:  $\times 200$ )



Immunohistochemistry of paraffin-embedded Human ovarian cancer tissue using TA323703 (PKD2 Antibody) at dilution 1/25, treated with synthetic peptide. (Original magnification:  $\times 200$ )



Immunohistochemistry of paraffin-embedded Human lung cancer tissue using TA323703 (PKD2 Antibody) at dilution 1/25 (Original magnification: x200)



Immunohistochemistry of paraffin-embedded Human lung cancer tissue using TA323703 (PKD2 Antibody) at dilution 1/25, treated with synthetic peptide. (Original magnification: x200)