

Product datasheet for **TA323697**

SCNN1B Rabbit Polyclonal Antibody

Product data:

Product Type:	Primary Antibodies
Applications:	WB
Recommended Dilution:	WB: 1:500-2000
Reactivity:	Human, Mouse, Rat
Host:	Rabbit
Isotype:	IgG
Clonality:	Polyclonal
Immunogen:	Fusion protein corresponding to a region derived from 260-514 amino acids of human sodium channel, non-voltage-gated 1, beta subunit
Formulation:	PBS pH7.3, 0.05% NaN ₃ , 50% glycerol
Concentration:	lot specific
Purification:	Antigen affinity purification
Conjugation:	Unconjugated
Storage:	Store at -20°C as received.
Stability:	Stable for 12 months from date of receipt.
Predicted Protein Size:	73 kDa
Gene Name:	sodium channel epithelial 1 beta subunit
Database Link:	NP_000327 Entrez Gene 20277 Mouse Entrez Gene 24767 Rat Entrez Gene 6338 Human P51168
Background:	SCNN1B, also named as SCNEB, ENaCb, Beta-NaCH and Beta-ENaC, belongs to the amiloride-sensitive sodium channel (TC 1.A.6) family and SCNN1B subfamily. Sodium permeable non-voltage-sensitive ion channel is inhibited by the diuretic amiloride. SCNN1B mediates the electrodiffusion of the luminal sodium (and water, which follows osmotically) through the apical membrane of epithelial cells. It controls the reabsorption of sodium in kidney, colon, lung and sweat glands. SCNN1B plays a role in taste perception.
Synonyms:	BESC1; ENaCb; ENaCbeta; SCNEB

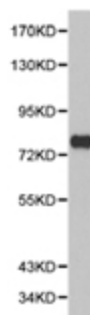


[View online »](#)

Protein Families: Druggable Genome, Ion Channels: Other, Transmembrane

Protein Pathways: Taste transduction

Product images:



Predicted band size: 73 kDa. Positive control: PC-3 cell lysate. Recommended dilution: 1/500-2000. (Gel: 8%SDS-PAGE Lysate: 40 ug Primary antibody: 1/500 dilution Secondary antibody: Goat anti Rabbit IgG - H&L (HRP) at 1/10000 dilution Exposure time: 1 minute)