

## Product datasheet for **TA323695S**

### SLC12A1 Rabbit Polyclonal Antibody

#### Product data:

Product Type:	Primary Antibodies
Applications:	IHC, WB
Recommended Dilution:	WB: 200-1000 WB positive control: Human fetal kidney tissue IHC: 25-100 Positive control: Human colon cancer Predicted cell location: Cytoplasm
Reactivity:	Human, Mouse, Rat
Host:	Rabbit
Isotype:	IgG
Clonality:	Polyclonal
Immunogen:	Fusion protein corresponding to a region derived from 80-172 amino acids of human solute carrier family 12 (sodium/potassium/chloride transporters), member 1
Formulation:	PBS pH7.3, 0.05% NaN <sub>3</sub> , 50% glycerol
Purification:	Antigen affinity purification
Conjugation:	Unconjugated
Storage:	Store at -20°C as received.
Stability:	Stable for 12 months from date of receipt.
Predicted Protein Size:	46 kDa
Gene Name:	solute carrier family 12 member 1
Database Link:	<a href="#">NP_000329</a> <a href="#">Entrez Gene 20495 Mouse</a> <a href="#">Entrez Gene 25065 Rat</a> <a href="#">Entrez Gene 6557 Human</a> <a href="#">Q13621</a>



[View online »](#)

**Background:**

This gene encodes a kidney-specific sodium-potassium-chloride cotransporter that is expressed on the luminal membrane of renal epithelial cells of the thick ascending limb of Henle's loop and the macula densa. It plays a key role in concentrating urine and accounts for most of the NaCl resorption. It is sensitive to such diuretics as furosemide and bumetanide. Some Bartter-like syndromes result from defects in this gene. Alternative splicing results in multiple transcript variants encoding distinct isoforms. Additional splice variants have been described but their biological validity in humans has not been experimentally proven.

**Synonyms:**

BSC1; NKCC2

**Protein Families:**

Druggable Genome, Transmembrane

**Product images:**

Gel: 12%SDS-PAGE

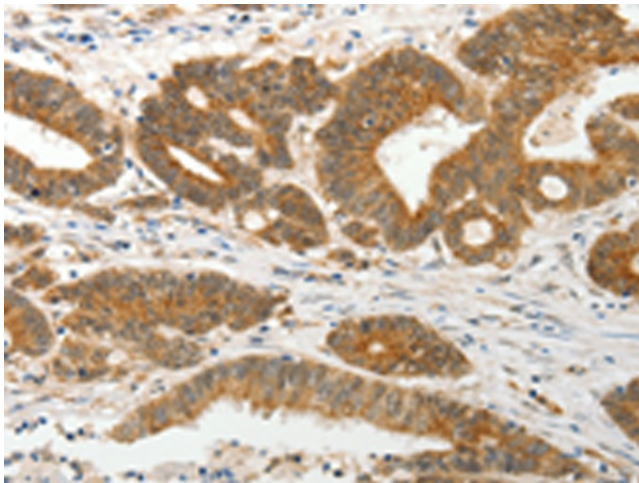
Lysate: 40 µg

Lane: Human fetal kidney tissue

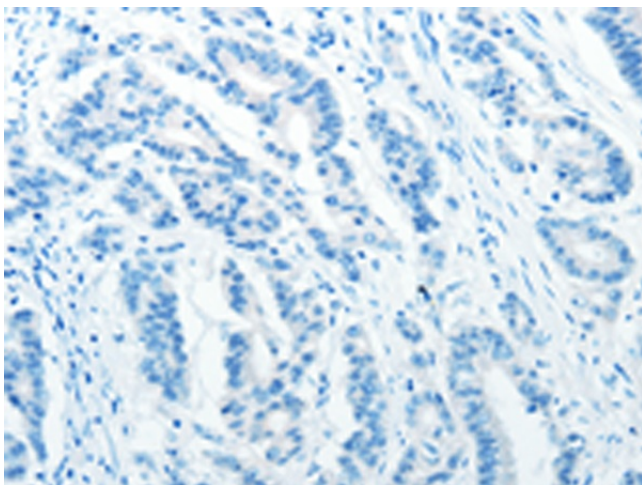
Primary antibody: [TA323695] (SLC12A1 Antibody) at dilution 1/200

Secondary antibody: Goat anti rabbit IgG at 1/8000 dilution

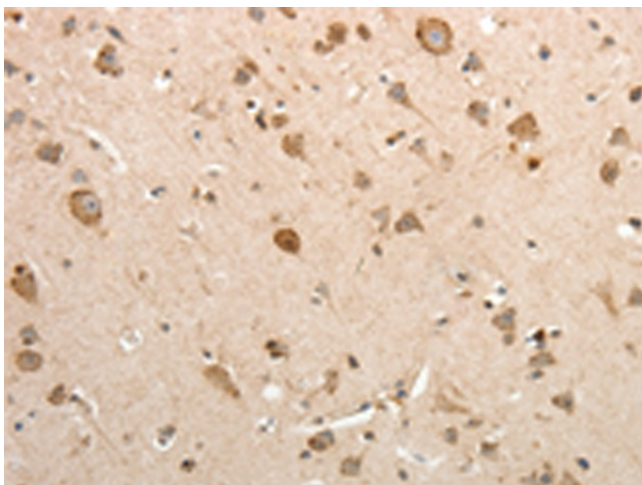
Exposure time: 1 minute



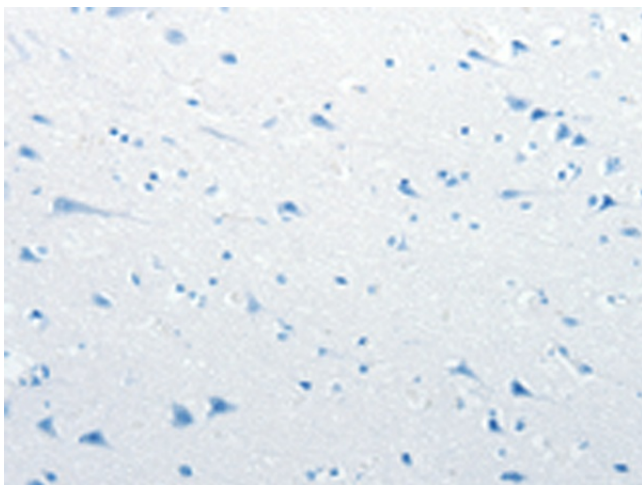
Immunohistochemistry of paraffin-embedded Human colon cancer tissue using [TA323695] (SLC12A1 Antibody) at dilution 1/15 (Original magnification: ×200)



Immunohistochemistry of paraffin-embedded Human colon cancer tissue using [TA323695] (SLC12A1 Antibody) at dilution 1/15, treated with fusion protein. (Original magnification:  $\times 200$ )



Immunohistochemistry of paraffin-embedded Human brain tissue using [TA323695] (SLC12A1 Antibody) at dilution 1/15 (Original magnification:  $\times 200$ )



Immunohistochemistry of paraffin-embedded Human brain tissue using [TA323695] (SLC12A1 Antibody) at dilution 1/15, treated with fusion protein. (Original magnification:  $\times 200$ )