

Product datasheet for **TA323695**

SLC12A1 Rabbit Polyclonal Antibody

Product data:

Product Type:	Primary Antibodies
Applications:	IHC, WB
Recommended Dilution:	WB: 200-1000 WB positive control: Human fetal kidney tissue IHC: 25-100 Positive control: Human colon cancer Predicted cell location: Cytoplasm
Reactivity:	Human, Mouse, Rat
Host:	Rabbit
Isotype:	IgG
Clonality:	Polyclonal
Immunogen:	Fusion protein corresponding to a region derived from 80-172 amino acids of human solute carrier family 12 (sodium/potassium/chloride transporters), member 1
Formulation:	PBS pH7.3, 0.05% NaN ₃ , 50% glycerol
Concentration:	lot specific
Purification:	Antigen affinity purification
Conjugation:	Unconjugated
Storage:	Store at -20°C as received.
Stability:	Stable for 12 months from date of receipt.
Predicted Protein Size:	46 kDa
Gene Name:	solute carrier family 12 member 1
Database Link:	NP_000329 Entrez Gene 20495 Mouse Entrez Gene 25065 Rat Entrez Gene 6557 Human Q13621



[View online »](#)

Background:

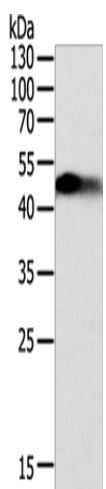
This gene encodes a kidney-specific sodium-potassium-chloride cotransporter that is expressed on the luminal membrane of renal epithelial cells of the thick ascending limb of Henle's loop and the macula densa. It plays a key role in concentrating urine and accounts for most of the NaCl resorption. It is sensitive to such diuretics as furosemide and bumetanide. Some Bartter-like syndromes result from defects in this gene. Alternative splicing results in multiple transcript variants encoding distinct isoforms. Additional splice variants have been described but their biological validity in humans has not been experimentally proven.

Synonyms:

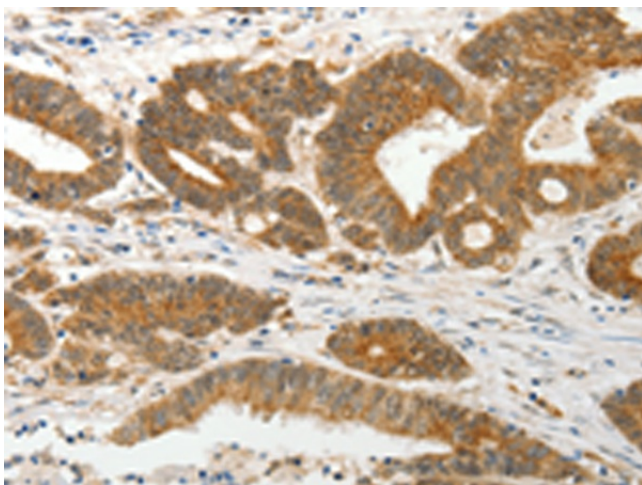
BSC1; NKCC2

Protein Families:

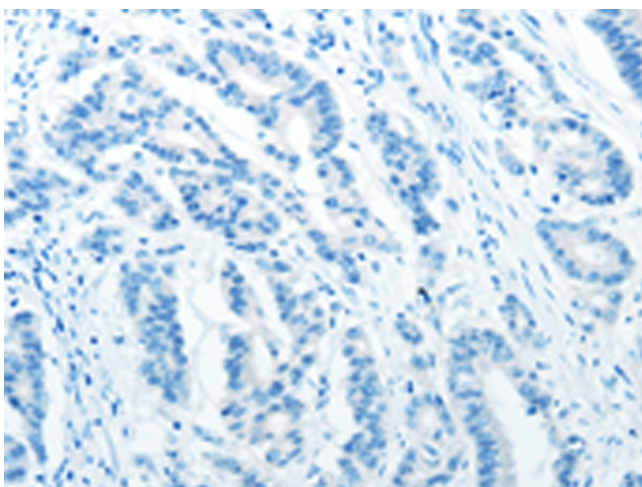
Druggable Genome, Transmembrane

Product images:

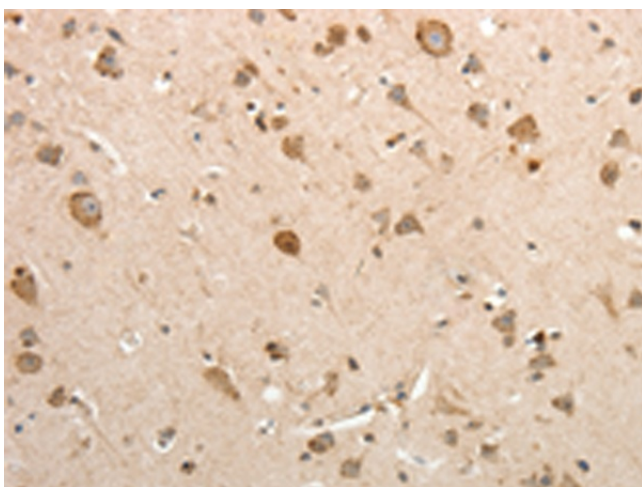
Gel: 12%SDS-PAGE
Lysate: 40 µg
Lane: Human fetal kidney tissue
Primary antibody: TA323695 (SLC12A1 Antibody)
at dilution 1/200
Secondary antibody: Goat anti rabbit IgG at
1/8000 dilution
Exposure time: 1 minute



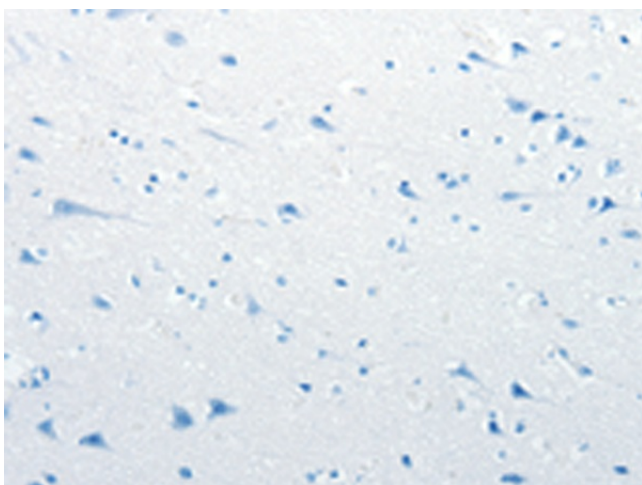
Immunohistochemistry of paraffin-embedded
Human colon cancer tissue using TA323695
(SLC12A1 Antibody) at dilution 1/15 (Original
magnification: ×200)



Immunohistochemistry of paraffin-embedded Human colon cancer tissue using TA323695 (SLC12A1 Antibody) at dilution 1/15, treated with fusion protein. (Original magnification: ×200)



Immunohistochemistry of paraffin-embedded Human brain tissue using TA323695 (SLC12A1 Antibody) at dilution 1/15 (Original magnification: ×200)



Immunohistochemistry of paraffin-embedded Human brain tissue using TA323695 (SLC12A1 Antibody) at dilution 1/15, treated with fusion protein. (Original magnification: ×200)