

Product datasheet for **TA323694S**

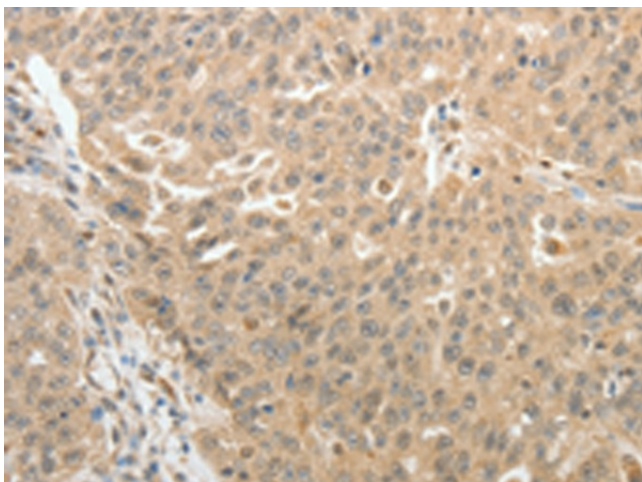
Tyrosine Hydroxylase (TH) Rabbit Polyclonal Antibody

Product data:

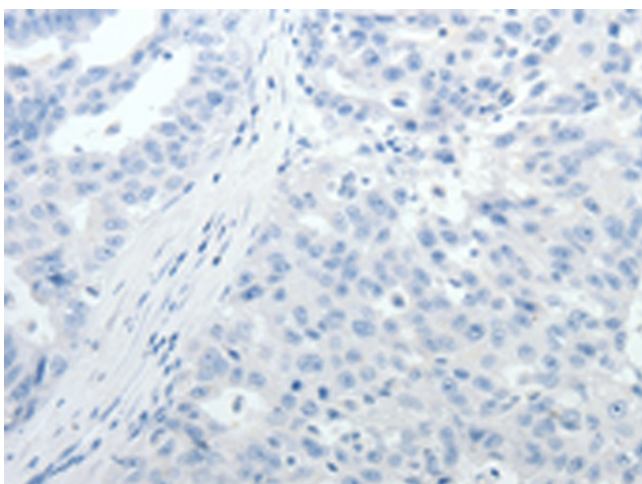
Product Type:	Primary Antibodies
Applications:	IHC
Recommended Dilution:	IHC: 15-50 Positive control: Human ovarian cancer Predicted cell location: Cytoplasm
Reactivity:	Human
Host:	Rabbit
Isotype:	IgG
Clonality:	Polyclonal
Immunogen:	Synthetic peptide corresponding to a region derived from 503-517 amino acids of human tyrosine hydroxylase
Formulation:	PBS pH7.3, 0.05% NaN ₃ , 50% glycerol
Purification:	Antigen affinity purification
Conjugation:	Unconjugated
Storage:	Store at -20°C as received.
Stability:	Stable for 12 months from date of receipt.
Gene Name:	tyrosine hydroxylase
Database Link:	NP_000351 Entrez Gene 7054 Human P07101
Background:	The protein encoded by this gene is involved in the conversion of tyrosine to dopamine. It is the rate-limiting enzyme in the synthesis of catecholamines; hence plays a key role in the physiology of adrenergic neurons. Mutations in this gene have been associated with autosomal recessive Segawa syndrome. Alternatively spliced transcript variants encoding different isoforms have been noted for this gene.
Synonyms:	DYT5b; DYT14; TYH
Protein Families:	Druggable Genome
Protein Pathways:	Metabolic pathways, Parkinson's disease, Tyrosine metabolism



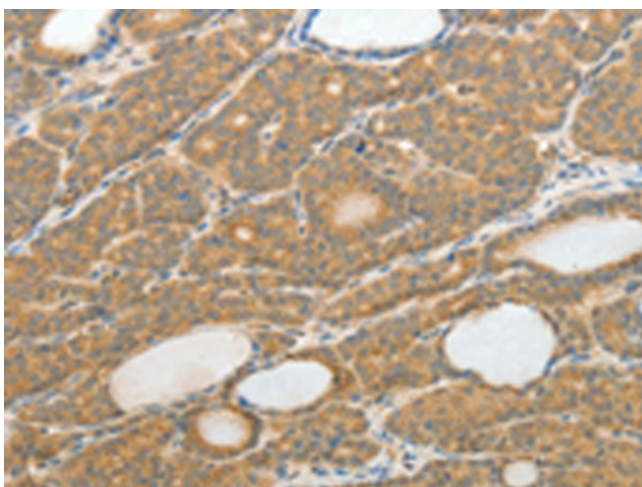
[View online »](#)

Product images:

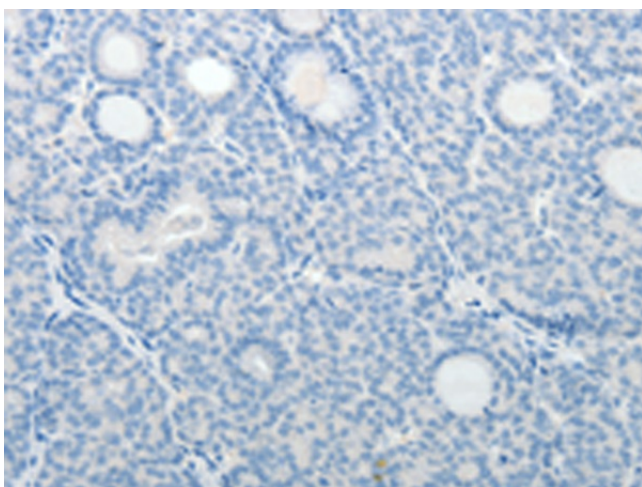
Immunohistochemistry of paraffin-embedded Human ovarian cancer tissue using [TA323694] (TH Antibody) at dilution 1/10 (Original magnification: $\times 200$)



Immunohistochemistry of paraffin-embedded Human ovarian cancer tissue using [TA323694] (TH Antibody) at dilution 1/10, treated with synthetic peptide. (Original magnification: $\times 200$)



Immunohistochemistry of paraffin-embedded Human thyroid cancer tissue using [TA323694] (TH Antibody) at dilution 1/10 (Original magnification: $\times 200$)



Immunohistochemistry of paraffin-embedded Human thyroid cancer tissue using [TA323694] (TH Antibody) at dilution 1/10, treated with synthetic peptide. (Original magnification: $\times 200$)