

Product datasheet for **TA323692**

Tyrosine Hydroxylase (TH) Rabbit Polyclonal Antibody

Product data:

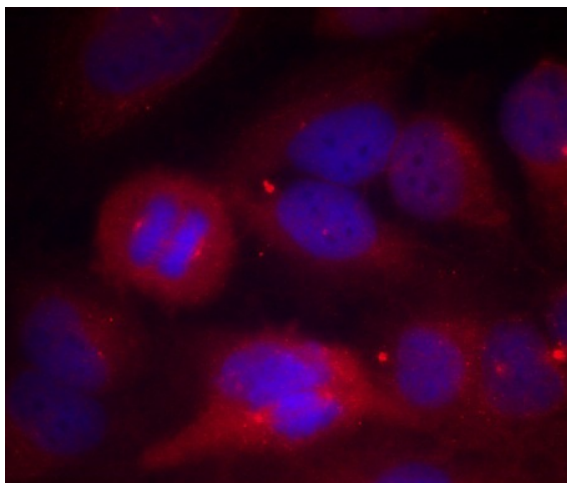
Product Type:	Primary Antibodies
Applications:	IF
Recommended Dilution:	ELISA: IF
Reactivity:	Human, Mouse, Rat
Modifications:	Phospho-specific
Host:	Rabbit
Isotype:	IgG
Clonality:	Polyclonal
Immunogen:	Peptide sequence around phosphorylation site of serine 40 (R-Q-S(p)-L-I) derived from Human Tyrosine Hydroxylase (TH).
Formulation:	PBS pH7.3, 0.05% NaN ₃ , 50% glycerol
Concentration:	lot specific
Purification:	Antigen affinity purification
Conjugation:	Unconjugated
Storage:	Store at -20°C as received.
Stability:	Stable for 12 months from date of receipt.
Gene Name:	tyrosine hydroxylase
Database Link:	NP_000351 Entrez Gene 21823 Mouse Entrez Gene 25085 Rat Entrez Gene 7054 Human P07101
Background:	The protein encoded by Tyrosine Hydroxylase is involved in the conversion of tyrosine to dopamine. It is the rate-limiting enzyme in the synthesis of catecholamines, hence plays a key role in the physiology of adrenergic neurons. Mutations in this gene have been associated with autosomal recessive Segawa syndrome. Alternatively spliced transcript variants encoding different isoforms have been noted for this gene.
Synonyms:	DYT5b; DYT14; TYH
Protein Families:	Druggable Genome



[View online »](#)

Protein Pathways: Metabolic pathways, Parkinson's disease, Tyrosine metabolism

Product images:



Predicted cell location: Cytoplasm. Positive control: HeLa cells. Recommended dilution: 1/100-200. The image is immunofluorescence of methanol-fixed HeLa cells using TH (Phospho-Ser40) antibody at dilution 1/100. (Original magnification: ×200)