

## Product datasheet for **TA323690**

### TGM1 Rabbit Polyclonal Antibody

#### Product data:

Product Type:	Primary Antibodies
Applications:	IHC
Recommended Dilution:	IHC: 25-100 Positive control: Human cervical cancer Predicted cell location: Membrane
Reactivity:	Human
Host:	Rabbit
Isotype:	IgG
Clonality:	Polyclonal
Immunogen:	Synthetic peptide corresponding to a region derived from 72-85 amino acids of human transglutaminase 1 (K polypeptide epidermal type I, protein-glutamine-gamma-glutamyltransferase)
Formulation:	PBS pH7.3, 0.05% NaN <sub>3</sub> , 50% glycerol
Concentration:	lot specific
Purification:	Antigen affinity purification
Conjugation:	Unconjugated
Storage:	Store at -20°C as received.
Stability:	Stable for 12 months from date of receipt.
Gene Name:	transglutaminase 1
Database Link:	<a href="#">NP_000350</a> <a href="#">Entrez Gene 7051 Human P22735</a>
Background:	The protein encoded by this gene is a membrane protein that catalyzes the addition of an alkyl group from an alkylamine to a glutamine residue of a protein; forming an alkylglutamine in the protein. This protein alkylation leads to crosslinking of proteins and catenation of polyamines to proteins. This gene contains either one or two copies of a 22 nt repeat unit in its 3' UTR. Mutations in this gene have been associated with autosomal recessive lamellar ichthyosis (LI) and nonbullous congenital ichthyosiform erythroderma (NCIE).

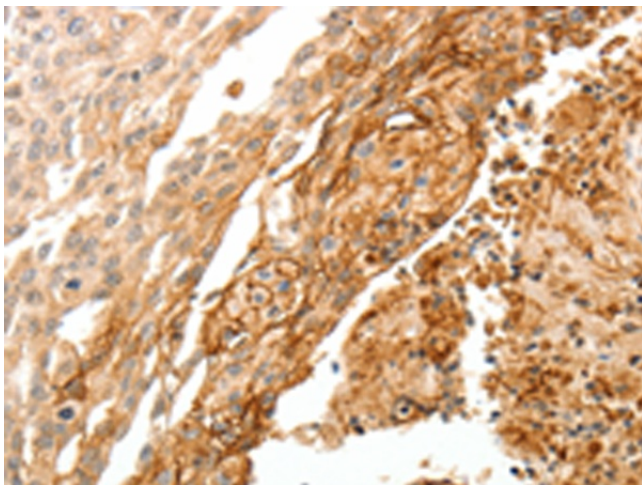


[View online »](#)

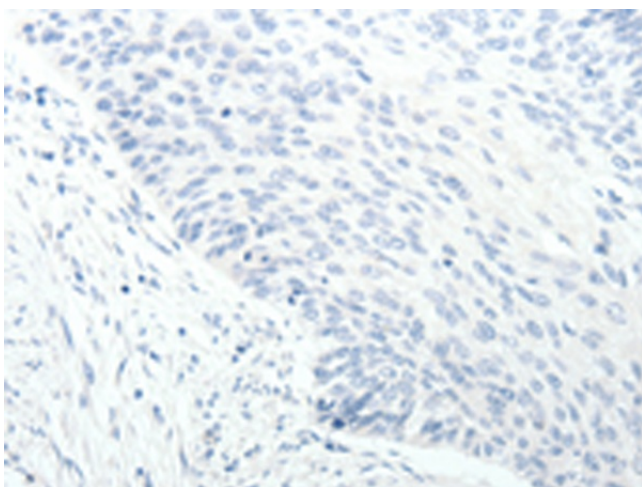
Synonyms: ARCI1; ICR2; KTG; LI; LI1; TGASE; TGK

Protein Families: Druggable Genome

### Product images:



Immunohistochemistry of paraffin-embedded Human cervical cancer tissue using TA323690 (TGM1 Antibody) at dilution 1/30 (Original magnification:  $\times 200$ )



Immunohistochemistry of paraffin-embedded Human cervical cancer tissue using TA323690 (TGM1 Antibody) at dilution 1/30, treated with synthetic peptide. (Original magnification:  $\times 200$ )