

Product datasheet for **TA323688**

TAT Rabbit Polyclonal Antibody

Product data:

Product Type:	Primary Antibodies
Applications:	IHC, WB
Recommended Dilution:	WB: 200-1000 WB positive control: Human normal liver tissue IHC: 25-100 Positive control: Human colon cancer Predicted cell location: Cytoplasm
Reactivity:	Human, Mouse, Rat
Host:	Rabbit
Isotype:	IgG
Clonality:	Polyclonal
Immunogen:	Fusion protein corresponding to a region derived from C terminal 250 amino acids of human tyrosine aminotransferase
Formulation:	PBS pH7.3, 0.05% NaN ₃ , 50% glycerol
Concentration:	lot specific
Purification:	Antigen affinity purification
Conjugation:	Unconjugated
Storage:	Store at -20°C as received.
Stability:	Stable for 12 months from date of receipt.
Gene Name:	tyrosine aminotransferase
Database Link:	NP_000344 Entrez Gene 24813 Rat Entrez Gene 234724 Mouse Entrez Gene 6898 Human P17735

Background: This nuclear gene encodes a mitochondrial protein tyrosine aminotransferase which is present in the liver and catalyzes the conversion of L-tyrosine into p-hydroxyphenylpyruvate. Mutations in this gene cause tyrosinemia (type II; Richner-Hanhart syndrome); a disorder accompanied by major skin and corneal lesions; with possible mental retardation. A regulator gene for tyrosine aminotransferase is X-linked.



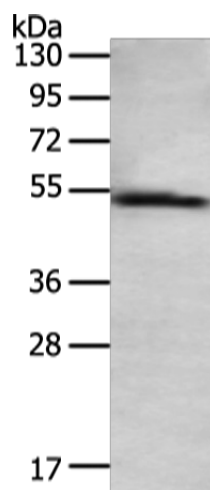
[View online »](#)

Synonyms: cytosolic; tyrosine aminotransferase

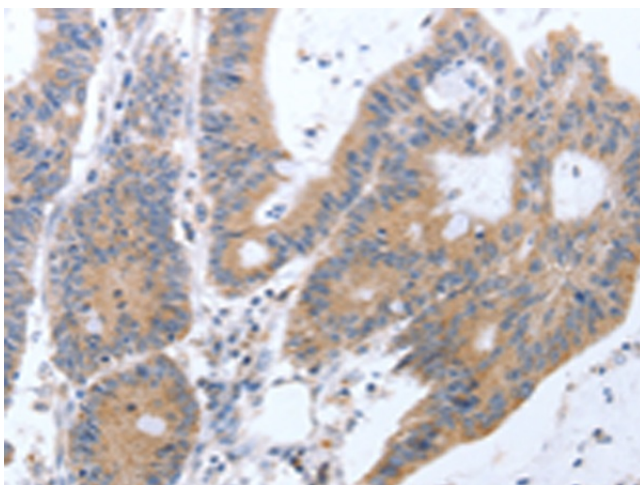
Protein Families: Druggable Genome, Embryonic stem cells, ES Cell Differentiation/IPS

Protein Pathways: Cysteine and methionine metabolism, Metabolic pathways, Phenylalanine, tyrosine and tryptophan biosynthesis, Phenylalanine metabolism, Tyrosine metabolism, Ubiquinone and other terpenoid-quinone biosynthesis

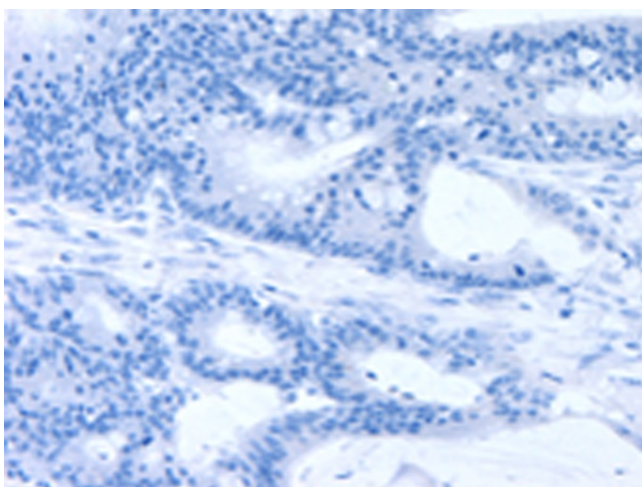
Product images:



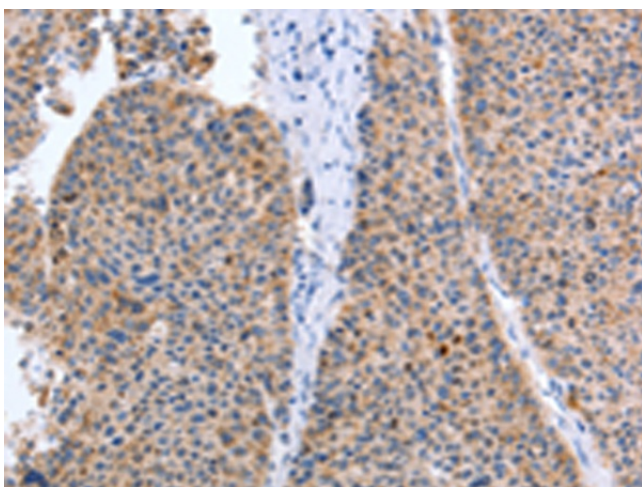
Gel: 8%SDS-PAGE
Lysate: 40 µg
Lane: Human normal liver tissue
Primary antibody: TA323688 (TAT Antibody) at dilution 1/200
Secondary antibody: Goat anti rabbit IgG at 1/8000 dilution
Exposure time: 3 minutes



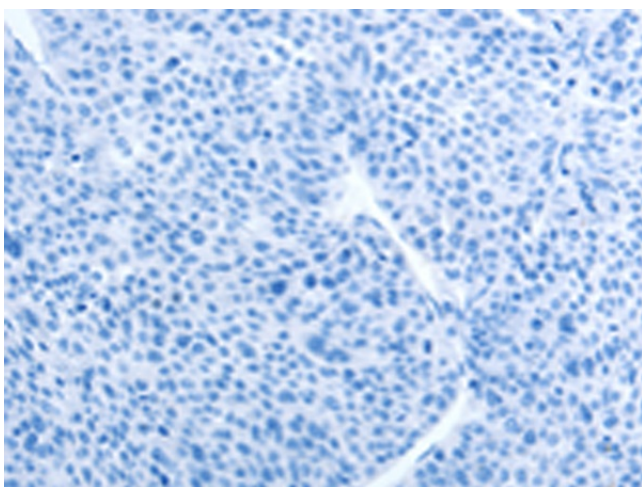
Immunohistochemistry of paraffin-embedded Human colon cancer tissue using TA323688 (TAT Antibody) at dilution 1/35 (Original magnification: ×200)



Immunohistochemistry of paraffin-embedded Human colon cancer tissue using TA323688 (TAT Antibody) at dilution 1/35, treated with fusion protein. (Original magnification: ×200)



Immunohistochemistry of paraffin-embedded Human liver cancer tissue using TA323688 (TAT Antibody) at dilution 1/35 (Original magnification: ×200)



Immunohistochemistry of paraffin-embedded Human liver cancer tissue using TA323688 (TAT Antibody) at dilution 1/35, treated with fusion protein. (Original magnification: ×200)