

Product datasheet for **TA323687**

ABCA4 Rabbit Polyclonal Antibody

Product data:

Product Type:	Primary Antibodies
Applications:	IHC
Recommended Dilution:	IHC: 50-200 Positive control: Human cervical cancer Predicted cell location: Membrane, Cytoplasm
Reactivity:	Human
Host:	Rabbit
Isotype:	IgG
Clonality:	Polyclonal
Immunogen:	Synthetic peptide corresponding to a region derived from 2260-2273 amino acids of human ATP-binding cassette, sub-family A (ABC1), member 4
Formulation:	PBS pH7.3, 0.05% NaN ₃ , 50% glycerol
Concentration:	lot specific
Purification:	Antigen affinity purification
Conjugation:	Unconjugated
Storage:	Store at -20°C as received.
Stability:	Stable for 12 months from date of receipt.
Gene Name:	ATP binding cassette subfamily A member 4
Database Link:	NP_000341 Entrez Gene 24 Human P78363



[View online »](#)

Background:

The membrane-associated protein encoded by this gene is a member of the superfamily of ATP-binding cassette (ABC) transporters. ABC proteins transport various molecules across extra- and intracellular membranes. ABC genes are divided into seven distinct subfamilies (ABC1; MDR/TAP; MRP; ALD; OABP; GCN20; White). This protein is a member of the ABC1 subfamily. Members of the ABC1 subfamily comprise the only major ABC subfamily found exclusively in multicellular eukaryotes. This protein is a retina-specific ABC transporter with N-retinylidene-PE as a substrate. It is expressed exclusively in retina photoreceptor cells; indicating the gene product mediates transport of an essential molecule across the photoreceptor cell membrane. Mutations in this gene are found in patients diagnosed with Stargardt disease; a form of juvenile-onset macular degeneration. Mutations in this gene are also associated with retinitis pigmentosa-19; cone-rod dystrophy type 3; early-onset severe retinal dystrophy; fundus flavimaculatus; and macular degeneration age-related 2.

Synonyms:

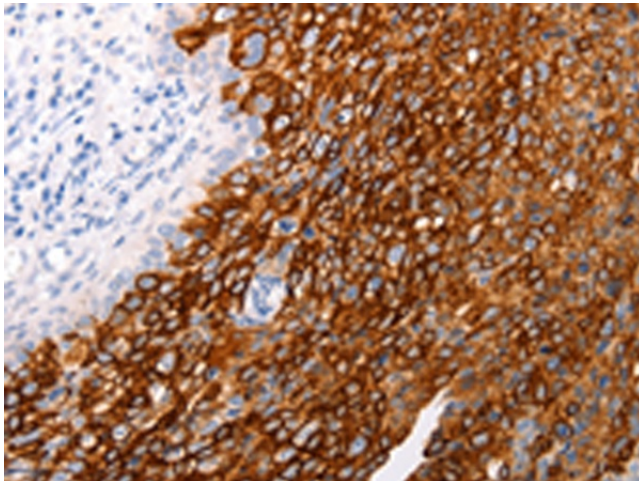
ABC10; ABCR; ARMD2; CORD3; FFM; RMP; RP19; STGD; STGD1

Protein Families:

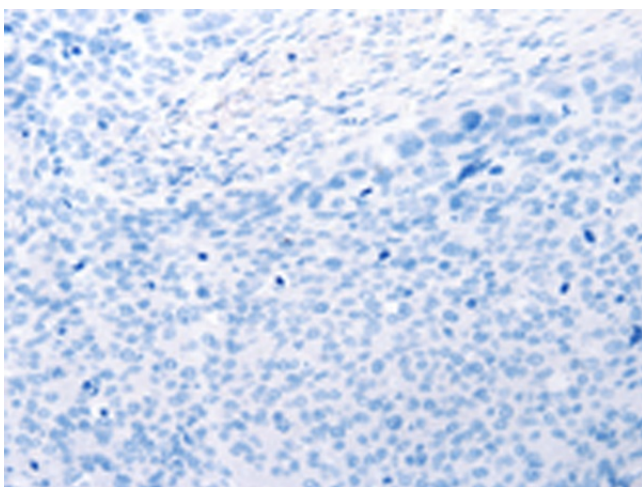
Druggable Genome, Transmembrane

Protein Pathways:

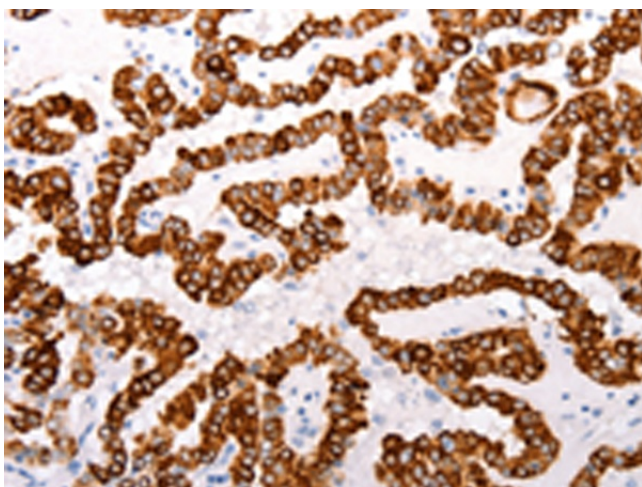
ABC transporters

Product images:

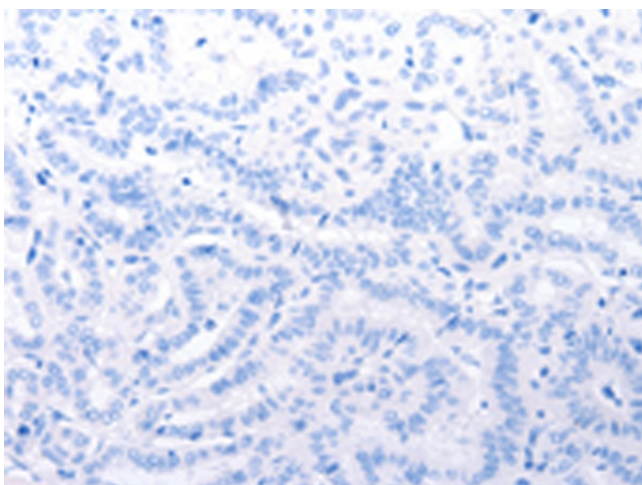
Immunohistochemistry of paraffin-embedded Human cervical cancer tissue using TA323687 (ABCA4 Antibody) at dilution 1/25 (Original magnification: $\times 200$)



Immunohistochemistry of paraffin-embedded Human cervical cancer tissue using TA323687 (ABCA4 Antibody) at dilution 1/25, treated with synthetic peptide. (Original magnification: $\times 200$)



Immunohistochemistry of paraffin-embedded Human thyroid cancer tissue using TA323687 (ABCA4 Antibody) at dilution 1/25 (Original magnification: $\times 200$)



Immunohistochemistry of paraffin-embedded Human thyroid cancer tissue using TA323687 (ABCA4 Antibody) at dilution 1/25, treated with synthetic peptide. (Original magnification: $\times 200$)