

## Product datasheet for **TA323684S**

### TPM1 Rabbit Polyclonal Antibody

#### Product data:

|                         |   |
|-------------------------|---|
| Product Type:           | Primary Antibodies  |
| Applications:           | IHC, WB   |
| Recommended Dilution:   | WB: 1000-5000<br>WB positive control: Mouse heart tissue<br>IHC: 50-200<br>Positive control: Human breast cancer<br>Predicted cell location: Cytoplasm, cytoskeleton        |
| Reactivity:             | Human, Mouse, Rat   |
| Host:                   | Rabbit  |
| Isotype:                | IgG   |
| Clonality:              | Polyclonal  |
| Immunogen:              | Full length fusion protein  |
| Formulation:            | PBS pH7.3, 0.05% NaN <sub>3</sub> , 50% glycerol  |
| Purification:           | Antigen affinity purification   |
| Conjugation:            | Unconjugated  |
| Storage:                | Store at -20°C as received.   |
| Stability:              | Stable for 12 months from date of receipt.  |
| Predicted Protein Size: | 33 kDa  |
| Gene Name:              | tropomyosin 1 (alpha)   |
| Database Link:          | <a href="#">NP_000357</a><br><a href="#">Entrez Gene 22003 Mouse</a> <a href="#">Entrez Gene 24851 Rat</a> <a href="#">Entrez Gene 7168 Human</a><br><a href="#">P09493</a> |



[View online »](#)

**Background:**

This gene is a member of the tropomyosin family of highly conserved; widely distributed actin-binding proteins involved in the contractile system of striated and smooth muscles and the cytoskeleton of non-muscle cells. Tropomyosin is composed of two alpha-helical chains arranged as a coiled-coil. It is polymerized end to end along the two grooves of actin filaments and provides stability to the filaments. The encoded protein is one type of alpha helical chain that forms the predominant tropomyosin of striated muscle; where it also functions in association with the troponin complex to regulate the calcium-dependent interaction of actin and myosin during muscle contraction. In smooth muscle and non-muscle cells; alternatively spliced transcript variants encoding a range of isoforms have been described. Mutations in this gene are associated with type 3 familial hypertrophic cardiomyopathy.?

**Synonyms:**

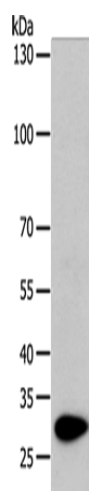
C15orf13; CMD1Y; CMH3; HEL-S-265; HTM-alpha; LVNC9; TMSA

**Protein Families:**

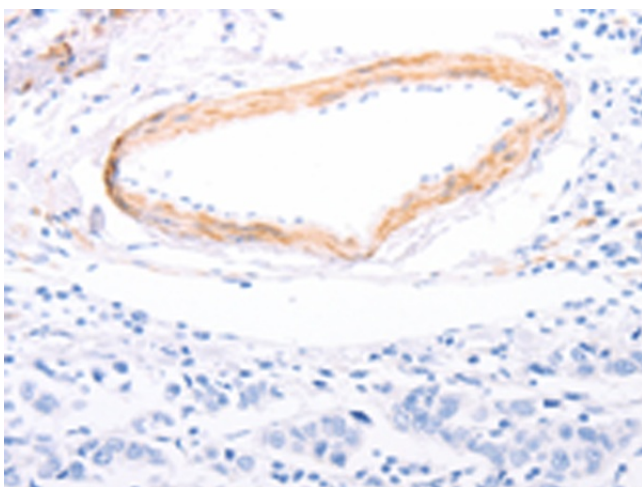
Druggable Genome

**Protein Pathways:**

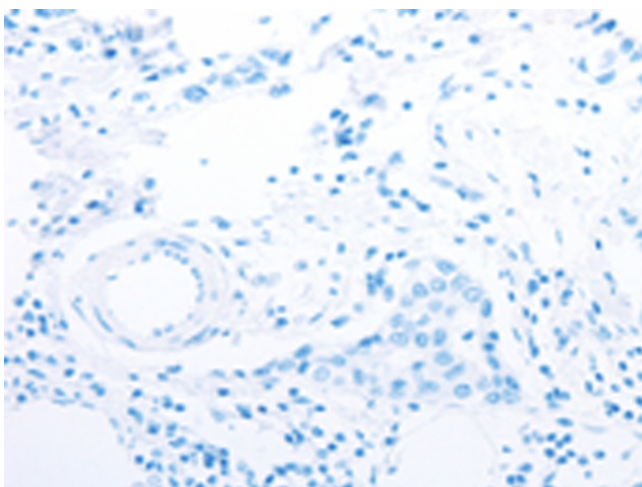
Cardiac muscle contraction, Dilated cardiomyopathy, Hypertrophic cardiomyopathy (HCM)

**Product images:**

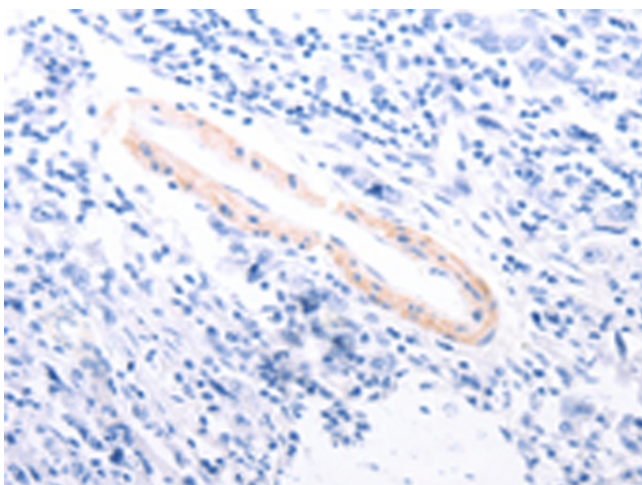
Gel: 12%SDS-PAGE  
Lysate: 50 µg  
Lane: Mouse heart tissue  
Primary antibody: [TA323684] (TPM1 Antibody) at dilution 1/1000  
Secondary antibody: Goat anti rabbit IgG at 1/8000 dilution  
Exposure time: 1 minute



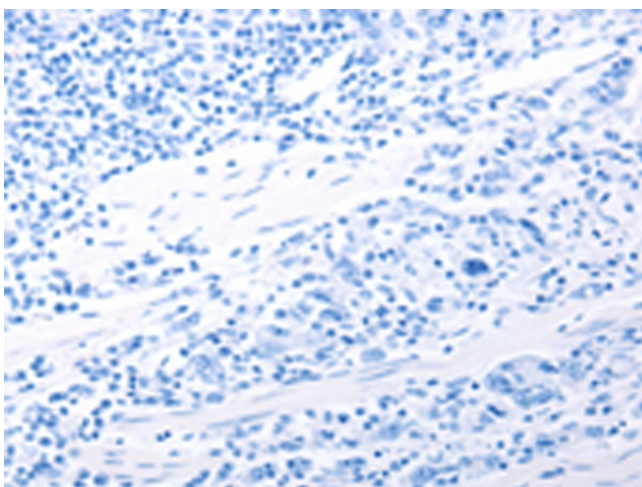
Immunohistochemistry of paraffin-embedded Human breast cancer tissue using [TA323684] (TPM1 Antibody) at dilution 1/80 (Original magnification:  $\times 200$ )



Immunohistochemistry of paraffin-embedded Human breast cancer tissue using [TA323684] (TPM1 Antibody) at dilution 1/80, treated with fusion protein. (Original magnification:  $\times 200$ )



Immunohistochemistry of paraffin-embedded Human gastric cancer tissue using [TA323684] (TPM1 Antibody) at dilution 1/80 (Original magnification:  $\times 200$ )



Immunohistochemistry of paraffin-embedded Human gastric cancer tissue using [TA323684] (TPM1 Antibody) at dilution 1/80, treated with fusion protein. (Original magnification:  $\times 200$ )