

## Product datasheet for **TA323683**

### TPM1 Rabbit Polyclonal Antibody

#### Product data:

Product Type:	Primary Antibodies
Applications:	IHC, WB
Recommended Dilution:	WB: 500-2000 WB positive control: Mouse heart and muscle tissue IHC: 50-200 Positive control: Human gastric cancer Predicted cell location: Cytoplasm, cytoskeleton
Reactivity:	Human, Mouse, Rat
Host:	Rabbit
Isotype:	IgG
Clonality:	Polyclonal
Immunogen:	Full length fusion protein
Formulation:	PBS pH7.3, 0.05% NaN <sub>3</sub> , 50% glycerol
Concentration:	lot specific
Purification:	Antigen affinity purification
Conjugation:	Unconjugated
Storage:	Store at -20°C as received.
Stability:	Stable for 12 months from date of receipt.
Predicted Protein Size:	33 kDa
Gene Name:	tropomyosin 1 (alpha)
Database Link:	<a href="#">NP_000357</a> <a href="#">Entrez Gene 22003 Mouse</a> <a href="#">Entrez Gene 24851 Rat</a> <a href="#">Entrez Gene 7168 Human</a> <a href="#">P09493</a>



[View online »](#)

**Background:**

This gene is a member of the tropomyosin family of highly conserved; widely distributed actin-binding proteins involved in the contractile system of striated and smooth muscles and the cytoskeleton of non-muscle cells. Tropomyosin is composed of two alpha-helical chains arranged as a coiled-coil. It is polymerized end to end along the two grooves of actin filaments and provides stability to the filaments. The encoded protein is one type of alpha helical chain that forms the predominant tropomyosin of striated muscle; where it also functions in association with the troponin complex to regulate the calcium-dependent interaction of actin and myosin during muscle contraction. In smooth muscle and non-muscle cells; alternatively spliced transcript variants encoding a range of isoforms have been described. Mutations in this gene are associated with type 3 familial hypertrophic cardiomyopathy.?

**Synonyms:**

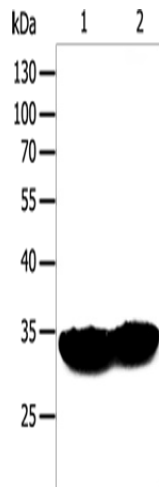
C15orf13; CMD1Y; CMH3; HEL-S-265; HTM-alpha; LVNC9; TMSA

**Protein Families:**

Druggable Genome

**Protein Pathways:**

Cardiac muscle contraction, Dilated cardiomyopathy, Hypertrophic cardiomyopathy (HCM)

**Product images:**

Gel: 12%SDS-PAGE

Lysate: 50 µg

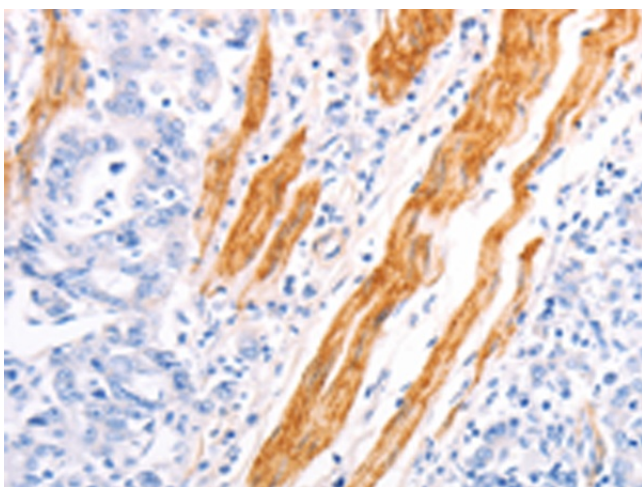
Lane 1-2: Mouse heart tissue

Mouse muscle tissue

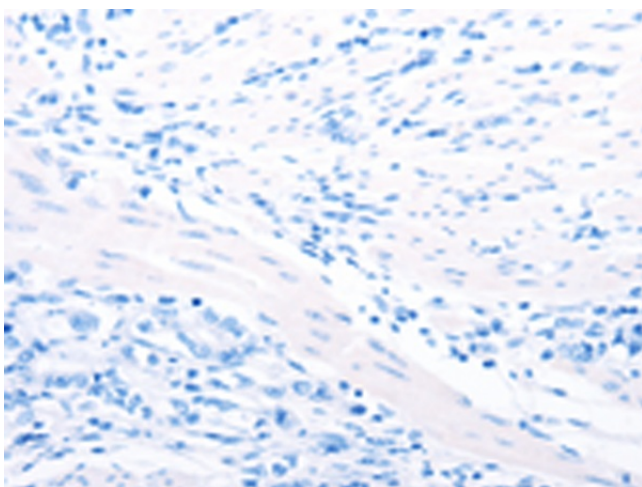
Primary antibody: TA323683 (TPM1 Antibody) at dilution 1/400

Secondary antibody: Goat anti rabbit IgG at 1/8000 dilution

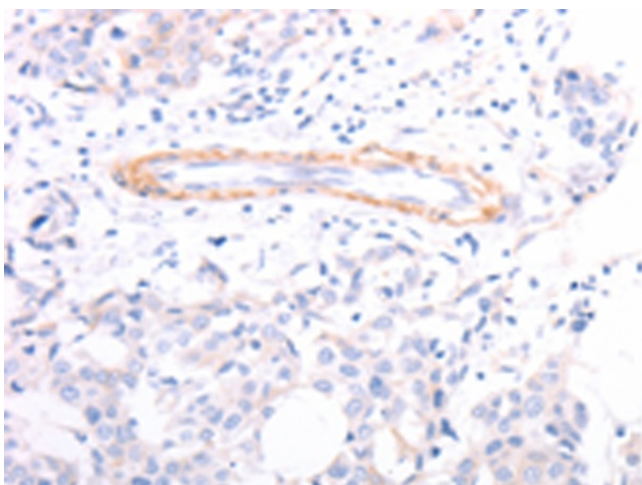
Exposure time: 30 seconds



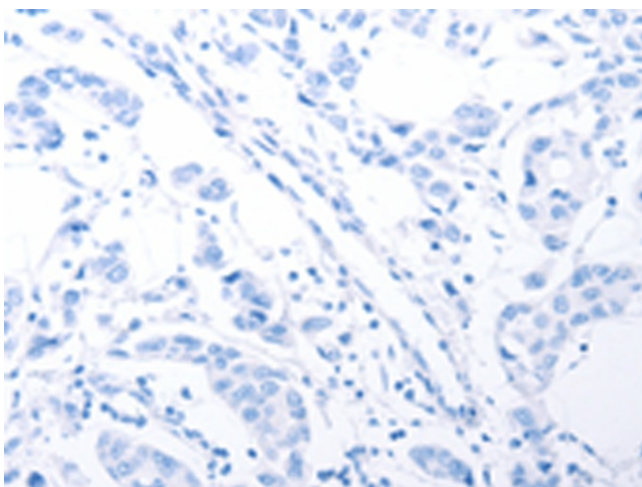
Immunohistochemistry of paraffin-embedded Human gastric cancer tissue using TA323683 (TPM1 Antibody) at dilution 1/40 (Original magnification:  $\times 200$ )



Immunohistochemistry of paraffin-embedded Human gastric cancer tissue using TA323683 (TPM1 Antibody) at dilution 1/40, treated with fusion protein. (Original magnification:  $\times 200$ )



Immunohistochemistry of paraffin-embedded Human breast cancer tissue using TA323683 (TPM1 Antibody) at dilution 1/40 (Original magnification:  $\times 200$ )



Immunohistochemistry of paraffin-embedded Human breast cancer tissue using TA323683 (TPM1 Antibody) at dilution 1/40, treated with fusion protein. (Original magnification: ×200)