

## Product datasheet for **TA323681**

### WASP (WAS) Rabbit Polyclonal Antibody

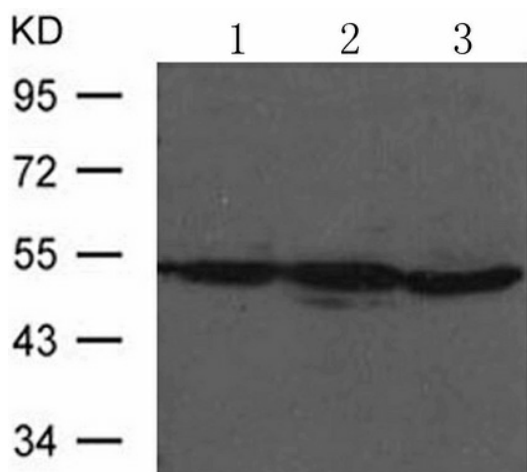
#### Product data:

Product Type:	Primary Antibodies
Applications:	WB
Recommended Dilution:	WB: 1:500-1000
Reactivity:	Human, Mouse, Rat
Host:	Rabbit
Isotype:	IgG
Clonality:	Polyclonal
Immunogen:	Peptide sequence around aa.289~293 (L-I-Y-D-F) derived from Human WASP.
Formulation:	PBS pH7.3, 0.05% NaN <sub>3</sub> , 50% glycerol
Concentration:	lot specific
Purification:	Antigen affinity purification
Conjugation:	Unconjugated
Storage:	Store at -20°C as received.
Stability:	Stable for 12 months from date of receipt.
Predicted Protein Size:	53 kDa
Gene Name:	Wiskott-Aldrich syndrome
Database Link:	<a href="#">NP_000368</a> <a href="#">Entrez Gene 22376 MouseEntrez Gene 317371 RatEntrez Gene 7454 Human P42768</a>
Background:	Effector protein for Rho-type GTPases. Regulates actin filament reorganization via its interaction with the Arp2/3 complex. Important for efficient actin polymerization. Possible regulator of lymphocyte and platelet function. Mediates actin filament reorganization and the formation of actin pedestals upon infection by pathogenic bacteria.
Synonyms:	IMD2; SCNX; THC; THC1; WASP; WASPA
Protein Families:	Druggable Genome
Protein Pathways:	Adherens junction, Chemokine signaling pathway, Fc gamma R-mediated phagocytosis, Pathogenic Escherichia coli infection, Regulation of actin cytoskeleton



[View online »](#)

## Product images:



Predicted band size: 53 kDa. Positive control: HeLa, Jurkat and Raji cells lysate. Recommended dilution: 1/ 500-1000. (Gel: 10%SDS-PAGE Lane 1, 2, 3: HeLa, Jurkat and Raji cells lysate Lysates: 30 ug per lane Primary antibody: 1/500 dilution Secondary antibody: Goat anti Rabbit IgG - H&L (HRP) at 1/10000 dilution Exposure time: 1 minute)