

## Product datasheet for **TA323677S**

### Apolipoprotein B (APOB) Rabbit Polyclonal Antibody

#### Product data:

Product Type:	Primary Antibodies
Applications:	IHC
Recommended Dilution:	IHC: 15-50 Positive control: Human colon cancer Predicted cell location: Cytoplasm
Reactivity:	Human, Mouse, Rat
Host:	Rabbit
Isotype:	IgG
Clonality:	Polyclonal
Immunogen:	Synthetic peptide corresponding to a region derived from 2158-2177 amino acids of human apolipoprotein B (including Ag(x) antigen)
Formulation:	PBS pH7.3, 0.05% NaN <sub>3</sub> , 50% glycerol
Purification:	Antigen affinity purification
Conjugation:	Unconjugated
Storage:	Store at -20°C as received.
Stability:	Stable for 12 months from date of receipt.
Gene Name:	apolipoprotein B
Database Link:	<a href="#">NP_000375</a> <a href="#">Entrez Gene 54225 Rat</a> <a href="#">Entrez Gene 238055 Mouse</a> <a href="#">Entrez Gene 338 Human</a> <a href="#">P04114</a>



[View online »](#)

**Background:**

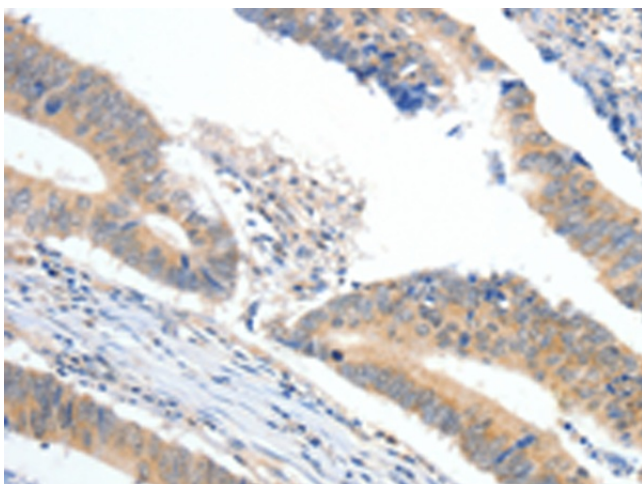
This gene product is the main apolipoprotein of chylomicrons and low density lipoproteins. It occurs in plasma as two main isoforms; apoB-48 and apoB-100: the former is synthesized exclusively in the gut and the latter in the liver. The intestinal and the hepatic forms of apoB are encoded by a single gene from a single; very long mRNA. The two isoforms share a common N-terminal sequence. The shorter apoB-48 protein is produced after RNA editing of the apoB-100 transcript at residue 2180 (CAA->UAA); resulting in the creation of a stop codon; and early translation termination. Mutations in this gene or its regulatory region cause hypobetalipoproteinemia; normotriglyceridemic hypobetalipoproteinemia; and hypercholesterolemia due to ligand-defective apoB; diseases affecting plasma cholesterol and apoB levels.

**Synonyms:**

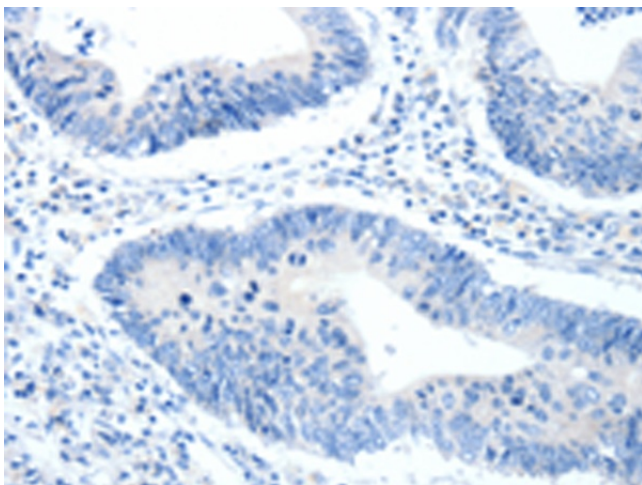
FLDB; LDLCQ4

**Protein Families:**

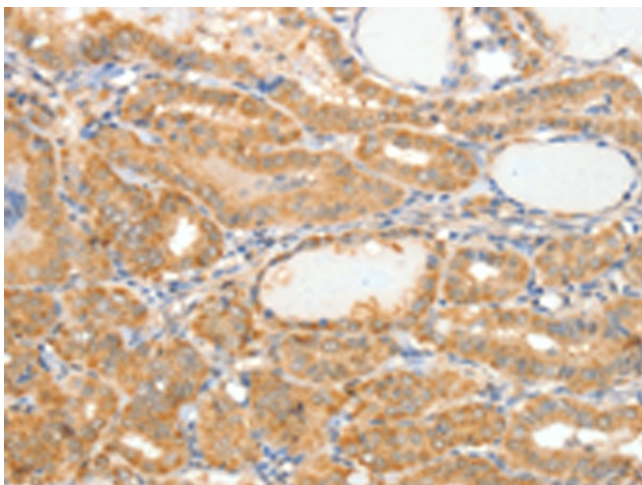
Druggable Genome, Transmembrane

**Product images:**

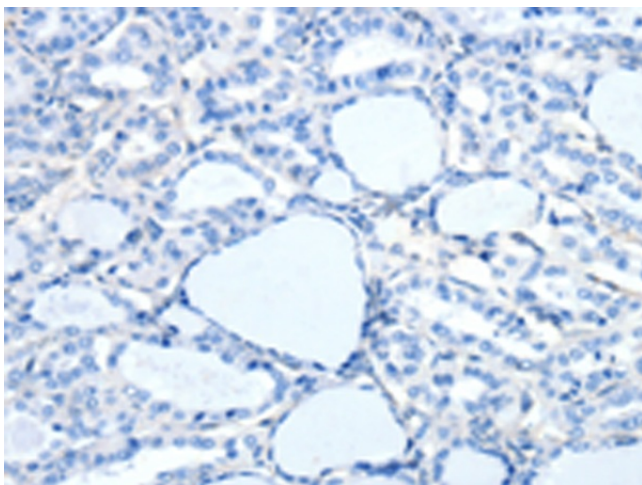
Immunohistochemistry of paraffin-embedded Human colon cancer tissue using [TA323677] (APOB Antibody) at dilution 1/10 (Original magnification: ×200)



Immunohistochemistry of paraffin-embedded Human colon cancer tissue using [TA323677] (APOB Antibody) at dilution 1/10, treated with synthetic peptide. (Original magnification:  $\times 200$ )



Immunohistochemistry of paraffin-embedded Human thyroid cancer tissue using [TA323677] (APOB Antibody) at dilution 1/10 (Original magnification:  $\times 200$ )



Immunohistochemistry of paraffin-embedded Human thyroid cancer tissue using [TA323677] (APOB Antibody) at dilution 1/10, treated with synthetic peptide. (Original magnification:  $\times 200$ )