

Product datasheet for **TA323676**

AIRE Rabbit Polyclonal Antibody

Product data:

Product Type:	Primary Antibodies
Applications:	WB
Recommended Dilution:	WB: 1:500-2000
Reactivity:	Human, Mouse, Rat
Host:	Rabbit
Isotype:	IgG
Clonality:	Polyclonal
Immunogen:	Synthetic peptide corresponding to a region derived from 79-92 amino acids of human autoimmune regulator
Formulation:	PBS pH7.3, 0.05% NaN ₃ , 50% glycerol
Concentration:	lot specific
Purification:	Antigen affinity purification
Conjugation:	Unconjugated
Storage:	Store at -20°C as received.
Stability:	Stable for 12 months from date of receipt.
Predicted Protein Size:	58 kDa
Gene Name:	autoimmune regulator
Database Link:	NP_000374 Entrez Gene 11634 MouseEntrez Gene 294328 RatEntrez Gene 326 Human O43918
Background:	This gene encodes a transcriptional regulator that forms nuclear bodies and interacts with the transcriptional coactivator CREB binding protein. The encoded protein plays an important role in immunity by regulating the expression of autoantigens and negative selection of autoreactive T-cells in the thymus. Mutations in this gene cause the rare autosomal-recessive systemic autoimmune disease termed autoimmune polyendocrinopathy with candidiasis and ectodermal dystrophy (APECED).
Synonyms:	AIRE1; APECED; APS1; APSI; PGA1

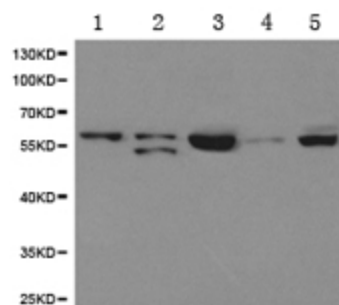


[View online »](#)

Protein Families: Druggable Genome

Protein Pathways: Primary immunodeficiency, Ubiquitin mediated proteolysis

Product images:



Predicted band size: 58 kDa. Positive control: MCF7, U937, HT29, OVCAR3 and SW620 cell lysate. Recommended dilution: 1/500-2000. (Gel: 10%SDS-PAGE Lane 1: MCF7 cell lysate Lane 2: U937 cell lysate Lane 3: HT29 cell lysate Lane 4: OVCAR3 cell lysate Lane 5: SW620 cell lysate Lysates: 40 ug per lane Primary antibody: 1/500 dilution Secondary antibody: Goat anti Rabbit IgG - H&L (HRP) at 1/10000 dilution Exposure time: 1 minute)