

Product datasheet for **TA323671**

p21 (CDKN1A) Rabbit Polyclonal Antibody

Product data:

Product Type:	Primary Antibodies
Applications:	IHC
Recommended Dilution:	IHC: 25-100 Positive control: Human breast cancer Predicted cell location: Nucleus
Reactivity:	Human
Host:	Rabbit
Isotype:	IgG
Clonality:	Polyclonal
Immunogen:	Fusion protein corresponding to a region derived from 6-149 amino acids of Human Cyclin-dependent kinase inhibitor 1
Formulation:	PBS pH7.3, 0.05% NaN ₃ , 50% glycerol
Concentration:	lot specific
Purification:	Antigen affinity purification
Conjugation:	Unconjugated
Storage:	Store at -20°C as received.
Stability:	Stable for 12 months from date of receipt.
Predicted Protein Size:	18 kDa
Gene Name:	cyclin-dependent kinase inhibitor 1A
Database Link:	NP_000380 Entrez Gene 1026 Human P38936



[View online »](#)

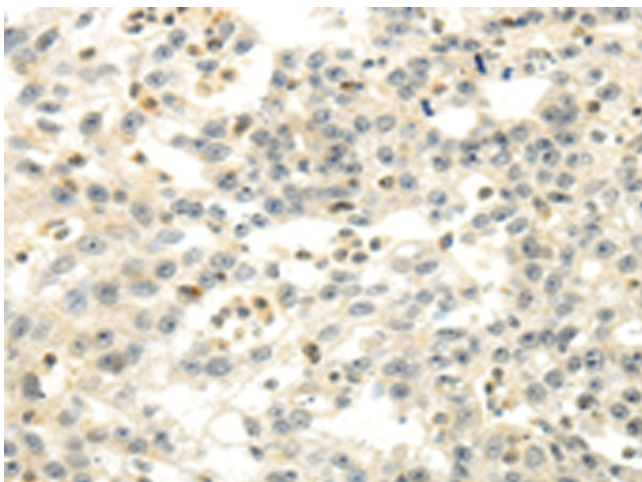
Background: This gene encodes a potent cyclin-dependent kinase inhibitor. The encoded protein binds to and inhibits the activity of cyclin-CDK2 or -CDK4 complexes; and thus functions as a regulator of cell cycle progression at G1. The expression of this gene is tightly controlled by the tumor suppressor protein p53; through which this protein mediates the p53-dependent cell cycle G1 phase arrest in response to a variety of stress stimuli. This protein can interact with proliferating cell nuclear antigen (PCNA); a DNA polymerase accessory factor; and plays a regulatory role in S phase DNA replication and DNA damage repair. This protein was reported to be specifically cleaved by CASP3-like caspases; which thus leads to a dramatic activation of CDK2; and may be instrumental in the execution of apoptosis following caspase activation. Multiple alternatively spliced variants have been found for this gene.

Synonyms: CAP20; CDKN1; CIP1; MDA-6; P21; p21CIP1; SDI1; WAF1

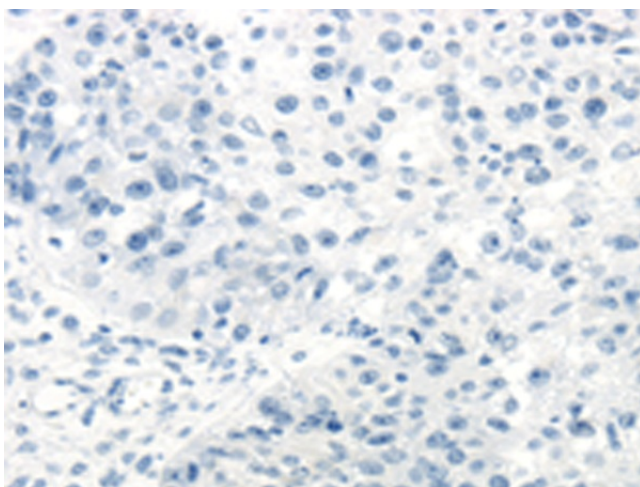
Protein Families: Druggable Genome

Protein Pathways: Bladder cancer, Cell cycle, Chronic myeloid leukemia, ErbB signaling pathway, Glioma, Melanoma, p53 signaling pathway, Pathways in cancer, Prostate cancer

Product images:



Immunohistochemistry of paraffin-embedded Human breast cancer tissue using TA323671 (CDKN1A Antibody) at dilution 1/30 (Original magnification: $\times 200$)



Immunohistochemistry of paraffin-embedded Human breast cancer tissue using TA323671 (CDKN1A Antibody) at dilution 1/30, treated with fusion protein. (Original magnification: ×200)