

Product datasheet for **TA323669**

IL2 Receptor alpha (IL2RA) Rabbit Polyclonal Antibody

Product data:

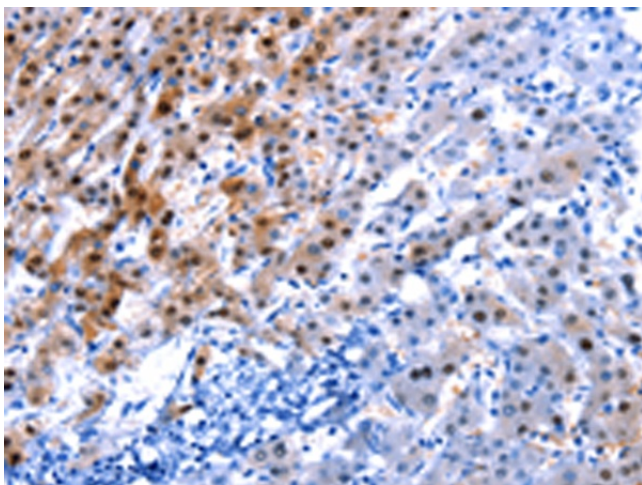
Product Type:	Primary Antibodies
Applications:	IHC
Recommended Dilution:	IHC: 25-100 Positive control: Human liver cancer Predicted cell location: Cytoplasm, Nucleus
Reactivity:	Human, Mouse, Rat
Host:	Rabbit
Isotype:	IgG
Clonality:	Polyclonal
Immunogen:	Synthetic peptide corresponding to a region derived from 260-272 amino acids of Human interleukin 2 receptor, alpha
Formulation:	PBS pH7.3, 0.05% NaN ₃ , 50% glycerol
Concentration:	lot specific
Purification:	Antigen affinity purification
Conjugation:	Unconjugated
Storage:	Store at -20°C as received.
Stability:	Stable for 12 months from date of receipt.
Gene Name:	interleukin 2 receptor subunit alpha
Database Link:	NP_000408 Entrez Gene 16184 Mouse Entrez Gene 25704 Rat Entrez Gene 3559 Human P01589

Background: The interleukin 2 (IL2) receptor alpha (IL2RA) and beta (IL2RB) chains; together with the common gamma chain (IL2RG); constitute the high-affinity IL2 receptor. Homodimeric alpha chains (IL2RA) result in low-affinity receptor; while homodimeric beta (IL2RB) chains produce a medium-affinity receptor. Normally an integral-membrane protein; soluble IL2RA has been isolated and determined to result from extracellular proteolysis. Alternately-spliced IL2RA mRNAs have been isolated; but the significance of each is presently unknown. Mutations in this gene are associated with interleukin 2 receptor alpha deficiency

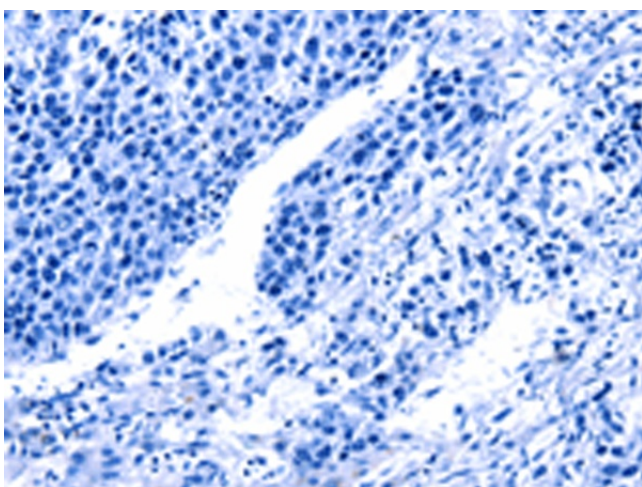


[View online »](#)

Synonyms:	CD25; IDDM10; IL2R; p55; TCGFR
Protein Families:	Druggable Genome, ES Cell Differentiation/IPS, Transmembrane
Protein Pathways:	Cytokine-cytokine receptor interaction, Endocytosis, Hematopoietic cell lineage, Jak-STAT signaling pathway

Product images:

Immunohistochemistry of paraffin-embedded Human liver cancer tissue using TA323669 (IL2RA Antibody) at dilution 1/30 (Original magnification: ×200)



Immunohistochemistry of paraffin-embedded Human liver cancer tissue using TA323669 (IL2RA Antibody) at dilution 1/30, treated with synthetic peptide. (Original magnification: ×200)