

## Product datasheet for **TA323667S**

### Cytokeratin 2 (KRT2) Rabbit Polyclonal Antibody

#### Product data:

Product Type:	Primary Antibodies
Applications:	IHC, WB
Recommended Dilution:	WB: 200-1000 WB positive control: Jurkat cells IHC: 25-100 Positive control: Human colon cancer Predicted cell location: Cytoplasm
Reactivity:	Human, Mouse
Host:	Rabbit
Isotype:	IgG
Clonality:	Polyclonal
Immunogen:	Fusion protein corresponding to a region derived from 233-487 amino acids of human keratin 2
Formulation:	PBS pH7.3, 0.05% NaN <sub>3</sub> , 50% glycerol
Purification:	Antigen affinity purification
Conjugation:	Unconjugated
Storage:	Store at -20°C as received.
Stability:	Stable for 12 months from date of receipt.
Predicted Protein Size:	65 kDa
Gene Name:	keratin 2
Database Link:	<a href="#">NP_000414</a> <a href="#">Entrez Gene 16681 Mouse</a> <a href="#">Entrez Gene 3849 Human</a> <a href="#">P35908</a>



[View online »](#)

**Background:**

The protein encoded by this gene is a member of the keratin gene family. The type II cytokeratins consist of basic or neutral proteins which are arranged in pairs of heterotypic keratin chains coexpressed during differentiation of simple and stratified epithelial tissues. This type II cytokeratin is expressed largely in the upper spinous layer of epidermal keratinocytes and mutations in this gene have been associated with bullous congenital ichthyosiform erythroderma. The type II cytokeratins are clustered in a region of chromosome 12q12-q13.

**Synonyms:**

CK-2e; K2e; KRT2A; KRT2E; KRTE

**Product images:**

Gel: 10%SDS-PAGE

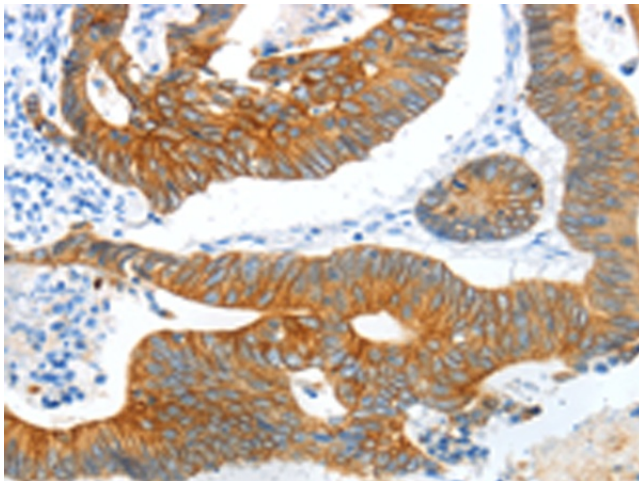
Lysate: 30 µg

Lane: Jurkat cells

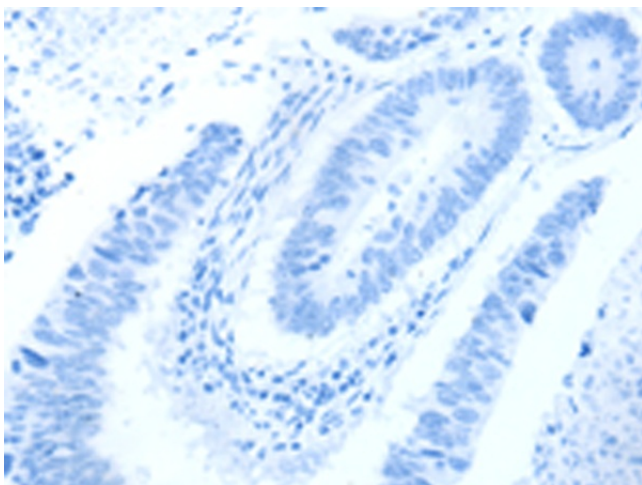
Primary antibody: [TA323667] (KRT2 Antibody) at dilution 1/450

Secondary antibody: Goat anti rabbit IgG at 1/8000 dilution

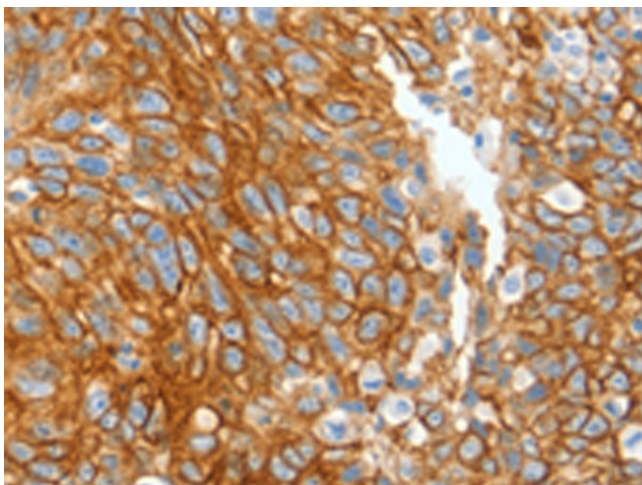
Exposure time: 45 seconds



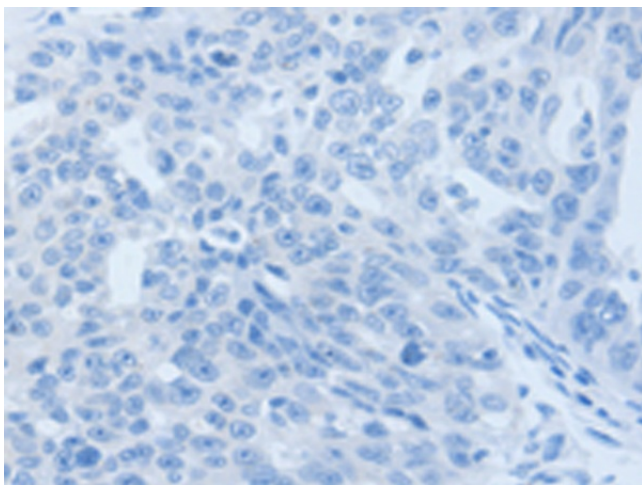
Immunohistochemistry of paraffin-embedded Human colon cancer tissue using [TA323667] (KRT2 Antibody) at dilution 1/20 (Original magnification: ×200)



Immunohistochemistry of paraffin-embedded Human colon cancer tissue using [TA323667] (KRT2 Antibody) at dilution 1/20, treated with fusion protein. (Original magnification:  $\times 200$ )



Immunohistochemistry of paraffin-embedded Human ovarian cancer tissue using [TA323667] (KRT2 Antibody) at dilution 1/20 (Original magnification:  $\times 200$ )



Immunohistochemistry of paraffin-embedded Human ovarian cancer tissue using [TA323667] (KRT2 Antibody) at dilution 1/20, treated with fusion protein. (Original magnification:  $\times 200$ )