

Product datasheet for **TA323666**

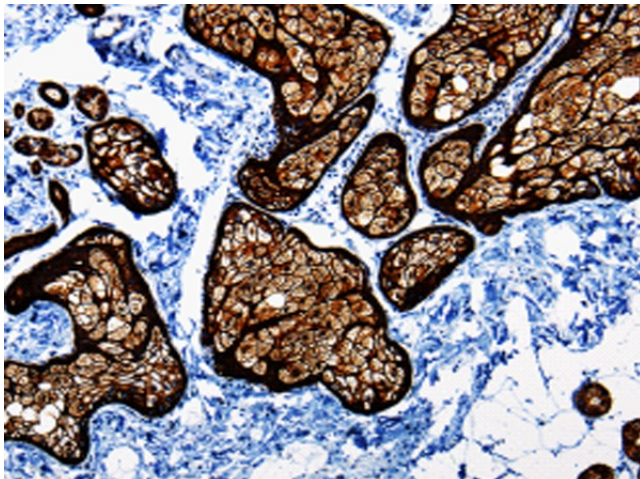
Cytokeratin 17 (KRT17) Rabbit Polyclonal Antibody

Product data:

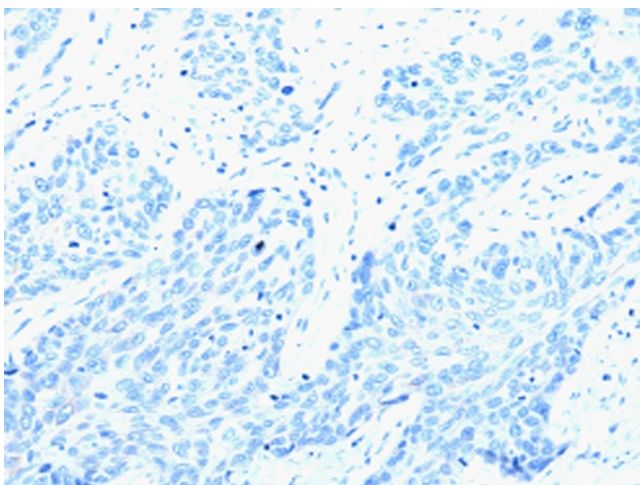
Product Type:	Primary Antibodies
Applications:	IHC
Recommended Dilution:	IHC: 25-100 Positive control: Human skin Predicted cell location: Cell membrane, Cytoplasm
Reactivity:	Human, Mouse, Rat
Host:	Rabbit
Isotype:	IgG
Clonality:	Polyclonal
Immunogen:	Fusion protein corresponding to a region derived from 102-346 amino acids of Human Keratin, type I cytoskeletal 17
Formulation:	PBS pH7.3, 0.05% NaN ₃ , 50% glycerol
Concentration:	lot specific
Purification:	Antigen affinity purification
Conjugation:	Unconjugated
Storage:	Store at -20°C as received.
Stability:	Stable for 12 months from date of receipt.
Gene Name:	keratin 17
Database Link:	NP_000413 Entrez Gene 16667 Mouse Entrez Gene 287702 Rat Entrez Gene 3872 Human Q04695
Background:	This gene encodes the type I intermediate filament chain keratin 17; expressed in nail bed; hair follicle; sebaceous glands; and other epidermal appendages. Mutations in this gene lead to Jackson-Lawler type pachyonychia congenita and steatocystoma multiplex.
Synonyms:	39.1; CK-17; K17; PC; PC2; PCHC1



[View online »](#)

Product images:

Immunohistochemistry of paraffin-embedded Human skin tissue using TA323666 (KRT17 Antibody) at dilution 1/30 (Original magnification: ×200)



Immunohistochemistry of paraffin-embedded Human skin tissue using TA323666 (KRT17 Antibody) at dilution 1/30, treated with fusion protein. (Original magnification: ×200)