

Product datasheet for **TA323662**

Cytokeratin 10 (KRT10) Rabbit Polyclonal Antibody

Product data:

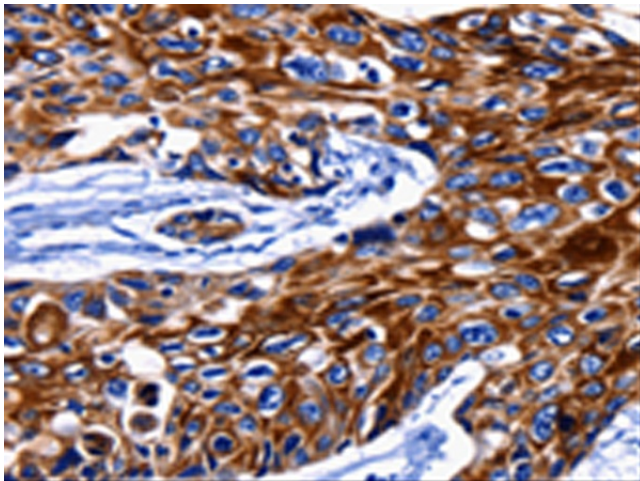
Product Type:	Primary Antibodies
Applications:	IHC
Recommended Dilution:	IHC: 25-100 Positive control: Human esophagus cancer Predicted cell location: Cytoplasm, Cell membrane
Reactivity:	Human, Mouse, Rat
Host:	Rabbit
Isotype:	IgG
Clonality:	Polyclonal
Immunogen:	Synthetic peptide corresponding to a region derived from 195-212 amino acids of Human Keratin, type I cytoskeletal 10
Formulation:	PBS pH7.3, 0.05% NaN ₃ , 50% glycerol
Concentration:	lot specific
Purification:	Antigen affinity purification
Conjugation:	Unconjugated
Storage:	Store at -20°C as received.
Stability:	Stable for 12 months from date of receipt.
Gene Name:	keratin 10
Database Link:	NP_000412 Entrez Gene 16661 MouseEntrez Gene 450225 RatEntrez Gene 3858 Human P13645

Background: This gene encodes a member of the type I (acidic) cytokeratin family; which belongs to the superfamily of intermediate filament (IF) proteins. Keratins are heteropolymeric structural proteins which form the intermediate filament. These filaments; along with actin microfilaments and microtubules; compose the cytoskeleton of epithelial cells. Mutations in this gene are associated with epidermolytic hyperkeratosis. This gene is located within a cluster of keratin family members on chromosome 17q21.

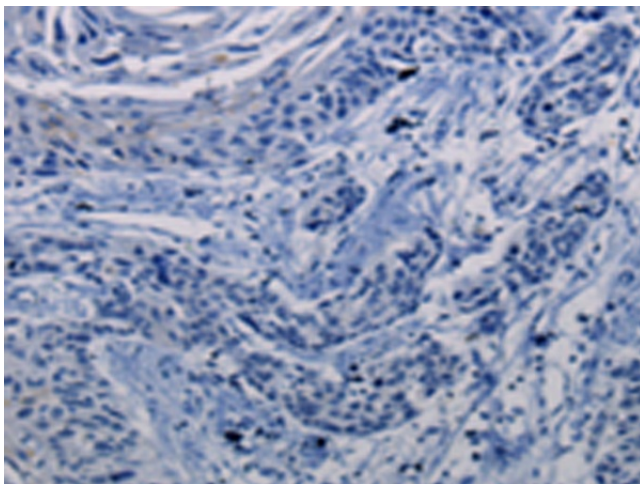
Synonyms: BCIE; BIE; CK10; EHK; K10; KPP



[View online »](#)

Product images:

Immunohistochemistry of paraffin-embedded Human esophagus cancer tissue using TA323662 (KRT10 Antibody) at dilution 1/25 (Original magnification: $\times 200$)



Immunohistochemistry of paraffin-embedded Human esophagus cancer tissue using TA323662 (KRT10 Antibody) at dilution 1/25, treated with synthetic peptide. (Original magnification: $\times 200$)