

## Product datasheet for **TA323659S**

### LIS1 (PAFAH1B1) Rabbit Polyclonal Antibody

#### Product data:

Product Type:	Primary Antibodies
Applications:	IHC
Recommended Dilution:	IHC: 25-100 Positive control: Human lung cancer Predicted cell location: Cytoplasm
Reactivity:	Human, Mouse, Rat
Host:	Rabbit
Isotype:	IgG
Clonality:	Polyclonal
Immunogen:	Synthetic peptide corresponding to a region derived from 61-74 amino acids of Human platelet-activating factor acetylhydrolase 1b, regulatory subunit 1 (45kDa)
Formulation:	PBS pH7.3, 0.05% NaN <sub>3</sub> , 50% glycerol
Purification:	Antigen affinity purification
Conjugation:	Unconjugated
Storage:	Store at -20°C as received.
Stability:	Stable for 12 months from date of receipt.
Gene Name:	platelet activating factor acetylhydrolase 1b regulatory subunit 1
Database Link:	<a href="#">NP_000421</a> <a href="#">Entrez Gene 18472 Mouse</a> <a href="#">Entrez Gene 83572 Rat</a> <a href="#">Entrez Gene 5048 Human</a> <a href="#">P43034</a>
Background:	This locus was identified as encoding a gene that when mutated or lost caused the lissencephaly associated with Miller-Dieker lissencephaly syndrome. This gene encodes the non-catalytic alpha subunit of the intracellular 1b isoform of platelet-activating factor acetylhydrolase; a heterotrimeric enzyme that specifically catalyzes the removal of the acetyl group at the SN-2 position of platelet-activating factor (identified as 1-O-alkyl-2-acetyl-sn-glycerol-3-phosphorylcholine). Two other isoforms of intracellular platelet-activating factor acetylhydrolase exist: one composed of multiple subunits; the other; a single subunit. In addition; a single-subunit isoform of this enzyme is found in serum.

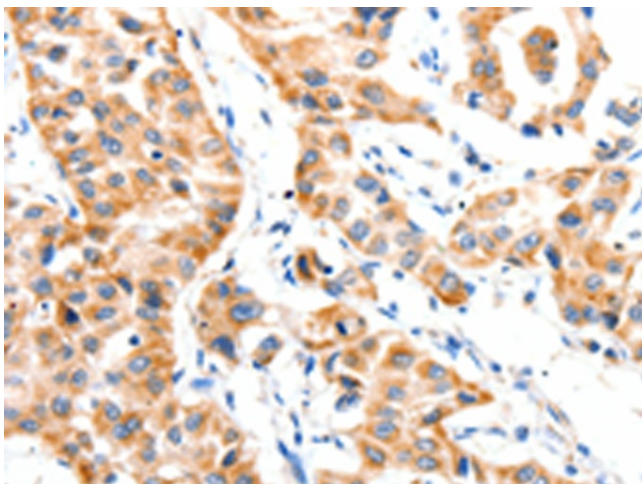


[View online »](#)

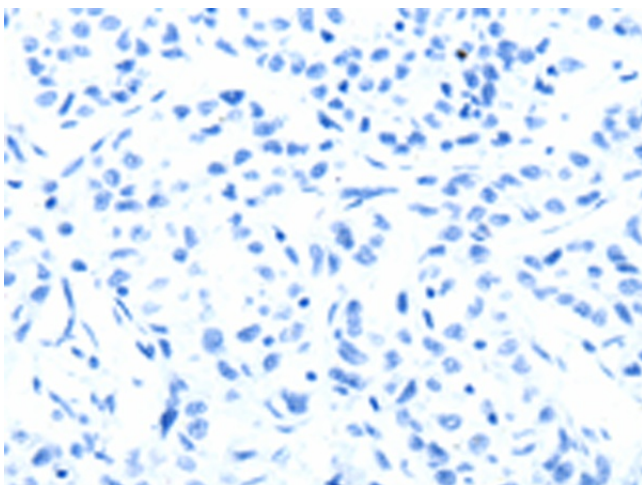
Synonyms: LIS1; LIS2; MDCR; MDS; NudF; PAFAH

Protein Pathways: Ether lipid metabolism, Metabolic pathways

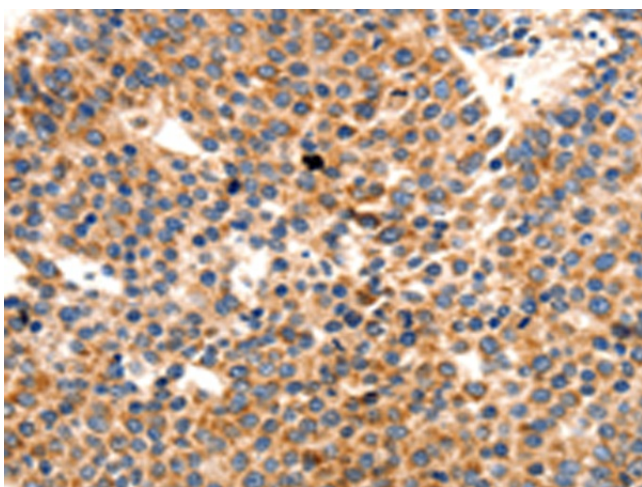
### Product images:



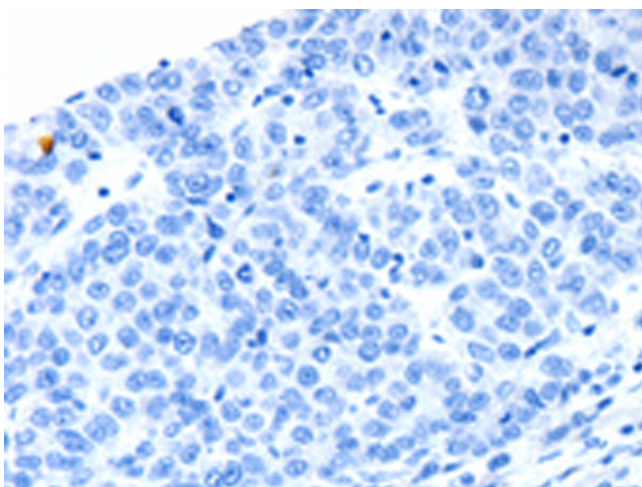
Immunohistochemistry of paraffin-embedded Human lung cancer tissue using [TA323659] (PAFAH1B1 Antibody) at dilution 1/25 (Original magnification: ×200)



Immunohistochemistry of paraffin-embedded Human lung cancer tissue using [TA323659] (PAFAH1B1 Antibody) at dilution 1/25, treated with synthetic peptide. (Original magnification: ×200)



Immunohistochemistry of paraffin-embedded Human liver cancer tissue using [TA323659] (PAFAH1B1 Antibody) at dilution 1/25 (Original magnification:  $\times 200$ )



Immunohistochemistry of paraffin-embedded Human liver cancer tissue using [TA323659] (PAFAH1B1 Antibody) at dilution 1/25, treated with synthetic peptide. (Original magnification:  $\times 200$ )