

Product datasheet for **TA323659**

LIS1 (PAFAH1B1) Rabbit Polyclonal Antibody

Product data:

Product Type:	Primary Antibodies
Applications:	IHC
Recommended Dilution:	IHC: 25-100 Positive control: Human lung cancer Predicted cell location: Cytoplasm
Reactivity:	Human, Mouse, Rat
Host:	Rabbit
Isotype:	IgG
Clonality:	Polyclonal
Immunogen:	Synthetic peptide corresponding to a region derived from 61-74 amino acids of Human platelet-activating factor acetylhydrolase 1b, regulatory subunit 1 (45kDa)
Formulation:	PBS pH7.3, 0.05% NaN ₃ , 50% glycerol
Concentration:	lot specific
Purification:	Antigen affinity purification
Conjugation:	Unconjugated
Storage:	Store at -20°C as received.
Stability:	Stable for 12 months from date of receipt.
Gene Name:	platelet activating factor acetylhydrolase 1b regulatory subunit 1
Database Link:	NP_000421 Entrez Gene 18472 Mouse Entrez Gene 83572 Rat Entrez Gene 5048 Human P43034



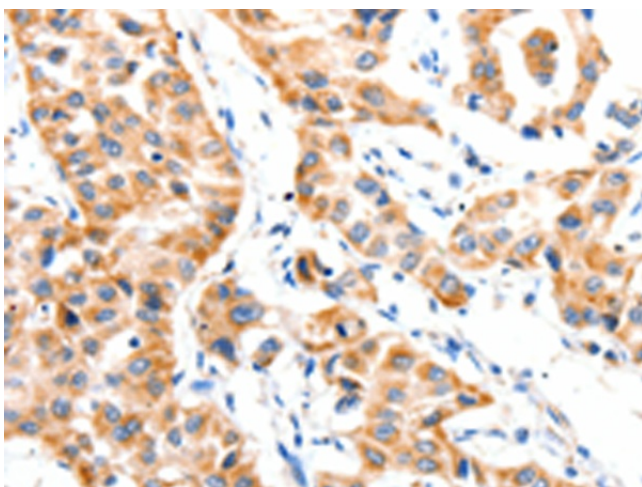
[View online »](#)

Background: This locus was identified as encoding a gene that when mutated or lost caused the lissencephaly associated with Miller-Dieker lissencephaly syndrome. This gene encodes the non-catalytic alpha subunit of the intracellular Ib isoform of platelet-activating factor acetylhydrolase; a heterotrimeric enzyme that specifically catalyzes the removal of the acetyl group at the SN-2 position of platelet-activating factor (identified as 1-O-alkyl-2-acetyl-sn-glycerol-3-phosphorylcholine). Two other isoforms of intracellular platelet-activating factor acetylhydrolase exist: one composed of multiple subunits; the other; a single subunit. In addition; a single-subunit isoform of this enzyme is found in serum.

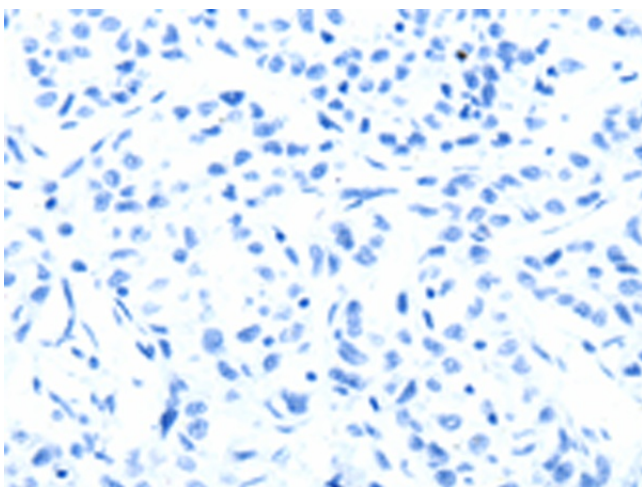
Synonyms: LIS1; LIS2; MDCR; MDS; NudF; PAFAH

Protein Pathways: Ether lipid metabolism, Metabolic pathways

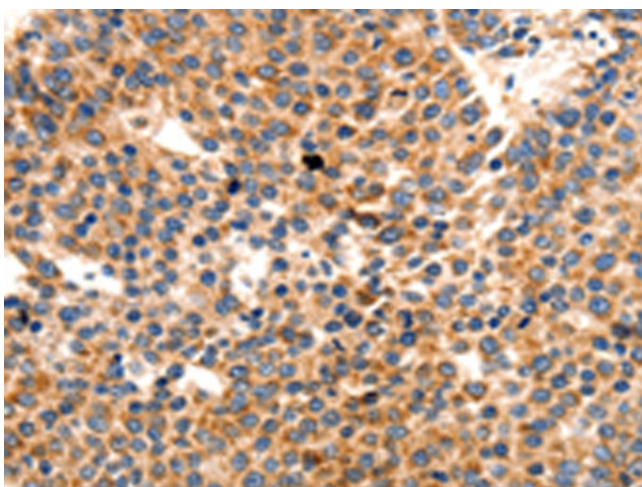
Product images:



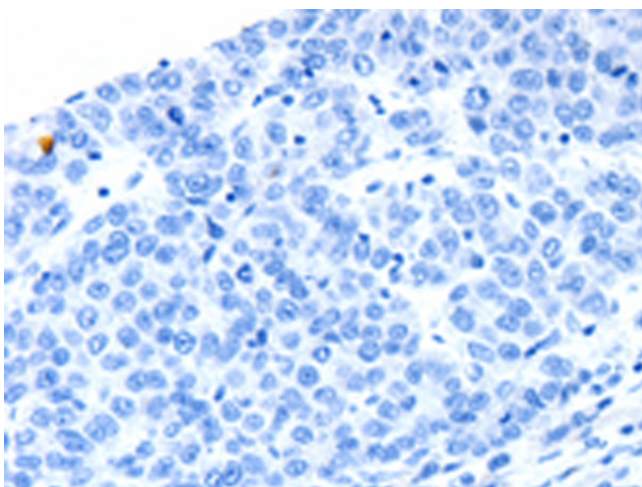
Immunohistochemistry of paraffin-embedded Human lung cancer tissue using TA323659 (PAFAH1B1 Antibody) at dilution 1/25 (Original magnification: $\times 200$)



Immunohistochemistry of paraffin-embedded Human lung cancer tissue using TA323659 (PAFAH1B1 Antibody) at dilution 1/25, treated with synthetic peptide. (Original magnification: $\times 200$)



Immunohistochemistry of paraffin-embedded Human liver cancer tissue using TA323659 (PAFAH1B1 Antibody) at dilution 1/25 (Original magnification: $\times 200$)



Immunohistochemistry of paraffin-embedded Human liver cancer tissue using TA323659 (PAFAH1B1 Antibody) at dilution 1/25, treated with synthetic peptide. (Original magnification: $\times 200$)