

## Product datasheet for **TA323649S**

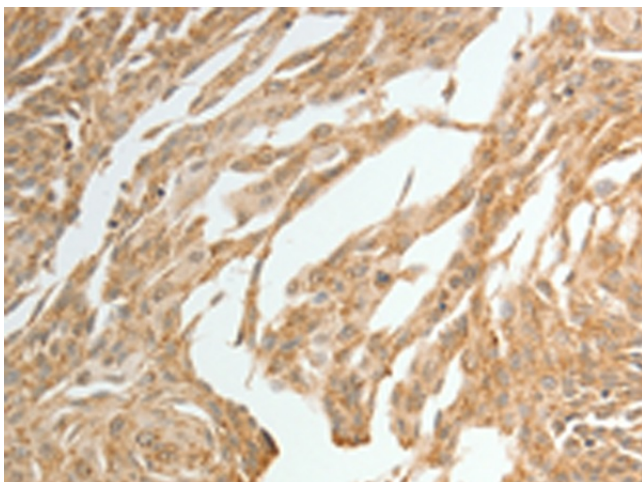
### Twist (TWIST1) Rabbit Polyclonal Antibody

#### Product data:

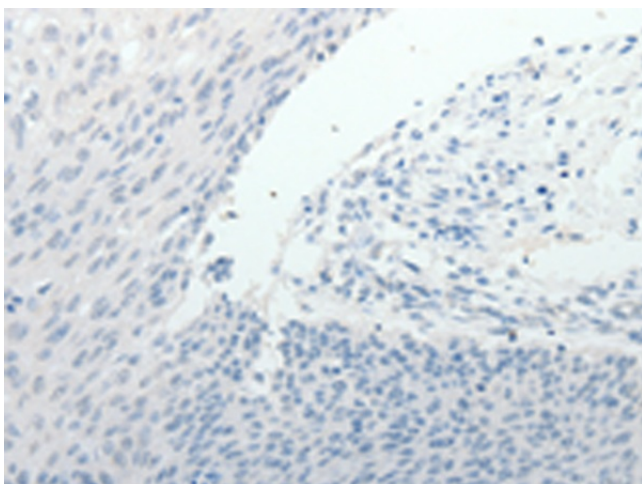
Product Type:	Primary Antibodies
Applications:	IHC
Recommended Dilution:	IHC: 15-50 Positive control: Human cervical cancer Predicted cell location: Nucleus
Reactivity:	Human, Mouse
Host:	Rabbit
Isotype:	IgG
Clonality:	Polyclonal
Immunogen:	Synthetic peptide corresponding to a region derived from 139-152 amino acids of human twist basic helix-loop-helix transcription factor 1
Formulation:	PBS pH7.3, 0.05% NaN <sub>3</sub> , 50% glycerol
Purification:	Antigen affinity purification
Conjugation:	Unconjugated
Storage:	Store at -20°C as received.
Stability:	Stable for 12 months from date of receipt.
Gene Name:	twist family bHLH transcription factor 1
Database Link:	<a href="#">NP_000465</a> <a href="#">Entrez Gene 22160 Mouse</a> <a href="#">Entrez Gene 7291 Human</a> <a href="#">Q15672</a>
Background:	Basic helix-loop-helix (bHLH) transcription factors have been implicated in cell lineage determination and differentiation. The protein encoded by this gene is a bHLH transcription factor and shares similarity with another bHLH transcription factor; Dermo1. The strongest expression of this mRNA is in placental tissue; in adults; mesodermally derived tissues express this mRNA preferentially. Mutations in this gene have been found in patients with Saethre-Chotzen syndrome.
Synonyms:	ACS3; bHLHa38; BPES2; BPES3; CRS; CRS1; CSO; SCS; TWIST
Protein Families:	Druggable Genome



[View online »](#)

**Product images:**

Immunohistochemistry of paraffin-embedded Human cervical cancer tissue using [TA323649] (TWIST1 Antibody) at dilution 1/15 (Original magnification:  $\times 200$ )



Immunohistochemistry of paraffin-embedded Human cervical cancer tissue using [TA323649] (TWIST1 Antibody) at dilution 1/15, treated with synthetic peptide. (Original magnification:  $\times 200$ )