

## Product datasheet for **TA323647S**

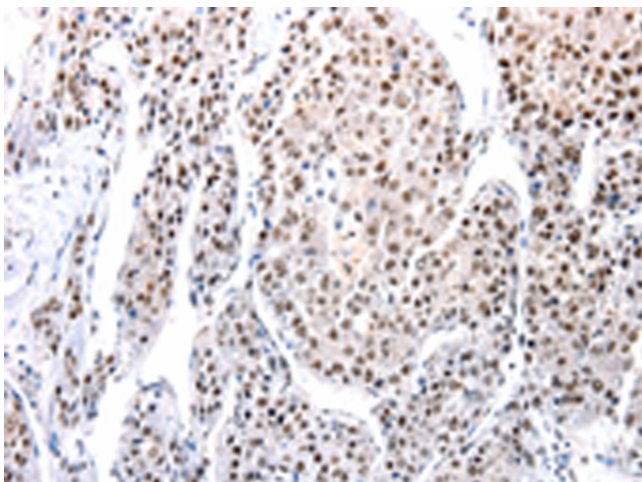
### Aquaporin 2 (AQP2) Rabbit Polyclonal Antibody

#### Product data:

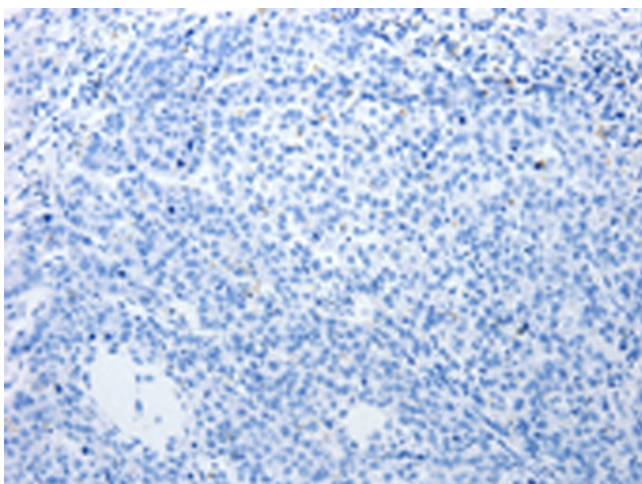
Product Type:	Primary Antibodies
Applications:	IHC
Recommended Dilution:	IHC: 100-300 Positive control: Human liver cancer Predicted cell location: Cytoplasm, Nucleus
Reactivity:	Human, Mouse, Rat
Host:	Rabbit
Isotype:	IgG
Clonality:	Polyclonal
Immunogen:	Synthetic peptide corresponding to a region derived from 255-271 amino acids of Human Aquaporin-2
Formulation:	PBS pH7.3, 0.05% NaN <sub>3</sub> , 50% glycerol
Purification:	Antigen affinity purification
Conjugation:	Unconjugated
Storage:	Store at -20°C as received.
Stability:	Stable for 12 months from date of receipt.
Gene Name:	aquaporin 2
Database Link:	<a href="#">NP_000477</a> <a href="#">Entrez Gene 11827 Mouse</a> <a href="#">Entrez Gene 25386 Rat</a> <a href="#">Entrez Gene 359 Human</a> <a href="#">P41181</a>
Background:	The basic job of aquaporin 2 is to reabsorb water from the urine while its being removed from the blood by the kidney. Aquaporin 2 is in kidney epithelial cells and usually lies dormant in intracellular vesicle membranes; but when it is needed vasopressin binds to the cell surface vasopressin receptor; activating a signaling pathway that causes the aquaporin 2 containing vesicles to fuse with the plasma membrane so the aquaporin 2 can be used by the cell.
Synonyms:	AQP-CD; WCH-CD
Protein Families:	Druggable Genome, Transmembrane



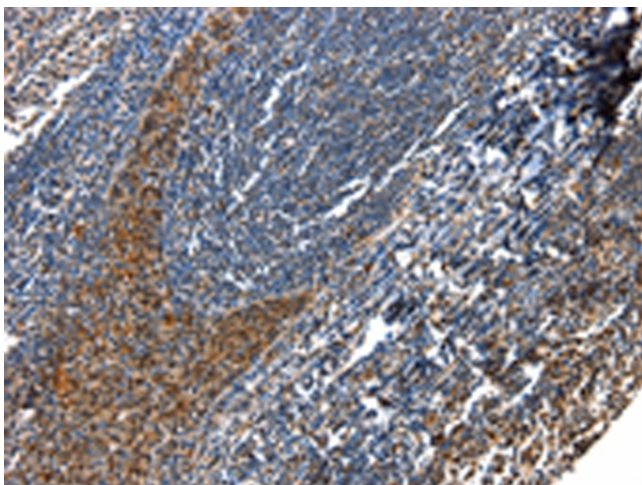
[View online »](#)

**Product images:**

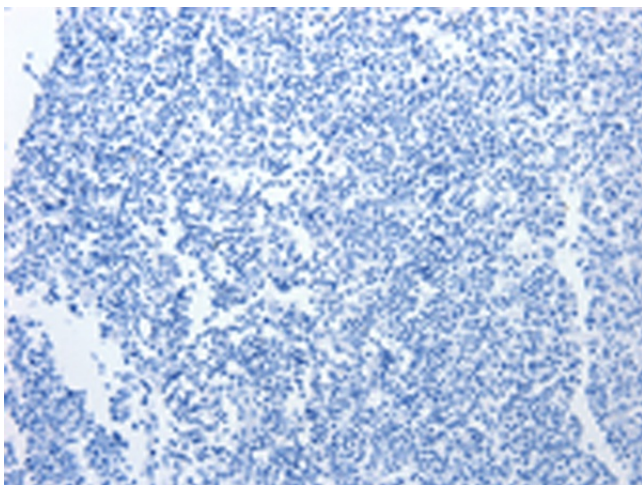
Immunohistochemistry of paraffin-embedded Human liver cancer tissue using [TA323647] (AQP2 Antibody) at dilution 1/100 (Original magnification:  $\times 200$ )



Immunohistochemistry of paraffin-embedded Human liver cancer tissue using [TA323647] (AQP2 Antibody) at dilution 1/100, treated with synthetic peptide. (Original magnification:  $\times 200$ )



Immunohistochemistry of paraffin-embedded Human tonsil tissue using [TA323647] (AQP2 Antibody) at dilution 1/100 (Original magnification:  $\times 200$ )



Immunohistochemistry of paraffin-embedded Human tonsil tissue using [TA323647] (AQP2 Antibody) at dilution 1/100, treated with synthetic peptide. (Original magnification:  $\times 200$ )