

Product datasheet for **TA323647**

Aquaporin 2 (AQP2) Rabbit Polyclonal Antibody

Product data:

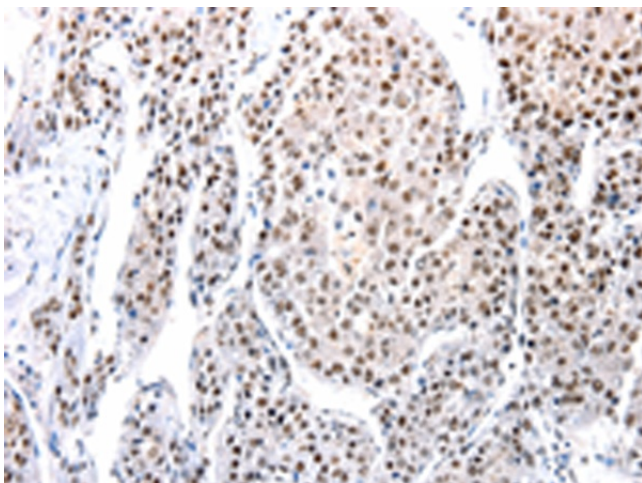
Product Type:	Primary Antibodies
Applications:	IHC
Recommended Dilution:	IHC: 100-300 Positive control: Human liver cancer Predicted cell location: Cytoplasm, Nucleus
Reactivity:	Human, Mouse, Rat
Host:	Rabbit
Isotype:	IgG
Clonality:	Polyclonal
Immunogen:	Synthetic peptide corresponding to a region derived from 255-271 amino acids of Human Aquaporin-2
Formulation:	PBS pH7.3, 0.05% NaN ₃ , 50% glycerol
Concentration:	lot specific
Purification:	Antigen affinity purification
Conjugation:	Unconjugated
Storage:	Store at -20°C as received.
Stability:	Stable for 12 months from date of receipt.
Gene Name:	aquaporin 2
Database Link:	NP_000477 Entrez Gene 11827 MouseEntrez Gene 25386 RatEntrez Gene 359 Human P41181
Background:	The basic job of aquaporin 2 is to reabsorb water from the urine while its being removed from the blood by the kidney. Aquaporin 2 is in kidney epithelial cells and usually lies dormant in intracellular vesicle membranes; but when it is needed vasopressin binds to the cell surface vasopressin receptor; activating a signaling pathway that causes the aquaporin 2 containing vesicles to fuse with the plasma membrane so the aquaporin 2 can be used by the cell.
Synonyms:	AQP-CD; WCH-CD



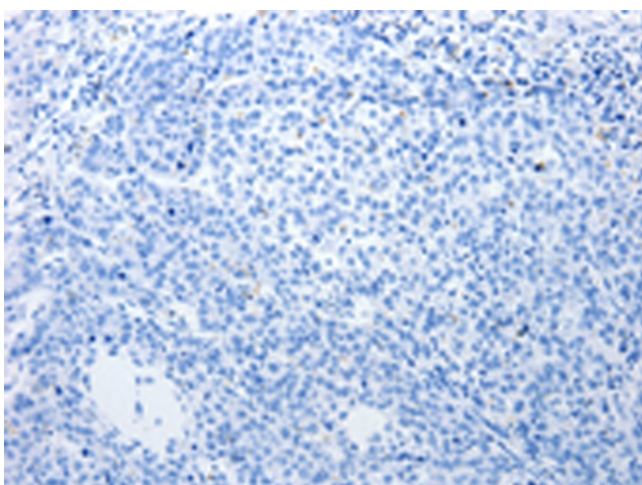
[View online »](#)

Protein Families: Druggable Genome, Transmembrane

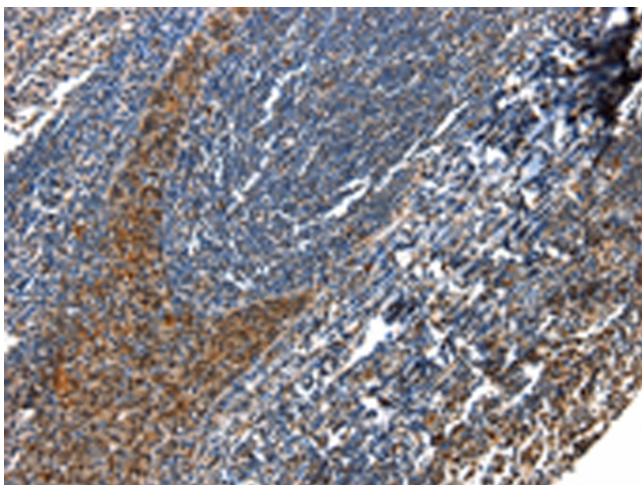
Product images:



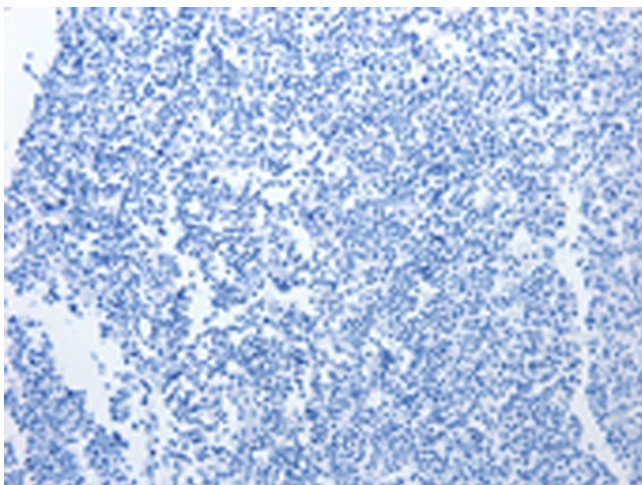
Immunohistochemistry of paraffin-embedded Human liver cancer tissue using TA323647 (AQP2 Antibody) at dilution 1/100 (Original magnification: $\times 200$)



Immunohistochemistry of paraffin-embedded Human liver cancer tissue using TA323647 (AQP2 Antibody) at dilution 1/100, treated with synthetic peptide. (Original magnification: $\times 200$)



Immunohistochemistry of paraffin-embedded Human tonsil tissue using TA323647 (AQP2 Antibody) at dilution 1/100 (Original magnification: $\times 200$)



Immunohistochemistry of paraffin-embedded Human tonsil tissue using TA323647 (AQP2 Antibody) at dilution 1/100, treated with synthetic peptide. (Original magnification: $\times 200$)