

Product datasheet for **TA323645**

Amyloid Precursor Protein (APP) Rabbit Polyclonal Antibody

Product data:

Product Type:	Primary Antibodies
Applications:	WB
Recommended Dilution:	WB: 1:500-1000
Reactivity:	Human, Mouse, Rat
Modifications:	Phospho-specific
Host:	Rabbit
Isotype:	IgG
Clonality:	Polyclonal
Immunogen:	Peptide sequence around phosphorylation site of threonine 668 (A-V-T(p)-P-E) derived from Human APP.
Formulation:	PBS pH7.3, 0.05% NaN ₃ , 50% glycerol
Concentration:	lot specific
Purification:	Antigen affinity purification
Conjugation:	Unconjugated
Storage:	Store at -20°C as received.
Stability:	Stable for 12 months from date of receipt.
Gene Name:	amyloid beta precursor protein
Database Link:	NP_000475 Entrez Gene 11820 MouseEntrez Gene 54226 RatEntrez Gene 351 Human P05067
Background:	APP encodes a cell surface receptor and transmembrane precursor protein that is cleaved by secretases to form a number of peptides. Some of these peptides are secreted and can bind to the acetyltransferase complex APBB1/TIP60 to promote transcriptional activation, while others form the protein basis of the amyloid plaques found in the brains of patients with Alzheimer disease. Mutations in this gene have been implicated in autosomal dominant Alzheimer disease and cerebroarterial amyloidosis (cerebral amyloid angiopathy). Multiple transcript variants encoding several different isoforms have been found for this gene.
Synonyms:	AAA; ABETA; ABPP; AD1; APPI; CTFgamma; CVAP; PN-II; PN2

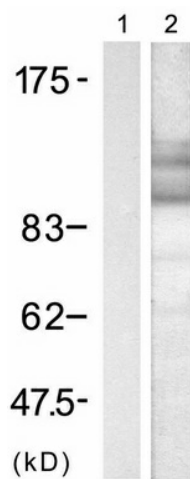


[View online »](#)

Protein Families: Druggable Genome, Transmembrane

Protein Pathways: Alzheimer's disease

Product images:



Predicted band size: 100-140 kDa. Positive control: Mouse brain tissue lysate. Recommended dilution: 1/ 500-1000. (Gel: 8%SDS-PAGE Lane 1: Treated with the peptide Lane 2: Mouse brain tissue lysate Lysates: 30 ug per lane Primary antibody: 1/500 dilution Secondary antibody: Goat anti Rabbit IgG - H&L (HRP) at 1/10000 dilution Exposure time: 1 minute)