

Product datasheet for **TA323644S**

AMH Rabbit Polyclonal Antibody

Product data:

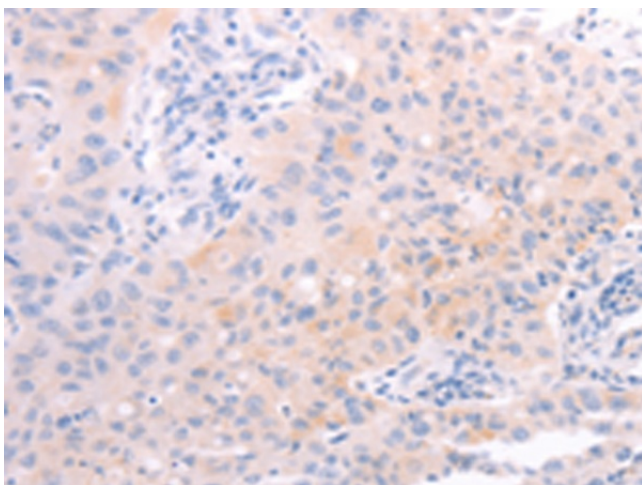
Product Type:	Primary Antibodies
Applications:	IHC
Recommended Dilution:	IHC: 25-100 Positive control: Human lung cancer Predicted cell location: Cytoplasm
Reactivity:	Human, Mouse, Rat
Host:	Rabbit
Isotype:	IgG
Clonality:	Polyclonal
Immunogen:	Synthetic peptide corresponding to a region derived from 539-551 amino acids of human anti-Mullerian hormone
Formulation:	PBS pH7.3, 0.05% NaN ₃ , 50% glycerol
Concentration:	lot specific
Purification:	Antigen affinity purification
Conjugation:	Unconjugated
Storage:	Store at -20°C as received.
Stability:	Stable for 12 months from date of receipt.
Gene Name:	anti-Mullerian hormone
Database Link:	NP_000470 Entrez Gene 11705 MouseEntrez Gene 25378 RatEntrez Gene 268 Human P03971
Background:	Anti-Mullerian hormone is a member of the transforming growth factor-beta gene family which mediates male sexual differentiation. Anti-Mullerian hormone causes the regression of Mullerian ducts which would otherwise differentiate into the uterus and fallopian tubes. Some mutations in the anti-Mullerian hormone result in persistent Mullerian duct syndrome.
Synonyms:	MIF; MIS
Protein Families:	Druggable Genome, Secreted Protein



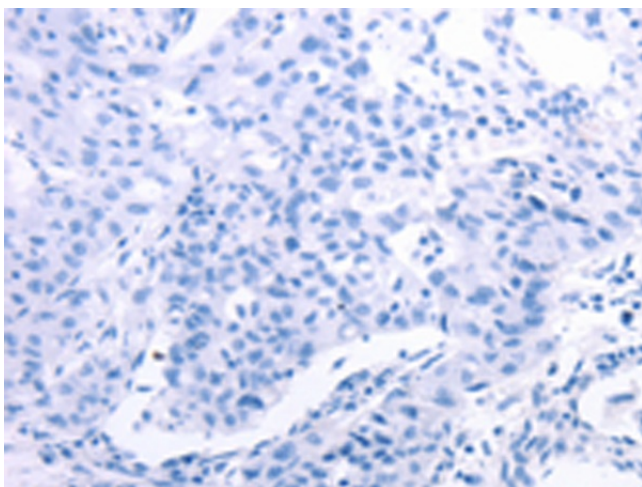
[View online »](#)

Protein Pathways: Cytokine-cytokine receptor interaction, TGF-beta signaling pathway

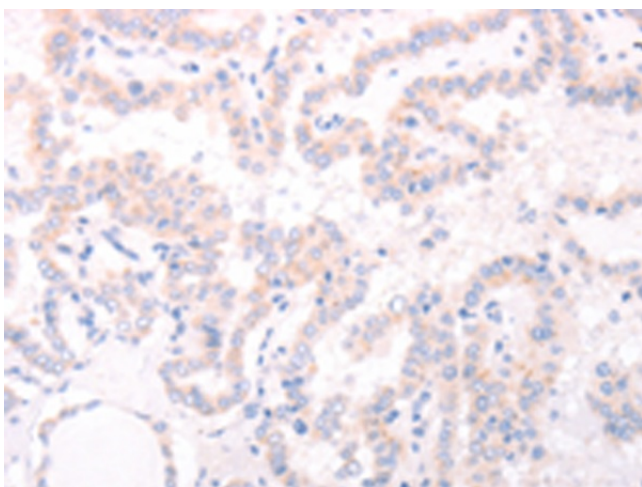
Product images:



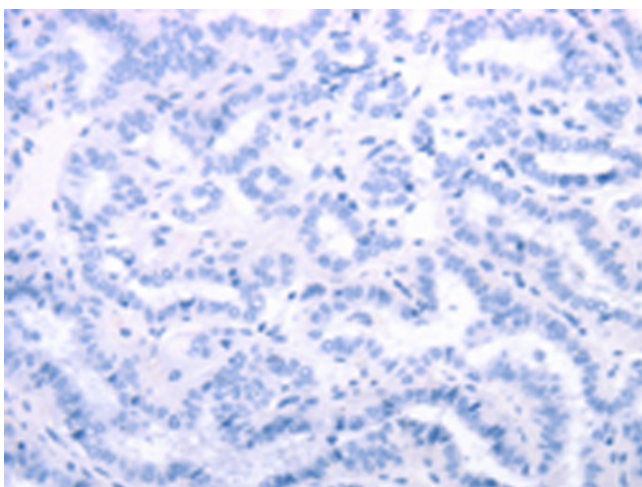
Immunohistochemistry of paraffin-embedded Human lung cancer tissue using [TA323644] (AMH Antibody) at dilution 1/30 (Original magnification: x200)



Immunohistochemistry of paraffin-embedded Human lung cancer tissue using [TA323644] (AMH Antibody) at dilution 1/30, treated with synthetic peptide. (Original magnification: x200)



Immunohistochemistry of paraffin-embedded Human thyroid cancer tissue using [TA323644] (AMH Antibody) at dilution 1/30 (Original magnification: $\times 200$)



Immunohistochemistry of paraffin-embedded Human thyroid cancer tissue using [TA323644] (AMH Antibody) at dilution 1/30, treated with synthetic peptide. (Original magnification: $\times 200$)