

Product datasheet for **TA323641**

CFTR Rabbit Polyclonal Antibody

Product data:

| | |
|-----------------------|---|
| Product Type: | Primary Antibodies |
| Applications: | IHC |
| Recommended Dilution: | IHC: 10-50 Positive control: Human thyroid cancer Predicted cell location: Cytoplasm |
| Reactivity: | Human |
| Host: | Rabbit |
| Isotype: | IgG |
| Clonality: | Polyclonal |
| Immunogen: | Synthetic peptide corresponding to a region derived from 681-897 amino acids of Human Cystic fibrosis transmembrane conductance regulator |
| Formulation: | PBS pH7.3, 0.05% NaN ₃ , 50% glycerol |
| Concentration: | lot specific |
| Purification: | Antigen affinity purification |
| Conjugation: | Unconjugated |
| Storage: | Store at -20°C as received. |
| Stability: | Stable for 12 months from date of receipt. |
| Gene Name: | cystic fibrosis transmembrane conductance regulator |
| Database Link: | NP_000483 Entrez Gene 1080 Human P13569 |



[View online »](#)

Background:

This gene encodes a member of the ATP-binding cassette (ABC) transporter superfamily. ABC proteins transport various molecules across extra- and intra-cellular membranes. ABC genes are divided into seven distinct subfamilies (ABC1; MDR/TAP; MRP; ALD; OABP; GCN20; White). This protein is a member of the MRP subfamily that is involved in multi-drug resistance. The encoded protein functions as a chloride channel and controls the regulation of other transport pathways. Mutations in this gene are associated with the autosomal recessive disorders cystic fibrosis and congenital bilateral aplasia of the vas deferens. Alternatively spliced transcript variants have been described; many of which result from mutations in this gene.

Synonyms:

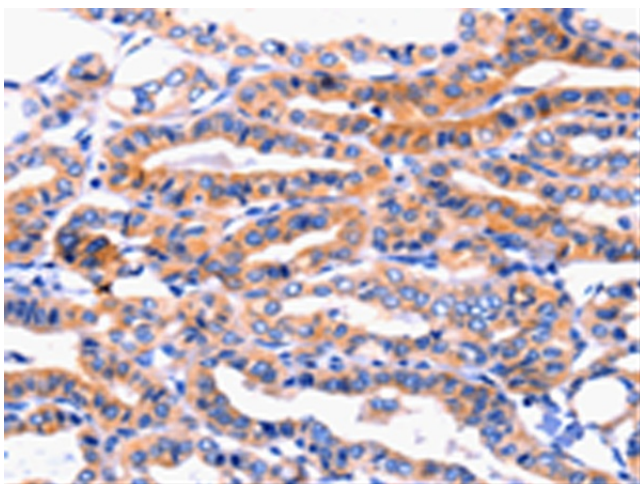
ABC35; ABCC7; CF; CFTR; dj760C5.1; MRP; MRP7; TNR-CFTR

Protein Families:

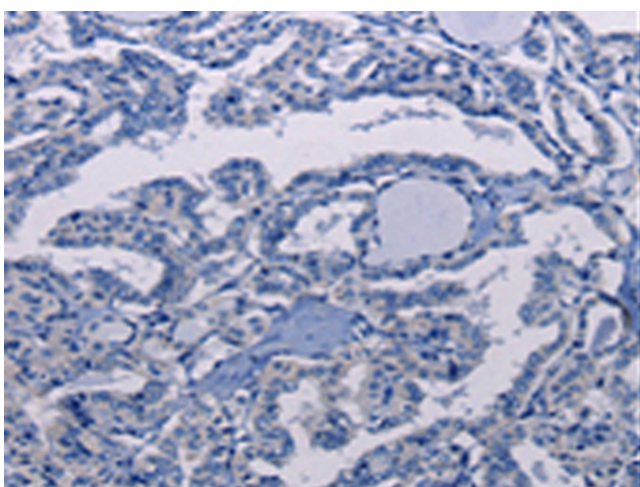
Druggable Genome, Transmembrane

Protein Pathways:

ABC transporters, Vibrio cholerae infection

Product images:

Immunohistochemistry of paraffin-embedded Human thyroid cancer tissue using TA323641 (CFTR Antibody) at dilution 1/8 (Original magnification: $\times 200$)



Immunohistochemistry of paraffin-embedded Human thyroid cancer tissue using TA323641 (CFTR Antibody) at dilution 1/8, treated with synthetic peptide. (Original magnification: $\times 200$)