

Product datasheet for **TA323634**

Cytokeratin 14 (KRT14) Rabbit Polyclonal Antibody

Product data:

Product Type:	Primary Antibodies
Applications:	IHC, WB
Recommended Dilution:	WB: 1000-5000 WB positive control: Mouse skin tissue IHC: 25-100 Positive control: Human cervical cancer Predicted cell location: Cytoplasm
Reactivity:	Human, Mouse, Rat
Host:	Rabbit
Isotype:	IgG
Clonality:	Polyclonal
Immunogen:	Synthetic peptide corresponding to a region derived from 457-472 amino acids of Human Keratin, type I cytoskeletal 14
Formulation:	PBS pH7.3, 0.05% NaN ₃ , 50% glycerol
Concentration:	lot specific
Purification:	Antigen affinity purification
Conjugation:	Unconjugated
Storage:	Store at -20°C as received.
Stability:	Stable for 12 months from date of receipt.
Predicted Protein Size:	52 kDa
Gene Name:	keratin 14
Database Link:	NP_000517 Entrez Gene 16664 Mouse Entrez Gene 287701 Rat Entrez Gene 3861 Human P02533



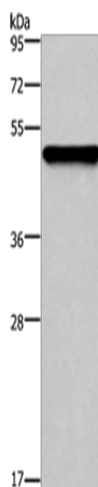
[View online »](#)

Background:

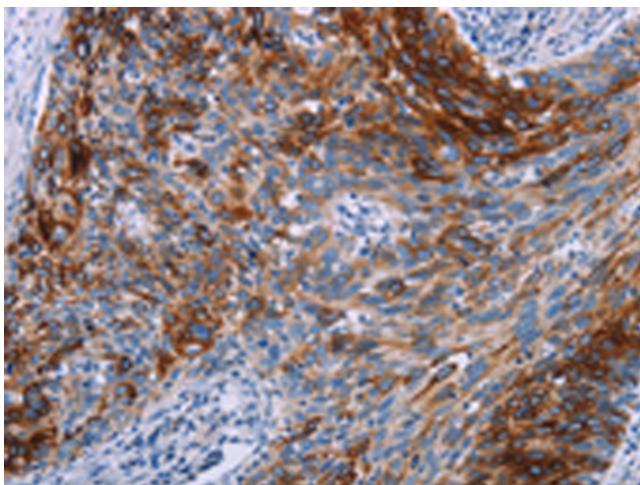
This gene encodes a member of the keratin family; the most diverse group of intermediate filaments. This gene product; a type I keratin; is usually found as a heterotetramer with two keratin 5 molecules; a type II keratin. Together they form the cytoskeleton of epithelial cells. Mutations in the genes for these keratins are associated with epidermolysis bullosa simplex. At least one pseudogene has been identified at 17p12-p11.

Synonyms:

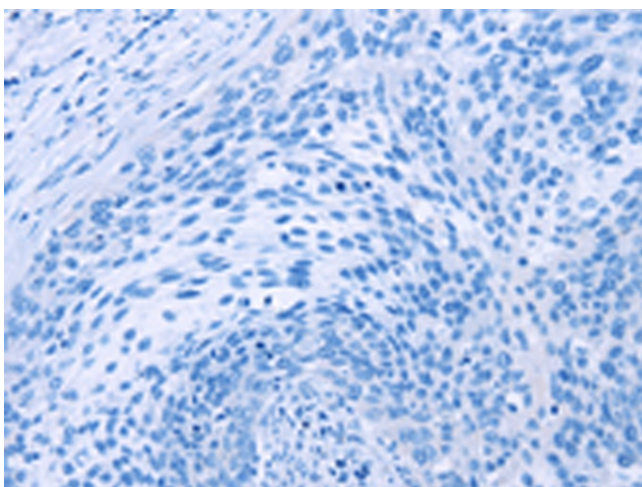
CK14; EBS3; EBS4; K14; NFJ

Product images:

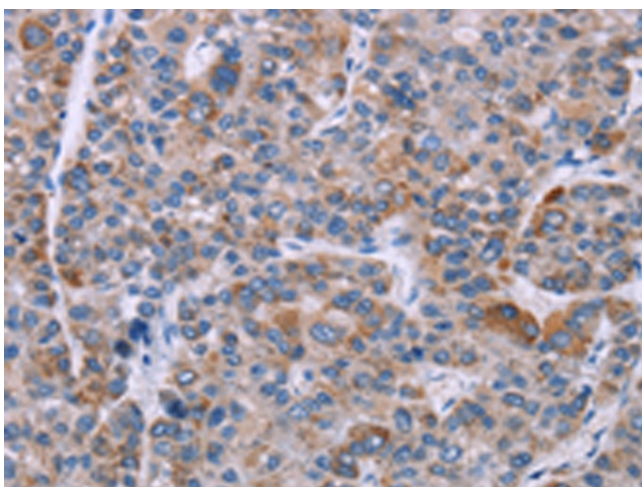
Gel: 8%SDS-PAGE
Lysate: 20 µg
Lane: Mouse skin tissue
Primary antibody: TA323634 (KRT14 Antibody) at dilution 1/1000
Secondary antibody: Goat anti rabbit IgG at 1/8000 dilution
Exposure time: 20 seconds



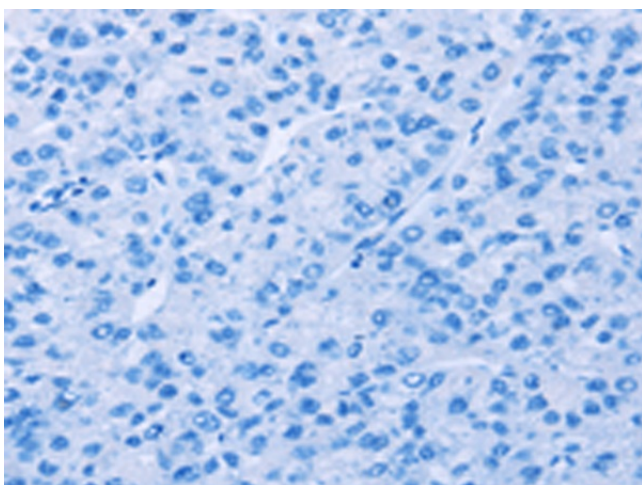
Immunohistochemistry of paraffin-embedded Human cervical cancer tissue using TA323634 (KRT14 Antibody) at dilution 1/20 (Original magnification: ×200)



Immunohistochemistry of paraffin-embedded Human cervical cancer tissue using TA323634 (KRT14 Antibody) at dilution 1/20, treated with synthetic peptide. (Original magnification: ×200)



Immunohistochemistry of paraffin-embedded Human liver cancer tissue using TA323634 (KRT14 Antibody) at dilution 1/20 (Original magnification: ×200)



Immunohistochemistry of paraffin-embedded Human liver cancer tissue using TA323634 (KRT14 Antibody) at dilution 1/20, treated with synthetic peptide. (Original magnification: ×200)