

Product datasheet for **TA323633**

5 HT1A (HTR1A) Rabbit Polyclonal Antibody

Product data:

Product Type:	Primary Antibodies
Applications:	IHC, WB
Recommended Dilution:	WB: 1000-5000 WB positive control: HT-29 cells and Mouse brain tissue IHC: 100-300 Positive control: Human cervical cancer Predicted cell location: Cytoplasm, Cell membrane
Reactivity:	Human, Mouse, Rat
Host:	Rabbit
Isotype:	IgG
Clonality:	Polyclonal
Immunogen:	Synthetic peptide corresponding to a region derived from 140-153 amino acids of Human 5-hydroxytryptamine receptor 1A
Formulation:	PBS pH7.3, 0.05% NaN ₃ , 50% glycerol
Concentration:	lot specific
Purification:	Antigen affinity purification
Conjugation:	Unconjugated
Storage:	Store at -20°C as received.
Stability:	Stable for 12 months from date of receipt.
Predicted Protein Size:	46 kDa
Gene Name:	5-hydroxytryptamine receptor 1A
Database Link:	NP_000515 Entrez Gene 15550 Mouse Entrez Gene 24473 Rat Entrez Gene 3350 Human P08908



[View online »](#)

Background:

This gene encodes a G protein-coupled receptor for 5-hydroxytryptamine (serotonin); and belongs to the 5-hydroxytryptamine receptor subfamily. Serotonin has been implicated in a number of physiologic processes and pathologic conditions. Inactivation of this gene in mice results in behavior consistent with an increased anxiety and stress response. Mutation in the promoter of this gene has been associated with menstrual cycle-dependent periodic fevers

Synonyms:

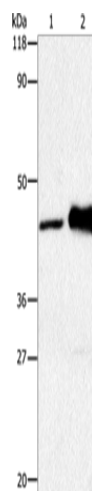
5-HT-1A; 5-HT1A; 5HT1a; ADRB2RL1; ADRBRL1; G-21; PFMCD

Protein Families:

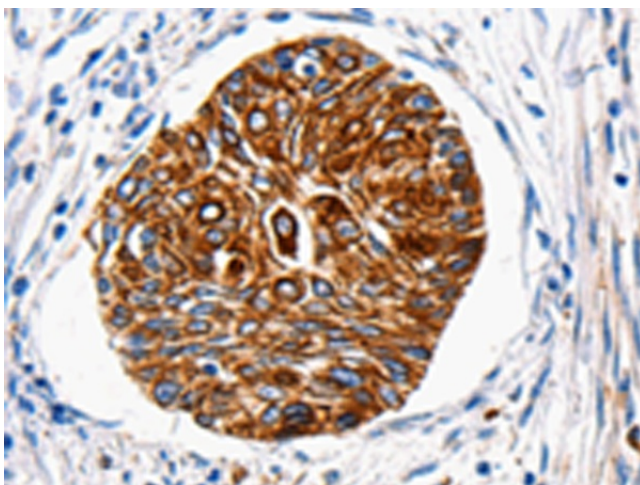
Druggable Genome, GPCR, Transmembrane

Protein Pathways:

Neuroactive ligand-receptor interaction

Product images:


Gel: 8%SDS-PAGE
 Lysate: 30 µg
 Lane 1-2: HT29 cells
 Mouse brain tissue
 Primary antibody: TA323633 (HTR1A Antibody) at dilution 1/1500
 Secondary antibody: Goat anti rabbit IgG at 1/8000 dilution
 Exposure time: 2 minutes



Immunohistochemistry of paraffin-embedded Human cervical cancer tissue using TA323633 (HTR1A Antibody) at dilution 1/100. (Original magnification: x200)