

## Product datasheet for **TA323630**

### PMS2 Rabbit Polyclonal Antibody

#### Product data:

Product Type:	Primary Antibodies
Applications:	IHC
Recommended Dilution:	IHC: 25-100 Positive control: Human liver cancer Predicted cell location: Cytoplasm, Nucleus
Reactivity:	Human
Host:	Rabbit
Isotype:	IgG
Clonality:	Polyclonal
Immunogen:	Synthetic peptide corresponding to a region derived from 638-650 amino acids of Human PMS2 postmeiotic segregation increased 2 ( <i>S. cerevisiae</i> )
Formulation:	PBS pH7.3, 0.05% NaN <sub>3</sub> , 50% glycerol
Concentration:	lot specific
Purification:	Antigen affinity purification
Conjugation:	Unconjugated
Storage:	Store at -20°C as received.
Stability:	Stable for 12 months from date of receipt.
Gene Name:	PMS1 homolog 2, mismatch repair system component
Database Link:	<a href="#">NP_000526</a> <a href="#">Entrez Gene 5395 Human</a> <a href="#">P54278</a>
Background:	This gene is one of the PMS2 gene family members found in clusters on chromosome 7. The product of this gene is involved in DNA mismatch repair. It forms a heterodimer with MLH1 and this complex interacts with other complexes bound to mismatched bases. Mutations in this gene are associated with hereditary nonpolyposis colorectal cancer; Turcot syndrome; and are a cause of supratentorial primitive neuroectodermal tumors. Alternatively spliced transcript variants have been observed for this gene.
Synonyms:	HNPCC4; PMS2CL; PMSL2

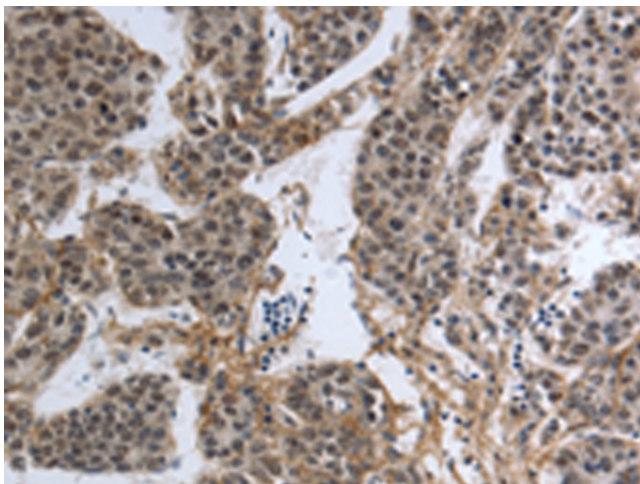


[View online »](#)

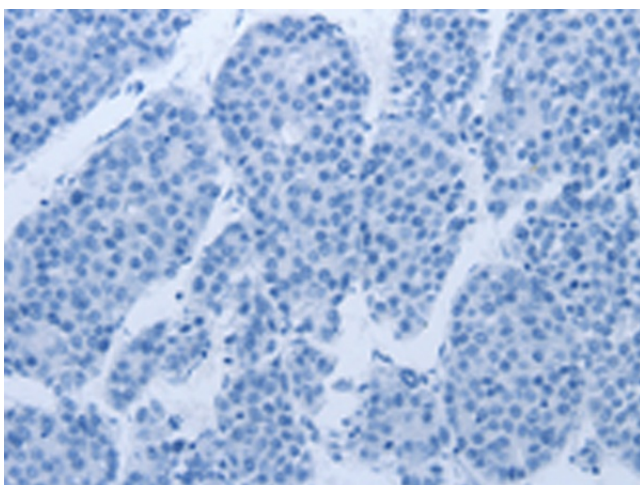
Protein Families: Druggable Genome

Protein Pathways: Mismatch repair

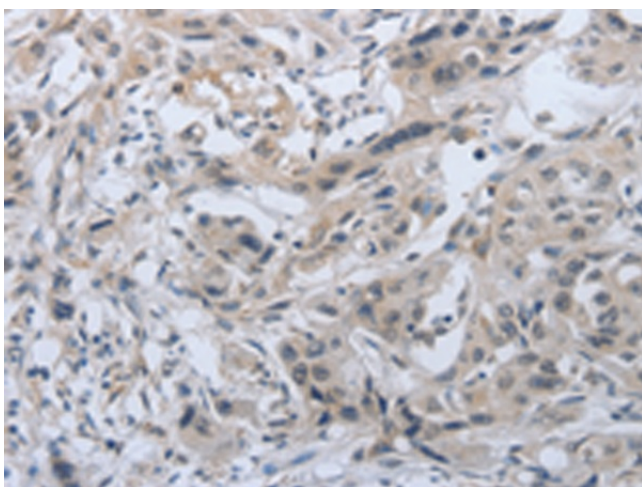
**Product images:**



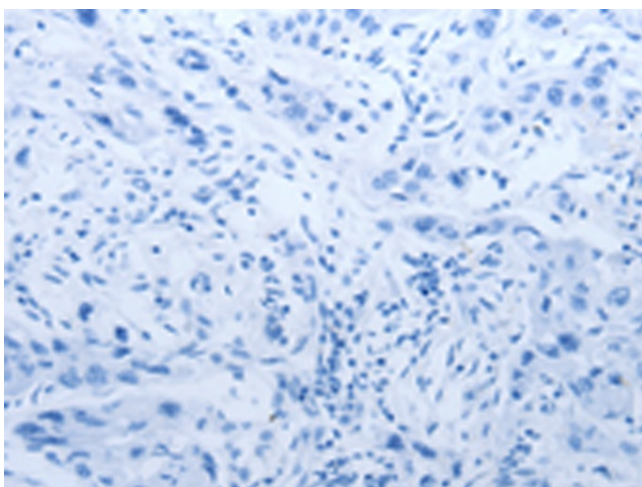
Immunohistochemistry of paraffin-embedded Human liver cancer tissue using TA323630 (PMS2 Antibody) at dilution 1/30 (Original magnification: ×200)



Immunohistochemistry of paraffin-embedded Human liver cancer tissue using TA323630 (PMS2 Antibody) at dilution 1/30, treated with synthetic peptide. (Original magnification: ×200)



Immunohistochemistry of paraffin-embedded Human lung cancer tissue using TA323630 (PMS2 Antibody) at dilution 1/30 (Original magnification: ×200)



Immunohistochemistry of paraffin-embedded Human lung cancer tissue using TA323630 (PMS2 Antibody) at dilution 1/30, treated with synthetic peptide. (Original magnification: ×200)