

## Product datasheet for **TA323627**

### Doublecortin (DCX) Rabbit Polyclonal Antibody

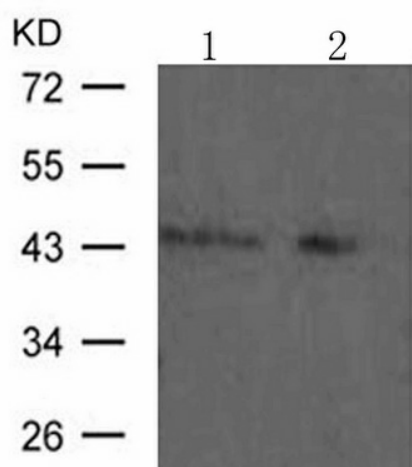
#### Product data:

Product Type:	Primary Antibodies
Applications:	WB
Recommended Dilution:	WB: 1:500-1000
Reactivity:	Human, Mouse, Rat
Host:	Rabbit
Isotype:	IgG
Clonality:	Polyclonal
Immunogen:	Peptide sequence around aa.413~417( P-T-S-P-G) derived from Human Doublecortin.
Formulation:	PBS pH7.3, 0.05% NaN <sub>3</sub> , 50% glycerol
Concentration:	lot specific
Purification:	Antigen affinity purification
Conjugation:	Unconjugated
Storage:	Store at -20°C as received.
Stability:	Stable for 12 months from date of receipt.
Predicted Protein Size:	45 kDa
Gene Name:	doublecortin
Database Link:	<a href="#">NP_000546</a> <a href="#">Entrez Gene 13193 MouseEntrez Gene 84394 RatEntrez Gene 1641 Human O43602</a>
Background:	Seems to be required for initial steps of neuronal dispersion and cortex lamination during cerebral cortex development. May act by competing with the putative neuronal protein kinase DCAMKL1 in binding to a target protein. May in that way participate in a signaling pathway that is crucial for neuronal interaction before and during migration, possibly as part of a calcium ion-dependent signal transduction pathway. May be part with LIS-1 of an overlapping, but distinct, signaling pathways that promote neuronal migration.
Synonyms:	DBCN; DC; LISX; SCLH; XLIS
Protein Families:	Druggable Genome



[View online »](#)

## Product images:



Predicted band size: 45 kDa. Positive control: Molt-4 and HeLa cells lysate. Recommended dilution: 1/ 500-1000. (Gel: 10%SDS-PAGE Lane 1, 2: Molt-4 and HeLa cells lysate Lysates: 30 ug per lane Primary antibody: 1/500 dilution Secondary antibody: Goat anti Rabbit IgG - H&L (HRP) at 1/10000 dilution Exposure time: 1 minute)