

## Product datasheet for **TA323624**

### C Reactive Protein (CRP) Rabbit Polyclonal Antibody

#### Product data:

Product Type:	Primary Antibodies
Applications:	IHC, WB
Recommended Dilution:	WB: 500-2000 WB positive control: Human liver cancer tissue IHC: 50-200 Positive control: Human thyroid cancer Predicted cell location: Cytoplasm
Reactivity:	Human
Host:	Rabbit
Isotype:	IgG
Clonality:	Polyclonal
Immunogen:	Fusion protein corresponding to a region derived from 2-91 amino acids of human C-reactive protein, pentraxin-related
Formulation:	PBS pH7.3, 0.05% NaN <sub>3</sub> , 50% glycerol
Concentration:	lot specific
Purification:	Antigen affinity purification
Conjugation:	Unconjugated
Storage:	Store at -20°C as received.
Stability:	Stable for 12 months from date of receipt.
Predicted Protein Size:	25 kDa
Gene Name:	C-reactive protein, pentraxin-related
Database Link:	<a href="#">NP_000558</a> <a href="#">Entrez Gene 1401 Human P02741</a>



[View online »](#)

**Background:**

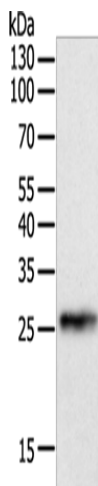
The protein encoded by this gene belongs to the pentaxin family. It is involved in several host defense related functions based on its ability to recognize foreign pathogens and damaged cells of the host and to initiate their elimination by interacting with humoral and cellular effector systems in the blood. Consequently; the level of this protein in plasma increases greatly during acute phase response to tissue injury; infection; or other inflammatory stimuli.

**Synonyms:**

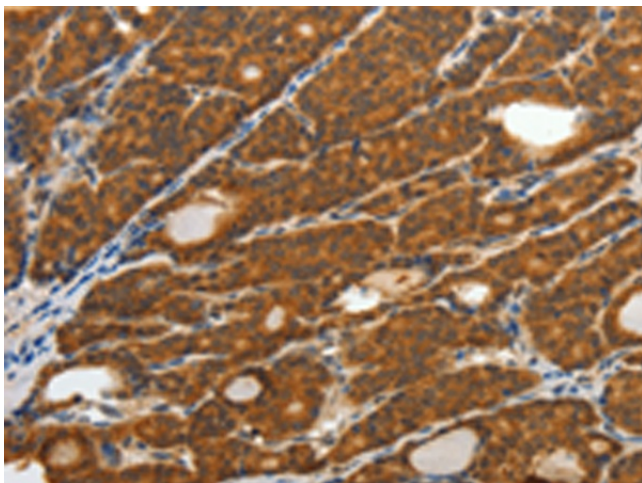
PTX1

**Protein Families:**

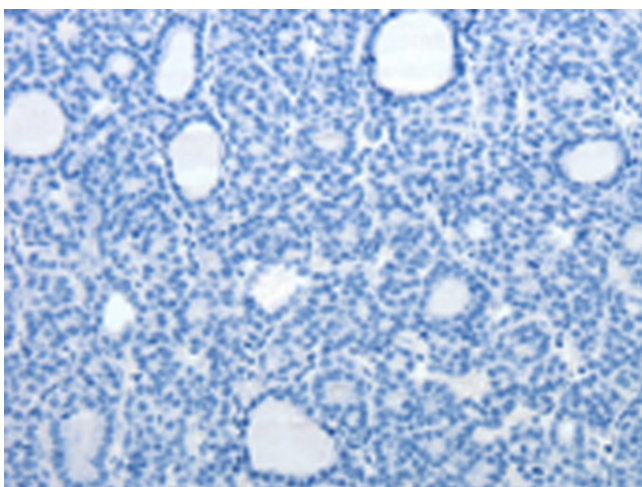
Secreted Protein

**Product images:**

Gel: 12%SDS-PAGE  
Lysate: 40 µg  
Lane: Human liver cancer tissue  
Primary antibody: TA323624 (CRP Antibody) at dilution 1/800  
Secondary antibody: Goat anti rabbit IgG at 1/8000 dilution  
Exposure time: 30 seconds



Immunohistochemistry of paraffin-embedded Human thyroid cancer tissue using TA323624 (CRP Antibody) at dilution 1/40 (Original magnification: ×200)



Immunohistochemistry of paraffin-embedded Human thyroid cancer tissue using TA323624 (CRP Antibody) at dilution 1/40, treated with fusion protein. (Original magnification: ×200)