

Product datasheet for **TA323620**

Osteopontin (SPP1) Rabbit Polyclonal Antibody

Product data:

Product Type:	Primary Antibodies
Applications:	IHC, WB
Recommended Dilution:	WB: 200-1000 WB positive control: OP9 cells IHC: 25-100 Positive control: Human ovarian cancer Predicted cell location: Cytoplasm
Reactivity:	Human
Host:	Rabbit
Isotype:	IgG
Clonality:	Polyclonal
Immunogen:	Fusion protein corresponding to a region derived from 17-300 amino acids of human secreted phosphoprotein 1
Formulation:	PBS pH7.3, 0.05% NaN ₃ , 50% glycerol
Concentration:	lot specific
Purification:	Antigen affinity purification
Conjugation:	Unconjugated
Storage:	Store at -20°C as received.
Stability:	Stable for 12 months from date of receipt.
Predicted Protein Size:	34 kDa
Gene Name:	secreted phosphoprotein 1
Database Link:	NP_000573 Entrez Gene 6696 Human P10451



[View online »](#)

Background: The protein encoded by this gene is involved in the attachment of osteoclasts to the mineralized bone matrix. The encoded protein is secreted and binds hydroxyapatite with high affinity. The osteoclast vitronectin receptor is found in the cell membrane and may be involved in the binding to this protein. This protein is also a cytokine that upregulates expression of interferon-gamma and interleukin-12. Several transcript variants encoding different isoforms have been found for this gene.

Synonyms: BNSP; BSPI; ETA-1; OPN

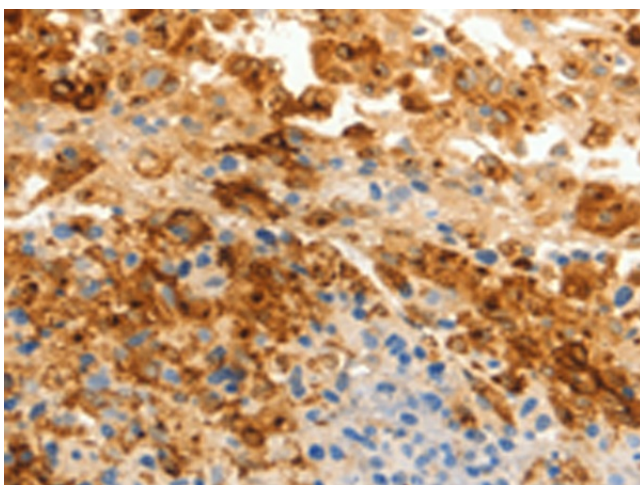
Protein Families: Druggable Genome, Secreted Protein

Protein Pathways: ECM-receptor interaction, Focal adhesion, Toll-like receptor signaling pathway

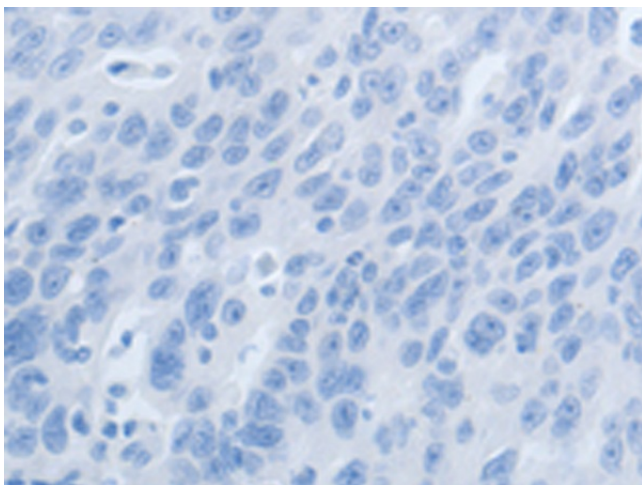
Product images:



Gel: 10%SDS-PAGE
 Lysate: 40 µg
 Lane: OP9 cells
 Primary antibody: TA323620 (SPP1 Antibody) at dilution 1/250
 Secondary antibody: Goat anti rabbit IgG at 1/8000 dilution
 Exposure time: 30 seconds



Immunohistochemistry of paraffin-embedded Human ovarian cancer tissue using TA323620 (SPP1 Antibody) at dilution 1/20 (Original magnification: ×200)



Immunohistochemistry of paraffin-embedded Human ovarian cancer tissue using TA323620 (SPP1 Antibody) at dilution 1/20, treated with fusion protein. (Original magnification: ×200)