

Product datasheet for **TA323619**

LTA Rabbit Polyclonal Antibody

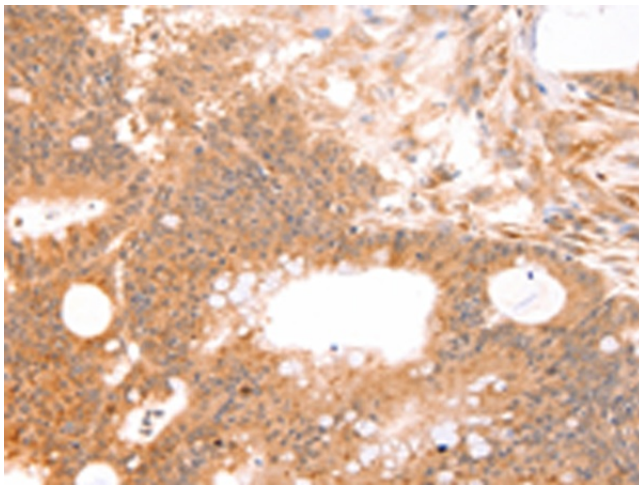
Product data:

Product Type:	Primary Antibodies
Applications:	IHC
Recommended Dilution:	IHC: 50-200 Positive control: Human colon cancer Predicted cell location: Cytoplasm
Reactivity:	Human
Host:	Rabbit
Isotype:	IgG
Clonality:	Polyclonal
Immunogen:	Fusion protein corresponding to a region derived from 36-205 amino acids of human lymphotoxin alpha (TNF superfamily, member 1)
Formulation:	PBS pH7.3, 0.05% NaN ₃ , 50% glycerol
Concentration:	lot specific
Purification:	Antigen affinity purification
Conjugation:	Unconjugated
Storage:	Store at -20°C as received.
Stability:	Stable for 12 months from date of receipt.
Gene Name:	lymphotoxin alpha
Database Link:	NP_000586 Entrez Gene 4049 Human P01374

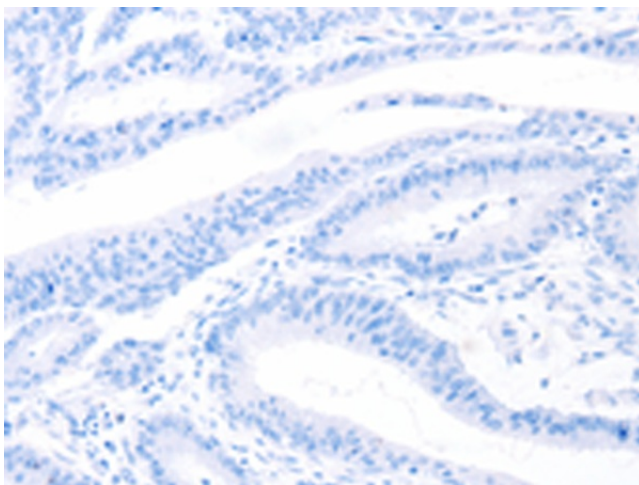


[View online »](#)

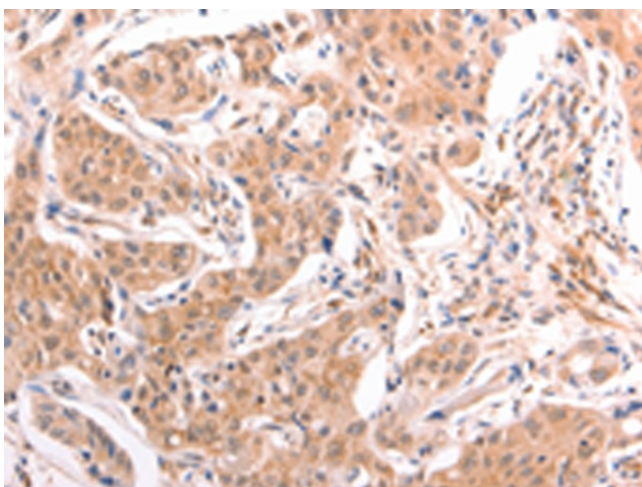
Background:	The encoded protein; a member of the tumor necrosis factor family; is a cytokine produced by lymphocytes. The protein is highly inducible; secreted; and forms heterotrimers with lymphotoxin-beta which anchor lymphotoxin-alpha to the cell surface. This protein also mediates a large variety of inflammatory; immunostimulatory; and antiviral responses; is involved in the formation of secondary lymphoid organs during development and plays a role in apoptosis. Genetic variations in this gene are associated with susceptibility to leprosy type 4; myocardial infarction; non-Hodgkin's lymphoma; and psoriatic arthritis. Alternatively spliced transcript variants have been observed for this gene.
Synonyms:	LT; TNFB; TNFSF1
Protein Families:	Druggable Genome, Secreted Protein, Transmembrane
Protein Pathways:	Antigen processing and presentation, Cytokine-cytokine receptor interaction, Type I diabetes mellitus

Product images:

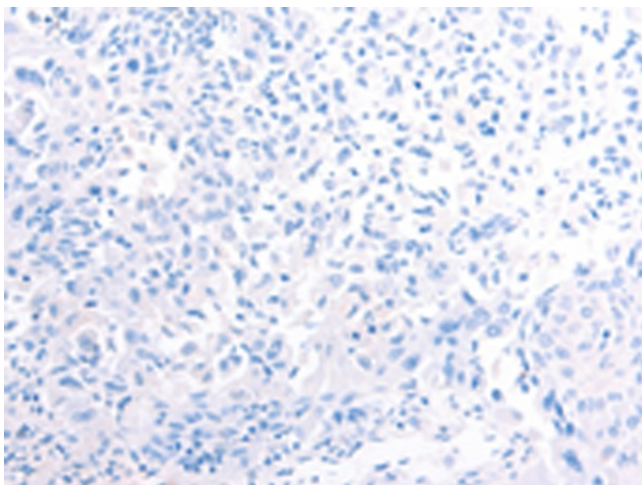
Immunohistochemistry of paraffin-embedded Human colon cancer tissue using TA323619 (LTA Antibody) at dilution 1/50 (Original magnification: ×200)



Immunohistochemistry of paraffin-embedded Human colon cancer tissue using TA323619 (LTA Antibody) at dilution 1/50, treated with fusion protein. (Original magnification: ×200)



Immunohistochemistry of paraffin-embedded Human lung cancer tissue using TA323619 (LTA Antibody) at dilution 1/50 (Original magnification: $\times 200$)



Immunohistochemistry of paraffin-embedded Human lung cancer tissue using TA323619 (LTA Antibody) at dilution 1/50, treated with fusion protein. (Original magnification: $\times 200$)