

## Product datasheet for **TA323616**

### IGFBP3 Rabbit Polyclonal Antibody

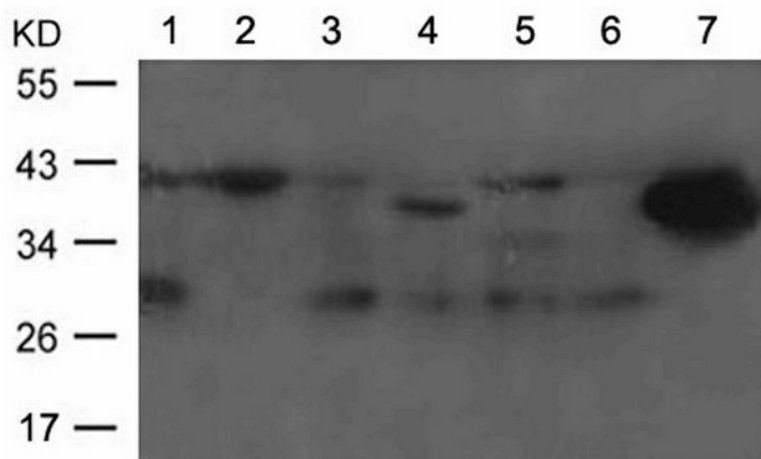
#### Product data:

Product Type:	Primary Antibodies
Applications:	WB
Recommended Dilution:	WB: 1:500-1000
Reactivity:	Human
Host:	Rabbit
Isotype:	IgG
Clonality:	Polyclonal
Immunogen:	Peptide sequence around aa.185~189(R-Y-K-V-D) derived from Human IGFBP-3.
Formulation:	PBS pH7.3, 0.05% NaN <sub>3</sub> , 50% glycerol
Concentration:	lot specific
Purification:	Antigen affinity purification
Conjugation:	Unconjugated
Storage:	Store at -20°C as received.
Stability:	Stable for 12 months from date of receipt.
Gene Name:	insulin like growth factor binding protein 3
Database Link:	<a href="#">NP_000589</a> <a href="#">Entrez Gene 3486 Human P17936</a>
Background:	IGF-binding proteins prolong the half-life of the IGFs and have been shown to either inhibit or stimulate the growth promoting effects of the IGFs on cell culture. They alter the interaction of IGFs with their cell surface receptors.
Synonyms:	BP-53; IBP3
Protein Families:	Druggable Genome, Secreted Protein
Protein Pathways:	p53 signaling pathway



[View online »](#)

## Product images:



Predicted band size: 24-41 kDa. Positive control: HepG2, 3T3, HeLa, 293, Jurkat, K562, Raji cells lysate. Recommended dilution: 1/ 500-1000. (Gel: 10%SDS-PAGE Lane 1, 2, 3, 4, 5, 6, 7: HepG2, 3T3, HeLa, 293, Jurkat, K562, Raji cells lysate Lysates: 30 ug per lane Primary antibody: 1/500 dilution Secondary antibody: Goat anti Rabbit IgG - H&L (HRP) at 1/10000 dilution Exposure time: 1 minute)