

Product datasheet for **TA323610S**

Protein C inhibitor (SERPINA5) Rabbit Polyclonal Antibody

Product data:

Product Type:	Primary Antibodies
Applications:	IHC, WB
Recommended Dilution:	WB: 1000-5000 WB positive control: Human liver cancer tissue and A549 cells IHC: 50-200 Positive control: Human lung cancer Predicted cell location: Cytoplasm, ExtraCellular space
Reactivity:	Human
Host:	Rabbit
Isotype:	IgG
Clonality:	Polyclonal
Immunogen:	Fusion protein corresponding to C terminal 250 amino acids of human serpin peptidase inhibitor, clade A (alpha-1 antiproteinase, antitrypsin), member 5
Formulation:	PBS pH7.3, 0.05% NaN ₃ , 50% glycerol
Purification:	Antigen affinity purification
Conjugation:	Unconjugated
Storage:	Store at -20°C as received.
Stability:	Stable for 12 months from date of receipt.
Predicted Protein Size:	46 kDa
Gene Name:	serpin family A member 5
Database Link:	NP_000615 Entrez Gene 5104 Human P05154
Background:	The protein encoded by this gene is a member of the serpin family of proteins; a group of proteins that inhibit serine proteases. This gene is one in a cluster of serpin genes located on the q arm of chromosome 14. This family member is a glycoprotein that can inhibit several serine proteases; including protein C and various plasminogen activators and kallikreins; and it thus plays diverse roles in hemostasis and thrombosis in multiple organs.



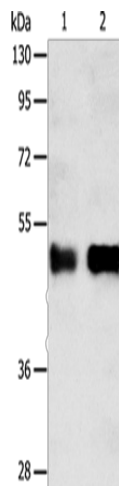
[View online »](#)

Synonyms: PAI-3; PAI3; PCI; PCI-B; PLANH3; PROCI

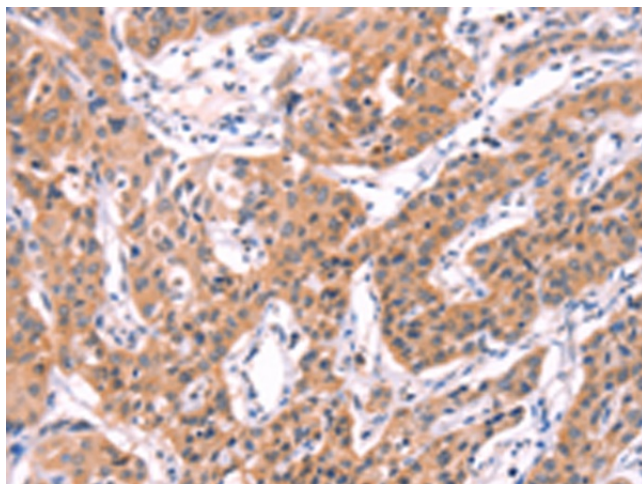
Protein Families: Druggable Genome, Secreted Protein

Protein Pathways: Complement and coagulation cascades

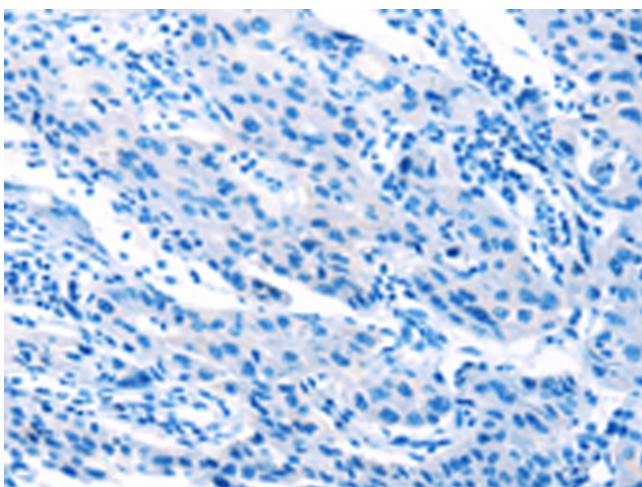
Product images:



Gel: 10%SDS-PAGE
Lysate: 40 µg
Lane 1-2: Human liver cancer tissue
A549 cells
Primary antibody: [TA323610] (SERPINA5
Antibody) at dilution 1/750
Secondary antibody: Goat anti rabbit IgG at
1/8000 dilution
Exposure time: 10 minutes



Immunohistochemistry of paraffin-embedded
Human lung cancer tissue using [TA323610]
(SERPINA5 Antibody) at dilution 1/40 (Original
magnification: ×200)



Immunohistochemistry of paraffin-embedded Human lung cancer tissue using [TA323610] (SERPINA5 Antibody) at dilution 1/40, treated with fusion protein. (Original magnification: ×200)