

Product datasheet for **TA323610**

Protein C inhibitor (SERPINA5) Rabbit Polyclonal Antibody

Product data:

Product Type:	Primary Antibodies
Applications:	IHC, WB
Recommended Dilution:	WB: 1000-5000 WB positive control: Human liver cancer tissue and A549 cells IHC: 50-200 Positive control: Human lung cancer Predicted cell location: Cytoplasm, ExtraCellular space
Reactivity:	Human
Host:	Rabbit
Isotype:	IgG
Clonality:	Polyclonal
Immunogen:	Fusion protein corresponding to C terminal 250 amino acids of human serpin peptidase inhibitor, clade A (alpha-1 antiproteinase, antitrypsin), member 5
Formulation:	PBS pH7.3, 0.05% NaN ₃ , 50% glycerol
Concentration:	lot specific
Purification:	Antigen affinity purification
Conjugation:	Unconjugated
Storage:	Store at -20°C as received.
Stability:	Stable for 12 months from date of receipt.
Predicted Protein Size:	46 kDa
Gene Name:	serpin family A member 5
Database Link:	NP_000615 Entrez Gene 5104 Human P05154



[View online »](#)

Background:

The protein encoded by this gene is a member of the serpin family of proteins; a group of proteins that inhibit serine proteases. This gene is one in a cluster of serpin genes located on the q arm of chromosome 14. This family member is a glycoprotein that can inhibit several serine proteases; including protein C and various plasminogen activators and kallikreins; and it thus plays diverse roles in hemostasis and thrombosis in multiple organs.

Synonyms:

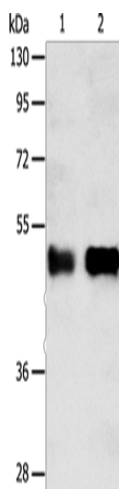
PAI-3; PAI3; PCI; PCI-B; PLANH3; PROCI

Protein Families:

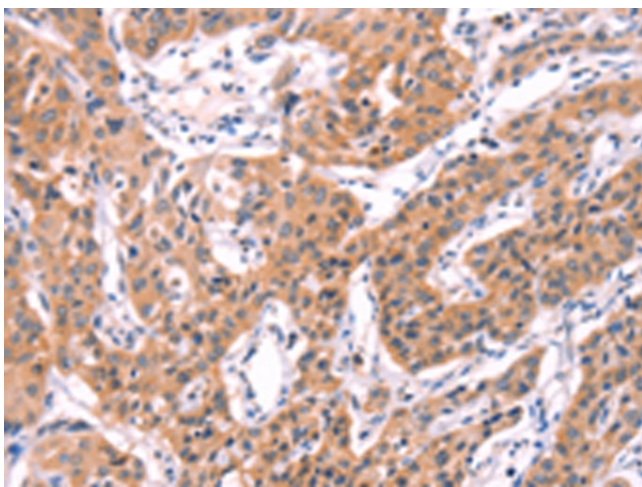
Druggable Genome, Secreted Protein

Protein Pathways:

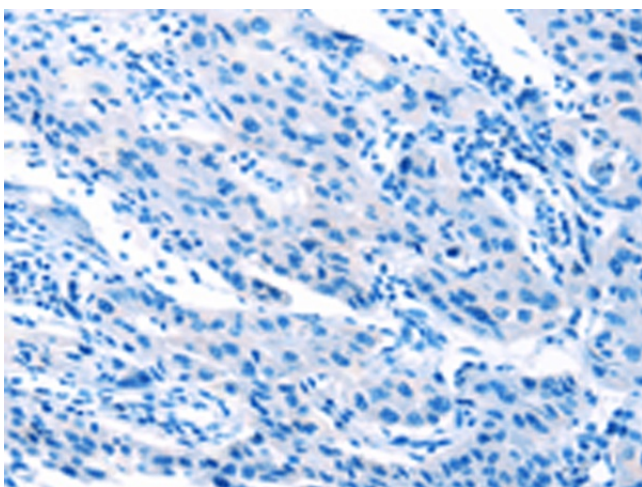
Complement and coagulation cascades

Product images:


Gel: 10%SDS-PAGE
 Lysate: 40 µg
 Lane 1-2: Human liver cancer tissue
 A549 cells
 Primary antibody: TA323610 (SERPINA5 Antibody)
 at dilution 1/750
 Secondary antibody: Goat anti rabbit IgG at
 1/8000 dilution
 Exposure time: 10 minutes



Immunohistochemistry of paraffin-embedded
 Human lung cancer tissue using TA323610
 (SERPINA5 Antibody) at dilution 1/40 (Original
 magnification: ×200)



Immunohistochemistry of paraffin-embedded Human lung cancer tissue using TA323610 (SERPINA5 Antibody) at dilution 1/40, treated with fusion protein. (Original magnification: ×200)