

## Product datasheet for **TA323604S**

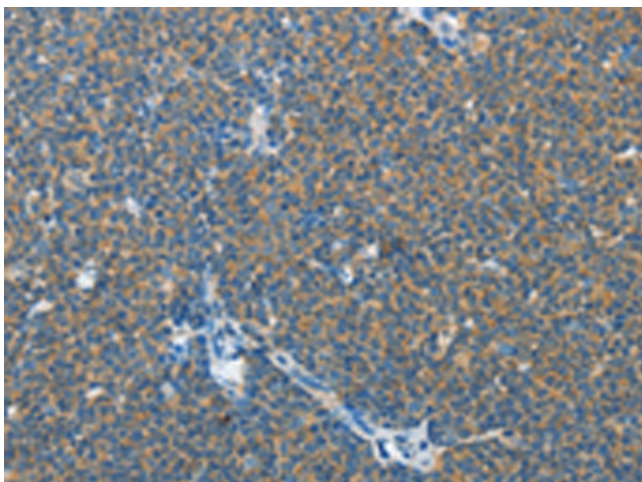
### IL13 receptor alpha 2 (IL13RA2) Rabbit Polyclonal Antibody

#### Product data:

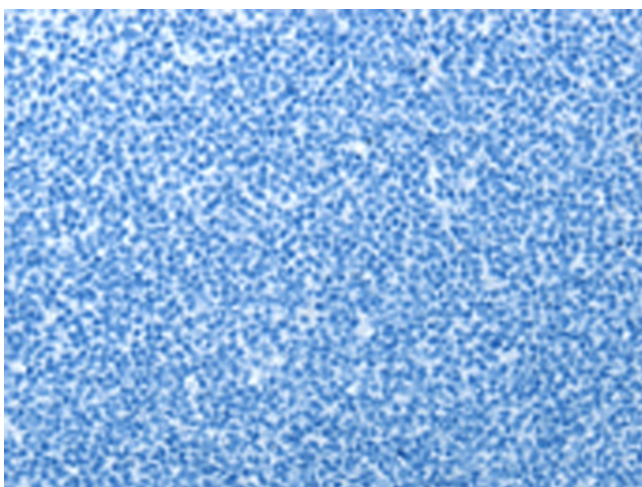
|                       |   |
|-----------------------|---|
| Product Type:         | Primary Antibodies  |
| Applications:         | IHC   |
| Recommended Dilution: | IHC: 25-100<br>Positive control: Human lymphoma<br>Predicted cell location: Cytoplasm   |
| Reactivity:           | Human   |
| Host:                 | Rabbit  |
| Isotype:              | IgG   |
| Clonality:            | Polyclonal  |
| Immunogen:            | Fusion protein corresponding to a region derived from 43-330 amino acids of human interleukin 13 receptor, alpha 2  |
| Formulation:          | PBS pH7.3, 0.05% NaN <sub>3</sub> , 50% glycerol  |
| Purification:         | Antigen affinity purification   |
| Conjugation:          | Unconjugated  |
| Storage:              | Store at -20°C as received.   |
| Stability:            | Stable for 12 months from date of receipt.  |
| Gene Name:            | interleukin 13 receptor subunit alpha 2   |
| Database Link:        | <a href="#">NP_000631</a><br><a href="#">Entrez Gene 3598 Human Q14627</a>  |
| Background:           | The protein encoded by this gene is closely related to IL13RA1, a subunit of the interleukin 13 receptor complex. This protein binds IL13 with high affinity, but lacks cytoplasmic domain, and does not appear to function as a signal mediator. It is reported to play a role in the internalization of IL13. |
| Synonyms:             | CD213A2; CT19; IL-13R; IL13BP   |
| Protein Families:     | Druggable Genome, Transmembrane   |
| Protein Pathways:     | Jak-STAT signaling pathway  |



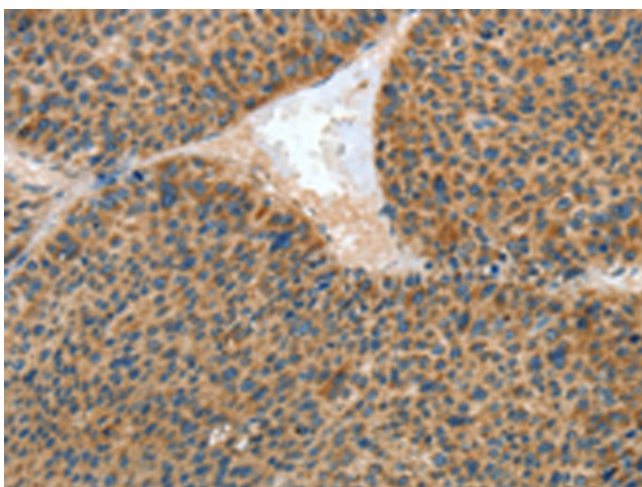
[View online »](#)

**Product images:**

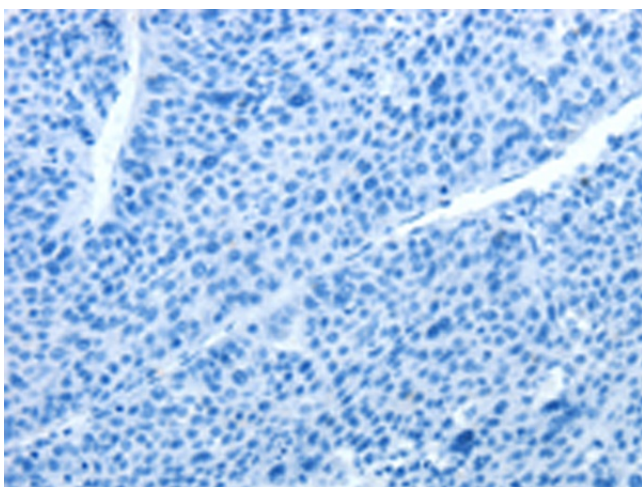
Immunohistochemistry of paraffin-embedded Human lymphoma tissue using [TA323604] (IL13RA2 Antibody) at dilution 1/25 (Original magnification:  $\times 200$ )



Immunohistochemistry of paraffin-embedded Human lymphoma tissue using [TA323604] (IL13RA2 Antibody) at dilution 1/25, treated with fusion protein. (Original magnification:  $\times 200$ )



Immunohistochemistry of paraffin-embedded Human liver cancer tissue using [TA323604] (IL13RA2 Antibody) at dilution 1/25 (Original magnification:  $\times 200$ )



Immunohistochemistry of paraffin-embedded Human liver cancer tissue using [TA323604] (IL13RA2 Antibody) at dilution 1/25, treated with fusion protein. (Original magnification:  $\times 200$ )