

Product datasheet for **TA323603S**

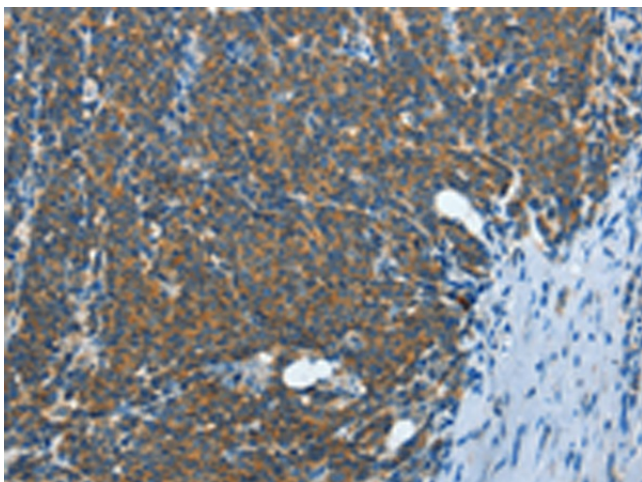
IL13 receptor alpha 2 (IL13RA2) Rabbit Polyclonal Antibody

Product data:

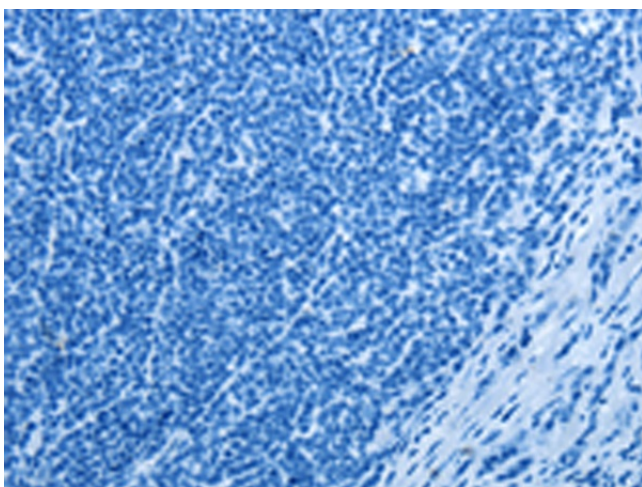
Product Type:	Primary Antibodies
Applications:	IHC
Recommended Dilution:	IHC: 15-50 Positive control: Human lymphoma Predicted cell location: Cytoplasm
Reactivity:	Human
Host:	Rabbit
Isotype:	IgG
Clonality:	Polyclonal
Immunogen:	Fusion protein corresponding to a region derived from 43-330 amino acids of human interleukin 13 receptor, alpha 2
Formulation:	PBS pH7.3, 0.05% NaN ₃ , 50% glycerol
Purification:	Antigen affinity purification
Conjugation:	Unconjugated
Storage:	Store at -20°C as received.
Stability:	Stable for 12 months from date of receipt.
Gene Name:	interleukin 13 receptor subunit alpha 2
Database Link:	NP_000631 Entrez Gene 3598 Human Q14627
Background:	The protein encoded by this gene is closely related to IL13RA1, a subunit of the interleukin 13 receptor complex. This protein binds IL13 with high affinity, but lacks cytoplasmic domain, and does not appear to function as a signal mediator. It is reported to play a role in the internalization of IL13.
Synonyms:	CD213A2; CT19; IL-13R; IL13BP
Protein Families:	Druggable Genome, Transmembrane
Protein Pathways:	Jak-STAT signaling pathway



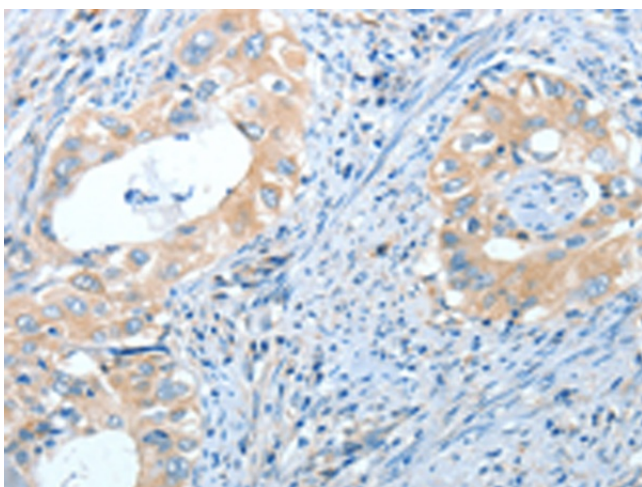
[View online »](#)

Product images:

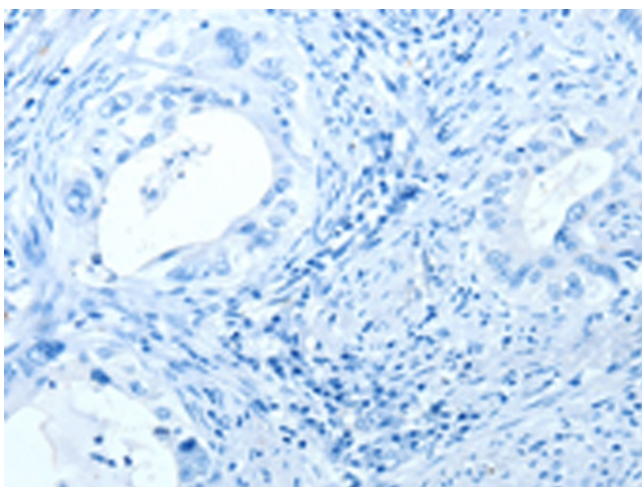
Immunohistochemistry of paraffin-embedded Human lymphoma tissue using [TA323603] (IL13RA2 Antibody) at dilution 1/30 (Original magnification: $\times 200$)



Immunohistochemistry of paraffin-embedded Human lymphoma tissue using [TA323603] (IL13RA2 Antibody) at dilution 1/30, treated with fusion protein. (Original magnification: $\times 200$)



Immunohistochemistry of paraffin-embedded Human cervical cancer tissue using [TA323603] (IL13RA2 Antibody) at dilution 1/30 (Original magnification: $\times 200$)



Immunohistochemistry of paraffin-embedded Human cervical cancer tissue using [TA323603] (IL13RA2 Antibody) at dilution 1/30, treated with fusion protein. (Original magnification: $\times 200$)