

Product datasheet for **TA323602**

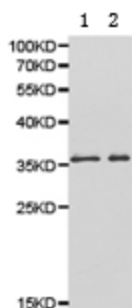
NAT1 Rabbit Polyclonal Antibody

Product data:

Product Type:	Primary Antibodies
Applications:	WB
Recommended Dilution:	WB: 1:500-2000
Reactivity:	Human, Mouse, Rat
Host:	Rabbit
Isotype:	IgG
Clonality:	Polyclonal
Immunogen:	Full length fusion protein
Formulation:	PBS pH7.3, 0.05% NaN ₃ , 50% glycerol
Concentration:	lot specific
Purification:	Antigen affinity purification
Conjugation:	Unconjugated
Storage:	Store at -20°C as received.
Stability:	Stable for 12 months from date of receipt.
Predicted Protein Size:	34 kDa
Gene Name:	N-acetyltransferase 1 (arylamine N-acetyltransferase)
Database Link:	NP_000653 Entrez Gene 17960 MouseEntrez Gene 116631 RatEntrez Gene 9 Human P18440
Background:	This gene is one of two arylamine N-acetyltransferase (NAT) genes in the human genome, and is orthologous to the mouse and rat Nat2 genes. The enzyme encoded by this gene catalyzes the transfer of an acetyl group from acetyl-CoA to various arylamine and hydrazine substrates. This enzyme helps metabolize drugs and other xenobiotics, and functions in folate catabolism. Multiple transcript variants encoding different isoforms have been found for this gene.
Synonyms:	AAC1; MNAT; NAT-1; NATI
Protein Pathways:	Caffeine metabolism, Drug metabolism - other enzymes, Metabolic pathways



[View online »](#)

Product images:

Predicted band size: 34 kDa. Positive control: A431 and HeLa cell lysate. Recommended dilution: 1/500-2000. (Gel: 10%SDS-PAGE Lane 1: A431 cell lysate Lane 2: HeLa cell lysate Lysates: 40 ug per lane Primary antibody: 1/500 dilution Secondary antibody: Goat anti Rabbit IgG - H&L (HRP) at 1/10000 dilution Exposure time: 1 minute)